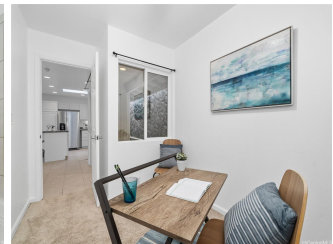


2011 Puowaina Drive, Honolulu 96813 * \$1,250,000 * Originally \$1,350,000

Beds: 4	MLS#: 202323609 , FS	Year Built: 1997
Bath: 2/1	Status: Active	Remodeled: 2019
Living Sq. Ft.: 1,802	List Date & DOM: 11-13-2023 & 178	Total Parking: 4
Land Sq. Ft.: 7,790	Condition: Excellent	Assessed Value
Lanai Sq. Ft.: 0	Frontage: Preservation	Building: \$327,400
Sq. Ft. Other: 166	Tax/Year: \$425/2023	Land: \$769,200
Total Sq. Ft. 1,968	Neighborhood: Punchbowl Area	Total: \$1,096,600
Maint./Assoc. \$0 / \$0	Flood Zone : Zone X - Tool	Stories / CPR: Three+ / No
Parking: 3 Car+, Driveway, Garage, Street	Frontage: Preservation	
Zoning : 05 - R-5 Residential District	View: Cemetery, City, Mountain, Other	

Public Remarks: Big price reduction!! Enjoy convenience and tranquility in your new 4-bdrm 2.5-bath perimeter home located on the quiet side of Punchbowl. This home was built in 1997 and has been well maintained and upgraded over the years. The 625 SF 2-car garage and storage space are on the ground level along with a 2-car driveway and additional street parking. There are 2 large bedrooms with valley views and a full bath on the second level. The third level features the living room with warm engineered hardwood flooring and cool plantation shutters, kitchen with granite counters and newer appliances, spacious primary suite with vaulted ceilings, and the fourth bedroom that can also be used as an office or den. The third level also includes a very private lanai off the kitchen and a 125 SF covered lanai off the living room with great indoor/outdoor living space and views of Nuuanu Valley, mountains, and city lights. All the way up top, there are solar water panels. Convenient access to bus stops and freeways with just a short drive to Honolulu central business district, schools, hospitals, shopping, dining, and entertainment. **Sale Conditions:** None **Schools:** [Pauoa](#), [Kawananakoa](#), [Roosevelt](#) * [Request Showing](#), [Photos](#), [History](#), [Maps](#), [Deed](#), [Watch List](#), [Tax Info](#)





Address	Price	Bd & Bth	Living / Avg.	Land Avg.	DOM
2011 Puowaina Drive	\$1,250,000	4 & 2/1	1,802 \$694	7,790 \$160	178

Address	Tax Maint. Ass.	Assessed Land	Assessed Building	Assessed Total	Ratio	Year & Remodeled
2011 Puowaina Drive	\$425 \$0 \$0	\$769,200	\$327,400	\$1,096,600	114%	1997 & 2019

[2011 Puowaina Drive](#) - MLS#: [202323609](#) - Original price was \$1,350,000 - Big price reduction!! Enjoy convenience and tranquility in your new 4-bdrm 2.5-bath perimeter home located on the quiet side of Punchbowl. This home was built in 1997 and has been well maintained and upgraded over the years. The 625 SF 2-car garage and storage space are on the ground level along with a 2-car driveway and additional street parking. There are 2 large bedrooms with valley views and a full bath on the second level. The third level features the living room with warm engineered hardwood flooring and cool plantation shutters, kitchen with granite counters and newer appliances, spacious primary suite with vaulted ceilings, and the fourth bedroom that can also be used as an office or den. The third level also includes a very private lanai off the kitchen and a 125 SF covered lanai off the living room with great indoor/outdoor living space and views of Nuuanu Valley, mountains, and city lights. All the way up top, there are solar water panels. Convenient access to bus stops and freeways with just a short drive to Honolulu central business district, schools, hospitals, shopping, dining, and entertainment. **Region:** Metro **Neighborhood:** Punchbowl Area **Condition:** Excellent **Parking:** 3 Car+, Driveway, Garage, Street **Total Parking:** 4 **View:** Cemetery, City, Mountain, Other **Frontage:** Preservation **Pool:** None **Zoning:** 05 - R-5 Residential District **Sale Conditions:** None **Schools:** [Pauoa](#), [Kawananakoa](#), [Roosevelt](#) * [Request Showing](#), [Photos](#), [History](#), [Maps](#), [Deed](#), [Watch List](#), [Tax Info](#)

DOM = Days on Market