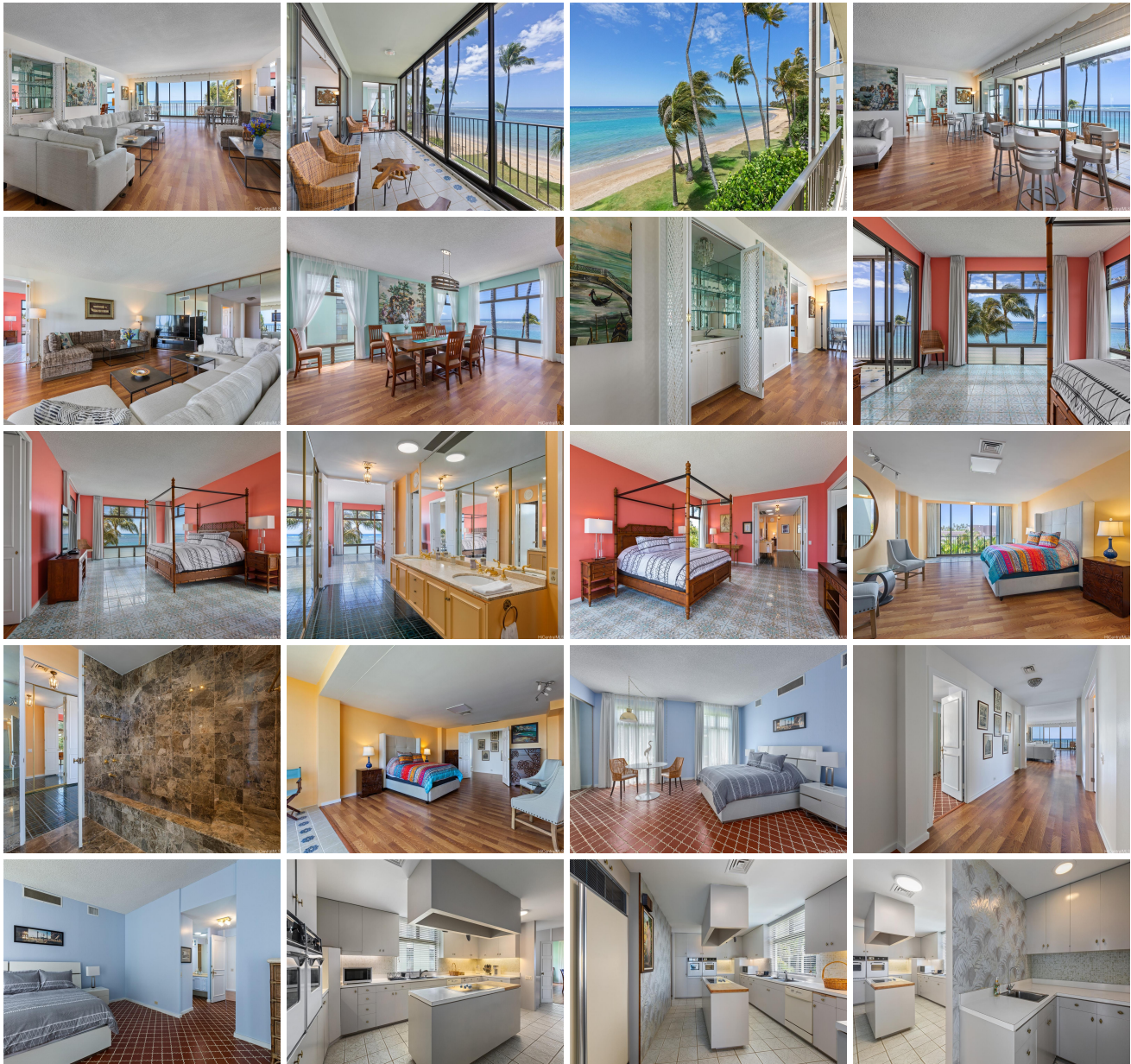
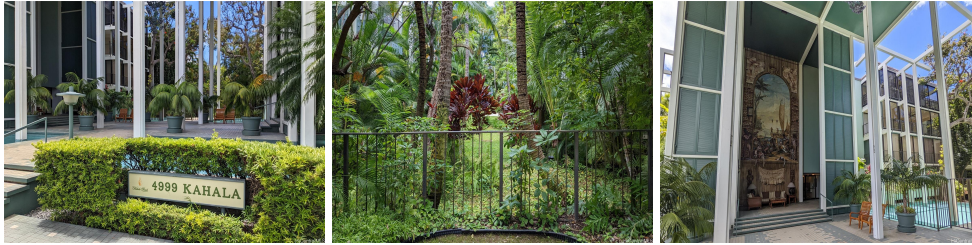


**Kahala Beach 4999 Kahala Avenue Unit 212, Honolulu 96816 \* \$300,000 \* Originally \$470,000**

Beds: <b>3</b>	MLS#: <b><u>202323805</u>, LH</b>	Year Built: <b>1966</b>
Bath: <b>2/1</b>	Status: <b>Active</b>	Remodeled:
Living Sq. Ft.: <b>3,450</b>	List Date & DOM: <b>10-13-2023 &amp; 217</b>	Total Parking: <b>2</b>
Land Sq. Ft.: <b>291,024</b>	Condition: <b>Excellent</b>	<a href="#">Assessed Value</a>
Lanai Sq. Ft.: <b>60</b>	Frontage: <b>Ocean, Sandy Beach</b>	Building: <b>\$3,359,900</b>
Sq. Ft. Other: <b>0</b>	Tax/Year: <b>\$3,781/2023</b>	Land: <b>\$1,269,400</b>
Total Sq. Ft. <b>3,510</b>	Neighborhood: <b>Waialae G-c</b>	Total: <b>\$4,629,300</b>
Maint./Assoc. <b>\$3,306 / \$0</b>	<a href="#">Flood Zone</a> : <b>Zone X - Tool</b>	Stories / CPR: <b>One / No</b>
Parking: <b>Assigned, Covered - 1</b>	Frontage: <b>Ocean, Sandy Beach</b>	
<a href="#">Zoning</a> : <b>12 - A-2 Medium Density Apartme</b>	View: <b>Ocean</b>	

**Public Remarks:** Right on the stunning Kahala Beach, the epitome of luxury living on Oahu - Kahala Beach Condominium is a LEASEHOLD property, lease is up in July 2027. This extraordinary three bedrooms and two and a half bathrooms, offering an expansive 3,450 square feet of coastal elegance. At every turn, be captivated by breathtaking ocean views that create an awe-inspiring atmosphere. Conveniently situated near Kahala Mall and next to the Waialae Country Club, you can immerse yourself in the beauty of stunning vistas from your very own private lanai. The seamless blend of contemporary design and island ambiance is showcased through the kitchen, a grand dining area, and a lavishly appointed primary suite. While indulging in this coastal paradise, take advantage of the exquisite amenities including a pool, fitness center, and 24-hour security. Don't miss this unparalleled opportunity to own a slice of this paradise. Schedule a showing today and embark on a journey to experience true Island living at its finest. **Sale Conditions:** None **Schools:** , , \* [Request Showing](#), [Photos](#), [History](#), [Maps](#), [Deed](#), [Watch List](#), [Tax Info](#)





Address	Price	Bd & Bth	Living / Avg.	Land   Avg.	DOM
<a href="#">4999 Kahala Avenue 212</a>	<b>\$300,000 LH</b>	3 & 2/1	3,450   \$87	291,024   \$1	217

Address	Tax   Maint.   Ass.	Assessed Land	Assessed Building	Assessed Total	Ratio	Year & Remodeled
<a href="#">4999 Kahala Avenue 212</a>	\$3,781   \$3,306   \$0	\$1,269,400	\$3,359,900	\$4,629,300	6%	1966 & NA

[4999 Kahala Avenue 212](#) - MLS#: [202323805](#) - Original price was \$470,000 - Right on the stunning Kahala beach, the epitome of luxury living on Oahu - Kahala Beach Condominium is a LEASEHOLD property, lease is up in July 2027. This extraordinary three bedrooms and two and a half bathrooms, offering an expansive 3,450 square feet of coastal elegance. At every turn, be captivated by breathtaking ocean views that create an awe-inspiring atmosphere. Conveniently situated near Kahala Mall and next to the Waialae Country Club, you can immerse yourself in the beauty of stunning vistas from your very own private lanai. The seamless blend of contemporary design and island ambiance is showcased through the kitchen, a grand dining area, and a lavishly appointed primary suite. While indulging in this coastal paradise, take advantage of the exquisite amenities including a pool, fitness center, and 24-hour security. Don't miss this unparalleled opportunity to own a slice of this paradise. Schedule a showing today and embark on a journey to experience true Island living at its finest.

**Region:** Diamond Head **Neighborhood:** Waialae G-c **Condition:** Excellent **Parking:** Assigned, Covered - 1 **Total Parking:** 2 **View:** Ocean **Frontage:** Ocean,Sandy Beach **Pool:** **Zoning:** 12 - A-2 Medium Density Apartme **Sale Conditions:** None

**Schools:** , , \* [Request Showing](#), [Photos](#), [History](#), [Maps](#), [Deed](#), [Watch List](#), [Tax Info](#)

DOM = Days on Market