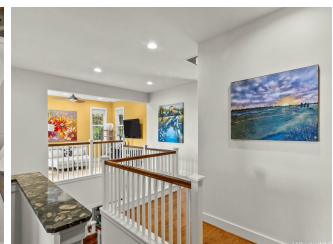
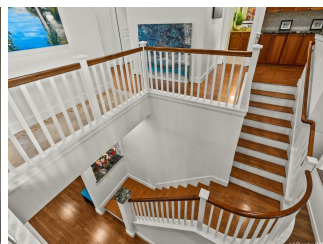
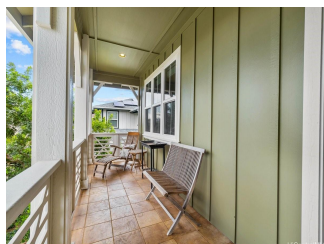
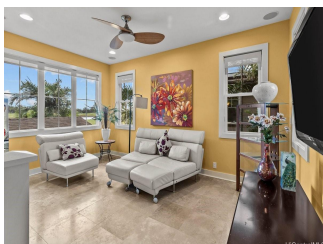
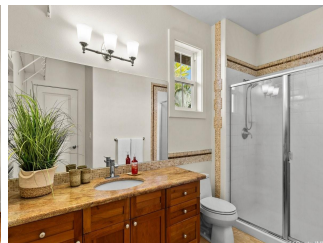
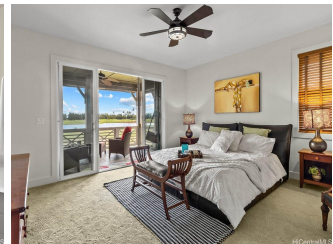
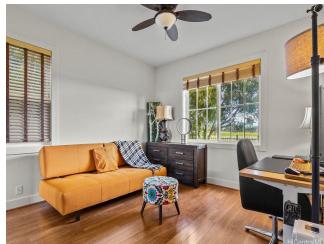
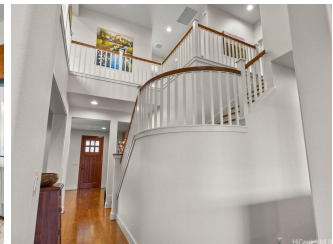
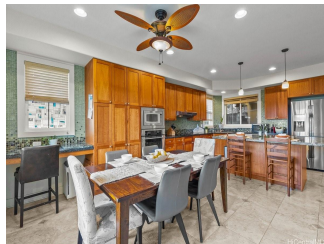


91-1239 Kuanoo Street, Ewa Beach 96706 * \$1,625,000

Beds: 4	MLS#: 202324279, FS	Year Built: 2007
Bath: 3/0	Status: Active	Remodeled:
Living Sq. Ft.: 3,080	List Date & DOM: 03-19-2024 & 50	Total Parking: 4
Land Sq. Ft.: 5,056	Condition: Excellent	Assessed Value
Lanai Sq. Ft.: 346	Frontage: Golf Course	Building: \$498,300
Sq. Ft. Other: 0	Tax/Year: \$389/2023	Land: \$1,035,200
Total Sq. Ft. 3,426	Neighborhood: Ewa Gen Haleakea	Total: \$1,533,500
Maint./Assoc. \$0 / \$50	Flood Zone : Zone D - Tool	Stories / CPR: One / No
Parking: 2 Car, Driveway, Garage, Street	Frontage: Golf Course	
Zoning : 05 - R-5 Residential District	View: Golf Course, Mountain, Sunset	

Public Remarks: VIEW of Prince Golf Course! This well maintained home at Haleakea in Ewa Beach, has approximately 3,080 sqft. of living area on a 5,056 sqft. lot, with 4 bedrooms, 3 bathrooms, and 22 owned solar panels on Net metering. The primary bedroom suite being a private oasis featuring a luxurious en-suite bathroom, large walk-in closet and a covered private balcony where you can enjoy your morning coffee and sunset while taking the panoramic views of the lush green fairways. The open living room/loft area upstairs is filled with natural light making it a cozy space to relax and work. A BED and BATH on the 1st floor for your convenience. The open concept gourmet kitchen with a large island perfect to entertain. Upgrades include NEW central AC, NEW interior paint, newly landscaped yard, solar water, dual pane windows, granite countertops, mosaic backsplash, and water filtration. A front porch and covered backyard lanai perfect for BBQ and entertaining. Conveniently located near Laulani Shopping Center, Ka Makana Alii Mall, Queens Hospital, and more. **Sale Conditions:** None **Schools:** [Pohakea](#), [Ilima](#), [Campbell](#) * [Request Showing](#), [Photos](#), [History](#), [Maps](#), [Deed](#), [Watch List](#), [Tax Info](#)





Address	Price	Bd & Bth	Living / Avg.	Land Avg.	DOM
91-1239 Kuanoo Street	\$1,625,000	4 & 3/0	3,080 \$528	5,056 \$321	50

Address	Tax Maint. Ass.	Assessed Land	Assessed Building	Assessed Total	Ratio	Year & Remodeled
91-1239 Kuanoo Street	\$389 \$0 \$50	\$1,035,200	\$498,300	\$1,533,500	106%	2007 & NA

[91-1239 Kuanoo Street](#) - MLS#: [202324279](#) - VIEW of Prince Golf Course! This well maintained home at Haleakea in Ewa Beach, has approximately 3,080 sqft. of living area on a 5,056 sqft. lot, with 4 bedrooms, 3 bathrooms, and 22 owned solar panels on Net metering. The primary bedroom suite being a private oasis featuring a luxurious en-suite bathroom, large walk-in closet and a covered private balcony where you can enjoy your morning coffee and sunset while taking the panoramic views of the lush green fairways. The open living room/loft area upstairs is filled with natural light making it a cozy space to relax and work. A BED and BATH on the 1st floor for your convenience. The open concept gourmet kitchen with a large island perfect to entertain. Upgrades include NEW central AC, NEW interior paint, newly landscaped yard, solar water, dual pane windows, granite countertops, mosaic backsplash, and water filtration. A front porch and covered backyard lanai perfect for BBQ and entertaining. Conveniently located near Laulani Shopping Center, Ka Makana Alii Mall, Queens Hospital, and more. **Region:** Ewa Plain **Neighborhood:** Ewa Gen Haleakea **Condition:** Excellent **Parking:** 2 Car, Driveway, Garage, Street **Total Parking:** 4 **View:** Golf Course, Mountain, Sunset **Frontage:** Golf Course **Pool:** None, Community Association Pool **Zoning:** 05 - R-5 Residential District **Sale Conditions:** None **Schools:** [Pohakea](#), [Ilima](#), [Campbell](#) * [Request Showing](#), [Photos](#), [History](#), [Maps](#), [Deed](#), [Watch List](#), [Tax Info](#)

DOM = Days on Market