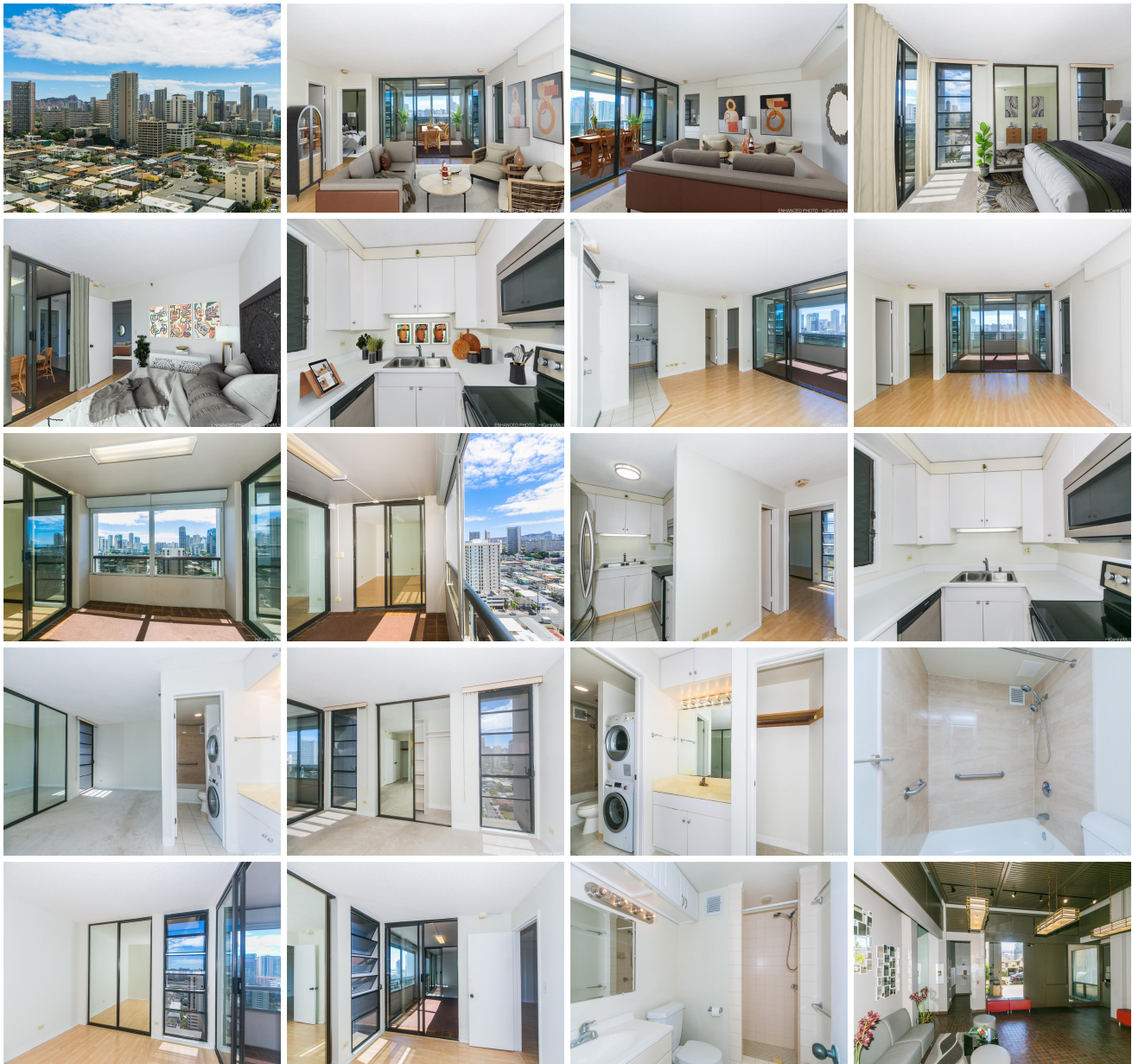


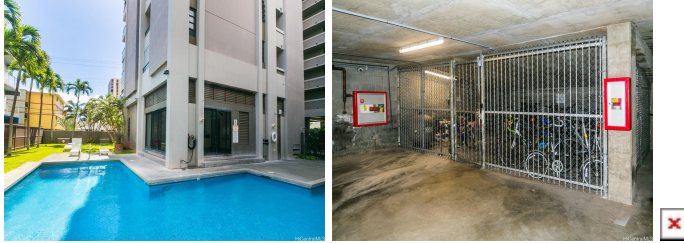
Twenty One Hundred 2100 Date Street Unit 1905, Honolulu 96826 * \$529,000 * Originally

\$579,000

Beds: 2	MLS#: <u>202324394</u>, FS	Year Built: 1980
Bath: 2/0	Status: Active	Remodeled:
Living Sq. Ft.: 778	List Date & DOM: 10-24-2023 & 206	Total Parking: 1
Land Sq. Ft.: 0	Condition: Average	Assessed Value
Lanai Sq. Ft.: 0	Frontage:	Building: \$449,000
Sq. Ft. Other: 0	Tax/Year: \$485/2023	Land: \$68,300
Total Sq. Ft. 778	Neighborhood: Moiliili	Total: \$517,200
Maint./Assoc. \$1,031 / \$0	Flood Zone : Zone AO - Tool	Stories / CPR: / No
Parking: Covered - 1	Frontage:	
Zoning : 12 - A-2 Medium Density Apartme	View: City	

Public Remarks: This stunning condominium offers breathtaking views of Diamond Head, Waikiki, and the marina. Featuring two bedrooms and two bathrooms, this unit also includes a reserved covered parking space. This move-in-ready condo is ready for you to add your own personal touches to make this space your own. The condo boasts a generous lanai equipped with powered shutters, ensuring protection from the elements. Its convenient location provides easy access to Moiliili's vibrant establishments and the renowned attractions, beaches, shops, and restaurants of Waikiki. Situated within the secure TWENTY-ONE HUNDRED building, residents enjoy peace of mind with gated garage access and video monitoring, as well as a resident manager. Residents of this building can take advantage of various amenities, including barbecue facilities, a swimming pool, and a versatile meeting/recreation room. **Sale Conditions:** None **Schools:** , , * [Request Showing](#), [Photos](#), [History](#), [Maps](#), [Deed](#), [Watch List](#), [Tax Info](#)





Address	Price	Bd & Bth	Living / Avg.	Land Avg.	DOM
2100 Date Street 1905	\$529,000	2 & 2/0	778 \$680	0 \$inf	206

Address	Tax Maint. Ass.	Assessed Land	Assessed Building	Assessed Total	Ratio	Year & Remodeled
2100 Date Street 1905	\$485 \$1,031 \$0	\$68,300	\$449,000	\$517,200	102%	1980 & NA

[2100 Date Street 1905](#) - MLS#: [202324394](#) - Original price was \$579,000 - This stunning condominium offers breathtaking views of Diamond Head, Waikiki, and the marina. Featuring two bedrooms and two bathrooms, this unit also includes a reserved covered parking space. This move-in-ready condo is ready for you to add your own personal touches to make this space your own. The condo boasts a generous lanai equipped with powered shutters, ensuring protection from the elements. Its convenient location provides easy access to Moiliili's vibrant establishments and the renowned attractions, beaches, shops, and restaurants of Waikiki. Situated within the secure TWENTY-ONE HUNDRED building, residents enjoy peace of mind with gated garage access and video monitoring, as well as a resident manager. Residents of this building can take advantage of various amenities, including barbecue facilities, a swimming pool, and a versatile meeting/recreation room.

Region: Metro **Neighborhood:** Moiliili **Condition:** Average **Parking:** Covered - 1 **Total Parking:** 1 **View:** City **Frontage:** **Pool:** **Zoning:** 12 - A-2 Medium Density Apartme **Sale Conditions:** None **Schools:** , , * [Request Showing](#), [Photos](#), [History](#), [Maps](#), [Deed](#), [Watch List](#), [Tax Info](#)

DOM = Days on Market