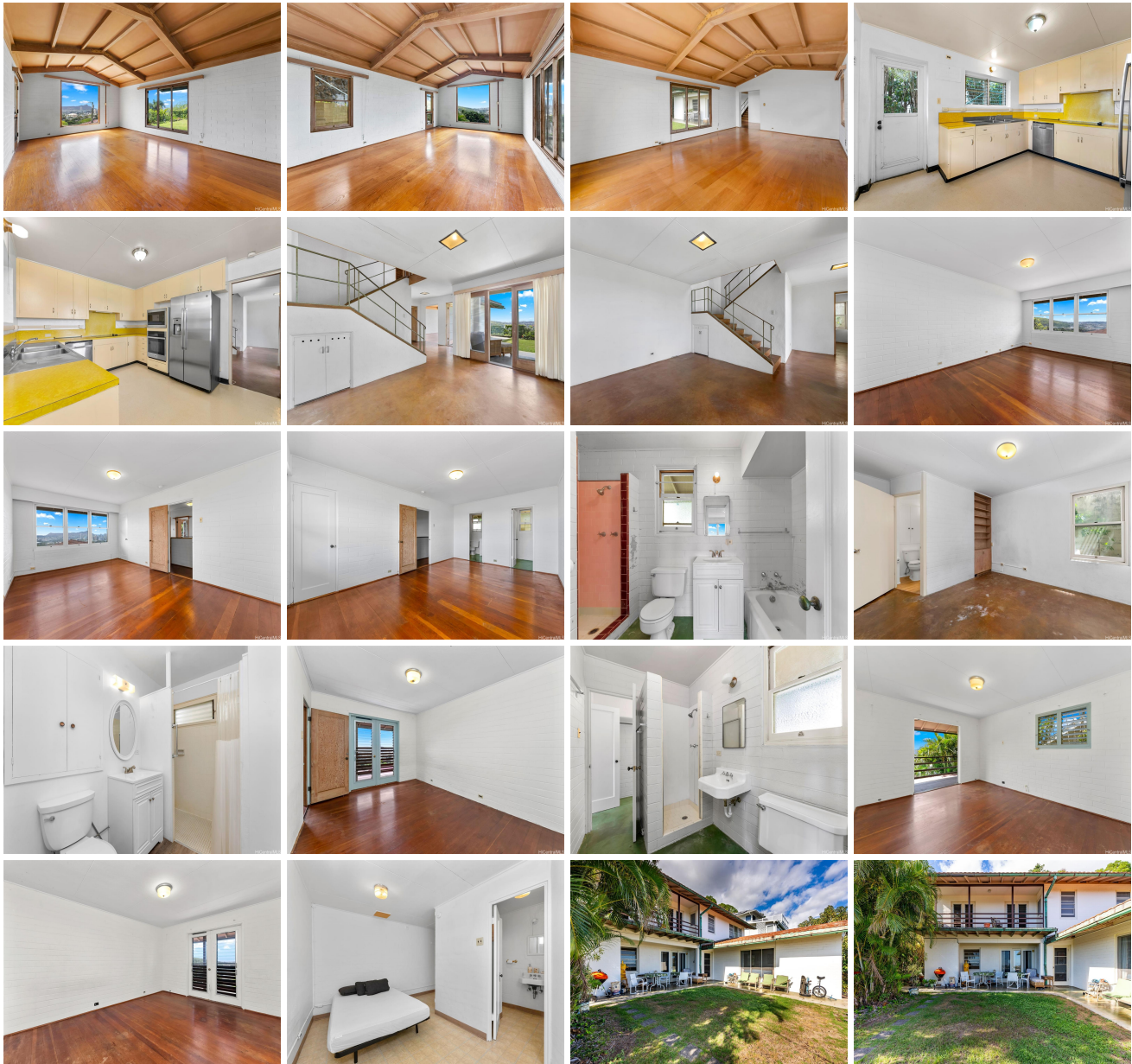
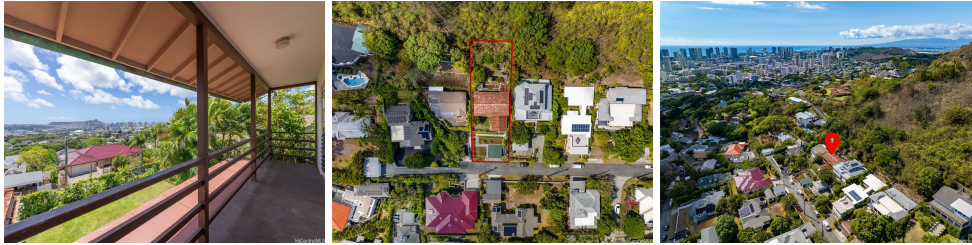


2326 Sonoma Street, Honolulu 96822 * \$2,280,000 * Originally \$2,400,000

Beds: 5	MLS#: 202324407, FS	Year Built: 1948
Bath: 4/0	Status: Active	Remodeled:
Living Sq. Ft.: 1,981	List Date & DOM: 11-03-2023 & 190	Total Parking: 2
Land Sq. Ft.: 10,200	Condition: Above Average	Assessed Value
Lanai Sq. Ft.: 88	Frontage:	Building: \$269,900
Sq. Ft. Other: 0	Tax/Year: \$25/2024	Land: \$1,969,800
Total Sq. Ft. 2,069	Neighborhood: Manoa Area	Total: \$2,239,700
Maint./Assoc. \$0 / \$0	Flood Zone : Zone X - Tool	Stories / CPR: Basement, Two / No
Parking: 2 Car, Carport, Street	Frontage:	
Zoning : 03 - R10 - Residential District	View: City, Diamond Head, Mountain, Ocean	

Public Remarks: Enjoy breathtaking Diamond Head, ocean and city views from this 5 bdrm/4 bath home, incl. a BONUS 1 bdrm/1 bath with its own SEPARATE ENTRY, in the highly coveted Manoa neighborhood. Situated on an expansive 10,200 sq. ft. lot, this classic mid-century style historic residence was designed by renowned Hawaii architect Ted Vierra. With almost 2,000 sq. ft. of interior living space, this home features vaulted open beam ceilings in the living room, spacious kitchen with stainless steel appliances, and a nice open yard space where you can entertain family and guests. Relax on your covered lanai as you soak in the stunning views. Ideally located just minutes from some of Hawaii's best schools, parks, shopping and restaurants. Must see to appreciate! **Sale Conditions:** None **Schools:** [Noelani](#), [Stevenson](#), [Roosevelt](#) * [Request Showing](#), [Photos](#), [History](#), [Maps](#), [Deed](#), [Watch List](#), [Tax Info](#)





Address	Price	Bd & Bth	Living / Avg.	Land Avg.	DOM
2326 Sonoma Street	\$2,280,000	5 & 4/0	1,981 \$1,151	10,200 \$224	190

Address	Tax Maint. Ass.	Assessed Land	Assessed Building	Assessed Total	Ratio	Year & Remodeled
2326 Sonoma Street	\$25 \$0 \$0	\$1,969,800	\$269,900	\$2,239,700	102%	1948 & NA

[2326 Sonoma Street](#) - MLS#: [202324407](#) - Original price was \$2,400,000 - Enjoy breathtaking Diamond Head, ocean and city views from this 5 bdrm/4 bath home, incl. a BONUS 1 bdrm/1 bath with its own SEPARATE ENTRY, in the highly coveted Manoa neighborhood. Situated on an expansive 10,200 sq. ft. lot, this classic mid-century style historic residence was designed by renowned Hawaii architect Ted Vierra. With almost 2,000 sq. ft. of interior living space, this home features vaulted open beam ceilings in the living room, spacious kitchen with stainless steel appliances, and a nice open yard space where you can entertain family and guests. Relax on your covered lanai as you soak in the stunning views. Ideally located just minutes from some of Hawaii's best schools, parks, shopping and restaurants. Must see to appreciate! **Region:** Metro **Neighborhood:** Manoa Area **Condition:** Above Average **Parking:** 2 Car, Carport, Street **Total Parking:** 2 **View:** City, Diamond Head, Mountain, Ocean **Frontage:** **Pool:** None **Zoning:** 03 - R10 - Residential District **Sale Conditions:** None **Schools:** [Noelani](#), [Stevenson](#), [Roosevelt](#) * [Request Showing](#), [Photos](#), [History](#), [Maps](#), [Deed](#), [Watch List](#), [Tax Info](#)

DOM = Days on Market