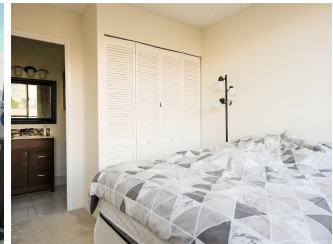
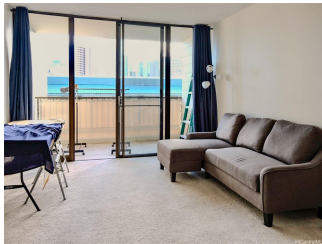


Hausten 739 Hausten Street Unit 304, Honolulu 96826 * \$379,000 * Originally \$399,000

Beds: 1	MLS#: 202324819, FS	Year Built: 1975
Bath: 1/0	Status: Active	Remodeled:
Living Sq. Ft.: 615	List Date & DOM: 11-01-2023 & 207	Total Parking: 1
Land Sq. Ft.: 14,375	Condition: Above Average	Assessed Value
Lanai Sq. Ft.: 0	Frontage:	Building: \$360,400
Sq. Ft. Other: 0	Tax/Year: \$114/2023	Land: \$29,900
Total Sq. Ft. 615	Neighborhood: Moiliili	Total: \$390,300
Maint./Assoc. \$710 / \$0	Flood Zone : Zone X - Tool	Stories / CPR: Split Level / No
Parking: Covered - 1, Guest, Street	Frontage:	
Zoning : 12 - A-2 Medium Density Apartme	View: City, Mountain	

Public Remarks: PRICE REDUCTION!! Discover a unique living experience at The Hausten in the heart of Moiliili! This split-level condo, situated in a secure, pet-friendly building, offers a spacious living area and an open kitchen on the main level, with the bedroom and bathroom upstairs providing a private retreat. Enjoy the lanai for relaxation, and the convenience of an in-unit washer/dryer and one covered parking stall. Conveniently located near the University of Hawaii at Manoa, Waikiki, Ala Moana Mall, eateries, and with easy freeway access. Don't miss this unique opportunity! Unit is sold AS IS. **Sale Conditions:** None **Schools:** , , * [Request Showing](#), [Photos](#), [History](#), [Maps](#), [Deed](#), [Watch List](#), [Tax Info](#)



Address	Price	Bd & Bth	Living / Avg.	Land Avg.	DOM
739 Hausten Street 304	\$379,000	1 & 1/0	615 \$616	14,375 \$26	207

Address	Tax Maint. Ass.	Assessed Land	Assessed Building	Assessed Total	Ratio	Year & Remodeled
739 Hausten Street 304	\$114 \$710 \$0	\$29,900	\$360,400	\$390,300	97%	1975 & NA

[739 Hausten Street 304](#) - MLS#: [202324819](#) - Original price was \$399,000 - PRICE REDUCTION!! Discover a unique living experience at The Hausten in the heart of Moiliili! This split-level condo, situated in a secure, pet-friendly building, offers a spacious living area and an open kitchen on the main level, with the bedroom and bathroom upstairs providing a private retreat. Enjoy the lanai for relaxation, and the convenience of an in-unit washer/dryer and one covered parking stall. Conveniently located near the University of Hawaii at Manoa, Waikiki, Ala Moana Mall, eateries, and with easy freeway access. Don't miss this unique opportunity! Unit is sold AS IS. **Region:** Metro **Neighborhood:** Moiliili **Condition:** Above Average **Parking:** Covered - 1, Guest, Street **Total Parking:** 1 **View:** City, Mountain **Frontage:** Pool: **Zoning:** 12 - A-2 Medium Density Apartme **Sale Conditions:** None **Schools:** , , * [Request Showing](#), [Photos](#), [History](#), [Maps](#), [Deed](#), [Watch List](#), [Tax Info](#)

DOM = Days on Market