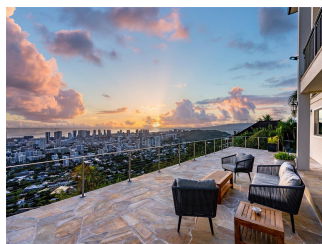
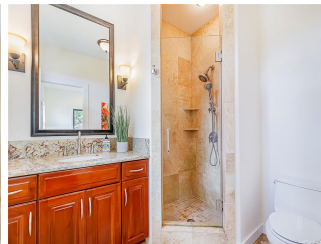
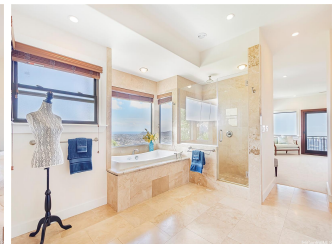


2835 Round Top Drive, Honolulu 96822 * \$7,888,000

Beds: 5	MLS#: 202326343, FS	Year Built: 2009
Bath: 6/0	Status: Active	Remodeled:
Living Sq. Ft.: 6,269	List Date & DOM: 12-13-2023 & 151	Total Parking: 7
Land Sq. Ft.: 30,128	Condition: Excellent	Assessed Value
Lanai Sq. Ft.: 1,293	Frontage:	Building: \$2,151,000
Sq. Ft. Other: 531	Tax/Year: \$1,738/2024	Land: \$3,774,000
Total Sq. Ft. 8,093	Neighborhood: Makiki Heights	Total: \$5,925,000
Maint./Assoc. \$0 / \$0	Flood Zone : Zone X - Tool	Stories / CPR: Three+ / No
Parking: 3 Car+, Driveway, Garage	Frontage:	
Zoning : 03 - R10 - Residential District	View: City, Coastline, Diamond Head, Mountain, Ocean	

Public Remarks: ENVIRONMENTALLY SUSTAINABLE LUXURY LIVING at its best with breathtaking unobstructed panoramic views of the from Diamond Head to the Waianae Mountain Range including the Honolulu City Skyline, the blue Pacific Ocean and romantic sunsets. Take your home off the grid or stay connected. The Hawaii home of the couple that made TETRIS a global phenomenon. This 6,269 sq ft executive style retreat features an innovative photovoltaic system with 99 owned PV panels producing 30 kW of power; LFP batteries providing 90 kWh of energy storage; and a solar water heating system. Situated on an over 30,000 sq ft rim lot, this property features tropical fruit trees, catchment watering system, and land space for maximum privacy. This exquisitely maintained 5 bedroom + 6 bath home boasts refined interior living spaces include travertine and engineered hardwood floors, a gracious open floorplan, a generous primary suite, and expansive open and covered lanais ideal for entertaining and soaking in the views. Must see to appreciate! **Sale Conditions:** None **Schools:** [Lincoln](#), [Stevenson](#), [Roosevelt](#) * [Request Showing](#), [Photos](#), [History](#), [Maps](#), [Deed](#), [Watch List](#), [Tax Info](#)





Address	Price	Bd & Bth	Living / Avg.	Land Avg.	DOM
2835 Round Top Drive	\$7,888,000	5 & 6/0	6,269 \$1,258	30,128 \$262	151

Address	Tax Maint. Ass.	Assessed Land	Assessed Building	Assessed Total	Ratio	Year & Remodeled
2835 Round Top Drive	\$1,738 \$0 \$0	\$3,774,000	\$2,151,000	\$5,925,000	133%	2009 & NA

[2835 Round Top Drive](#) - MLS#: [202326343](#) - ENVIRONMENTALLY SUSTAINABLE LUXURY LIVING at its best with breathtaking unobstructed panoramic views of the from Diamond Head to the Waianae Mountain Range including the Honolulu City Skyline, the blue Pacific Ocean and romantic sunsets. Take your home off the grid or stay connected. The Hawaii home of the couple that made TETRIS a global phenomenon. This 6,269 sq ft executive style retreat features an innovative photovoltaic system with 99 owned PV panels producing 30 kW of power; LFP batteries providing 90 kWh of energy storage; and a solar water heating system. Situated on an over 30,000 sq ft rim lot, this property features tropical fruit trees, catchment watering system, and land space for maximum privacy. This exquisitely maintained 5 bedroom + 6 bath home boasts refined interior living spaces include travertine and engineered hardwood floors, a gracious open floorplan, a generous primary suite, and expansive open and covered lanais ideal for entertaining and soaking in the views. Must see to appreciate! **Region:** Metro **Neighborhood:** Makiki Heights **Condition:** Excellent **Parking:** 3 Car+, Driveway, Garage **Total Parking:** 7 **View:** City, Coastline, Diamond Head, Mountain, Ocean **Frontage:** **Pool:** Spa/HotTub **Zoning:** 03 - R10 - Residential District **Sale Conditions:** None **Schools:** [Lincoln](#), [Stevenson](#), [Roosevelt](#) * [Request Showing](#), [Photos](#), [History](#), [Maps](#), [Deed](#), [Watch List](#), [Tax Info](#)

DOM = Days on Market