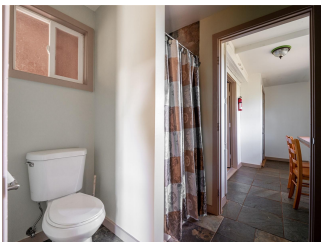


**65-340 Poamoho Place, Waialua 96791 \* \$4,150,000 \* Originally \$4,350,000**

Beds: <b>3</b>	MLS#: <b>202326465, FS</b>	Year Built: <b>2011</b>
Bath: <b>3/0</b>	Status: <b>Active</b>	Remodeled:
Living Sq. Ft.: <b>2,255</b>	List Date & DOM: <b>12-06-2023 &amp; 157</b>	Total Parking: <b>6</b>
Land Sq. Ft.: <b>217,886</b>	Condition: <b>Excellent</b>	<a href="#">Assessed Value</a>
Lanai Sq. Ft.: <b>1,718</b>	Frontage: <b>Other</b>	Building: <b>\$486,200</b>
Sq. Ft. Other: <b>0</b>	Tax/Year: <b>\$168/2023</b>	Land: <b>\$309,700</b>
Total Sq. Ft. <b>3,973</b>	Neighborhood: <b>Waialua</b>	Total: <b>\$795,900</b>
Maint./Assoc. <b>\$380 / \$285</b>	<a href="#">Flood Zone</a> : <b>Zone D - Tool</b>	Stories / CPR: <b>Two / No</b>
Parking: <b>3 Car+, Boat, Driveway, Garage</b>	Frontage: <b>Other</b>	
<a href="#">Zoning</a> : <b>51 - AG-1 Restricted Agricultur</b>	View: <b>Coastline, Garden, Mountain, Ocean, Sunset</b>	

**Public Remarks:** Seize a rare and exceptional chance to acquire a 5-acre haven in the seldom-available ,gated community of Poamoho Estates in Waialua. With just a short drive from Haleiwa Town and Oahu's finest beaches and direct route to Honolulu that bypasses the notorious North Shore traffic. Poamoho Estates has coastline views against the backdrop of beautiful mountains. Every detail reflects a meticulous blend of elegance and comfort, highlighted by high ceilings that create an airy and seamless connection with the natural environment. Step onto the vast covered lanai to be captivated by panoramic views, turning into a private retreat surrounded by lush palms and diverse fruit trees, with fencing and gates for peace of mind. The well-maintained pasture and barn offer limitless possibilities for equestrian pursuits, complemented by a greenhouse and processing center catering to agricultural activities. Whether your desire is a tranquil haven for relaxation or an inspiring oasis, this property has it all. Certified Pre-Owned. Priced over \$200k under appraised value. Buyer will earn instant equity. **Sale Conditions:** None **Schools:** , , \* [Request Showing](#), [Photos](#), [History](#), [Maps](#), [Deed](#), [Watch List](#), [Tax Info](#)





Address	Price	Bd & Bth	Living / Avg.	Land   Avg.	DOM
<a href="#">65-340 Poamoho Place</a>	<b>\$4,150,000</b>	3 & 3/0	2,255   \$1,840	217,886   \$19	157

Address	Tax   Maint.   Ass.	Assessed Land	Assessed Building	Assessed Total	Ratio	Year & Remodeled
<a href="#">65-340 Poamoho Place</a>	\$168   \$380   \$285	\$309,700	\$486,200	\$795,900	521%	2011 & NA

[65-340 Poamoho Place](#) - MLS#: [202326465](#) - Original price was \$4,350,000 - Seize a rare and exceptional chance to acquire a 5-acre haven in the seldom-available ,gated community of Poamoho Estates in Waialua. With just a short drive from Haleiwa Town and Oahu's finest beaches and direct route to Honolulu that bypasses the notorious North Shore traffic. Poamoho Estates has coastline views against the backdrop of beautiful mountains. Every detail reflects a meticulous blend of elegance and comfort, highlighted by high ceilings that create an airy and seamless connection with the natural environment. Step onto the vast covered lanai to be captivated by panoramic views, turning into a private retreat surrounded by lush palms and diverse fruit trees, with fencing and gates for peace of mind. The well-maintained pasture and barn offer limitless possibilities for equestrian pursuits, complemented by a greenhouse and processing center catering to agricultural activities. Whether your desire is a tranquil haven for relaxation or an inspiring oasis, this property has it all. Certified Pre-Owned. Priced over \$200k under appraised value. Buyer will earn instant equity. **Region:** North Shore **Neighborhood:** Waialua **Condition:** Excellent **Parking:** 3 Car+, Boat, Driveway, Garage **Total Parking:** 6 **View:** Coastline, Garden, Mountain, Ocean, Sunset **Frontage:** Other **Pool:** None **Zoning:** 51 - AG-1 Restricted Agricultur **Sale Conditions:** None **Schools:** , , \* [Request Showing](#), [Photos](#), [History](#), [Maps](#), [Deed](#), [Watch List](#), [Tax Info](#)

DOM = Days on Market