

Makaha Valley Towers 84-680 Kili Drive Unit 803, Waianae 96792 * \$325,000

Beds: **2**

MLS#: **202400183, FS**

Year Built: **1970**

Bath: **1/0**

Status: **Active Under Contract**

Remodeled:

Living Sq. Ft.: **802**

List Date & DOM: **01-03-2024 & 116**

Total Parking: **1**

Land Sq. Ft.: **612,759**

Condition: **Excellent**

[Assessed Value](#)

Lanai Sq. Ft.: **78**

Frontage:

Building: **\$244,500**

Sq. Ft. Other: **0**

Tax/Year: **\$82/2023**

Land: **\$37,600**

Total Sq. Ft. **880**

Neighborhood: **Makaha**

Total: **\$282,100**

Maint./Assoc. **\$1,260 / \$0**

[Flood Zone](#): **Zone AE - Tool**

Stories / CPR: **8-14 / No**

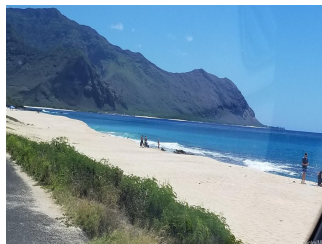
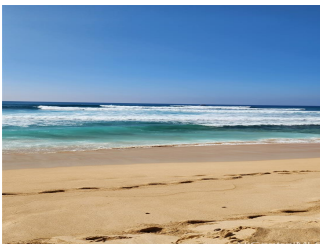
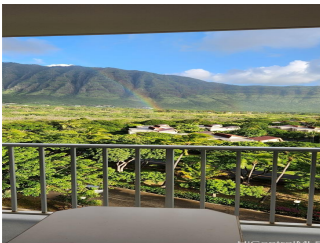
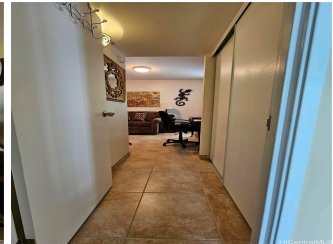
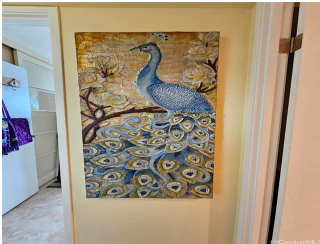
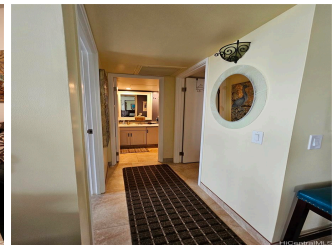
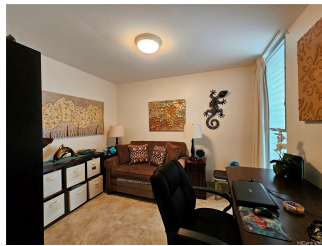
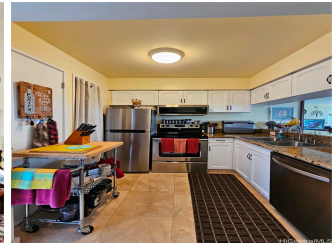
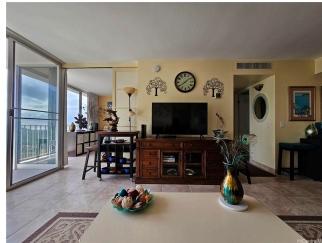
Parking: **Guest, Open - 1, Unassigned**

Frontage:

[Zoning](#): **12 - A-2 Medium Density Apartme**

View: **Coastline, Mountain, Ocean**

Public Remarks: Relax on your spacious balcony and enjoy the stunning views of the mountains and ocean. This 2 bedroom 1 bath unit is located on the 8th floor in the building closest to the ocean at Makaha Valley Towers. Updates include cabinets, granite counter tops, appliances, and ceramic flooring. Unit to be sold fully furnished with new black out drapes, fully stocked kitchen, beautiful artwork, updated living room furniture, king sized bed, sofa sleeper and much more. Makaha Valley Towers offers lots of amenities which include a beautiful landscaped grounds, heated pool, air conditioning, electricity, water, staffed office, laundry area steps away, BBQ area, 1 parking stall and 24 hour security. **Sale Conditions:** None **Schools:** , , * [Request Showing](#), [Photos](#), [History](#), [Maps](#), [Deed](#), [Watch List](#), [Tax Info](#)





Address	Price	Bd & Bth	Living / Avg.	Land Avg.	DOM
84-680 Kili Drive 803	\$325,000	2 & 1/0	802 \$405	612,759 \$1	116

Address	Tax Maint. Ass.	Assessed Land	Assessed Building	Assessed Total	Ratio	Year & Remodeled
84-680 Kili Drive 803	\$82 \$1,260 \$0	\$37,600	\$244,500	\$282,100	115%	1970 & NA

[84-680 Kili Drive 803](#) - MLS#: [202400183](#) - Relax on your spacious balcony and enjoy the stunning views of the mountains and ocean. This 2 bedroom 1 bath unit is located on the 8th floor in the building closest to the ocean at Makaha Valley Towers. Updates include cabinets, granite counter tops, appliances, and ceramic flooring. Unit to be sold fully furnished with new black out drapes, fully stocked kitchen, beautiful artwork, updated living room furniture, king sized bed, sofa sleeper and much more. Makaha Valley Towers offers lots of amenities which include a beautiful landscaped grounds, heated pool, air conditioning, electricity, water, staffed office, laundry area steps away, BBQ area, 1 parking stall and 24 hour security. **Region:** Leeward **Neighborhood:** Makaha **Condition:** Excellent **Parking:** Guest, Open - 1, Unassigned **Total Parking:** 1 **View:** Coastline, Mountain, Ocean **Frontage:** **Pool:** **Zoning:** 12 - A-2 Medium Density Apartme **Sale Conditions:** None **Schools:** , , * [Request Showing](#), [Photos](#), [History](#), [Maps](#), [Deed](#), [Watch List](#), [Tax Info](#)

DOM = Days on Market