

**1904 Iwi Way, Honolulu 96816 \* \$1,599,000 \* Originally \$1,667,000**

Beds: **3**

MLS#: **202400193, FS**

Year Built: **1966**

Bath: **2/1**

Status: **Active Under Contract**

Remodeled:

Living Sq. Ft.: **1,196**

List Date & DOM: **01-03-2024 & 105**

Total Parking: **2**

Land Sq. Ft.: **5,457**

Condition: **Excellent**

[Assessed Value](#)

Lanai Sq. Ft.: **554**

Frontage:

Building: **\$214,400**

Sq. Ft. Other: **368**

Tax/Year: **\$556/2023**

Land: **\$1,019,600**

Total Sq. Ft. **2,118**

Neighborhood: **Maunalani Heights**

Total: **\$1,234,000**

Maint./Assoc. **\$0 / \$0**

[Flood Zone](#): **Zone X - Tool**

Stories / CPR: **One / No**

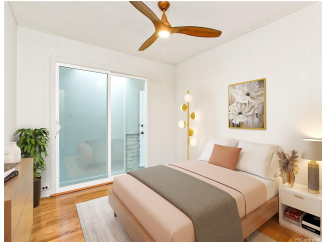
Parking: **2 Car, Carport, Street**

Frontage:

[Zoning](#): **05 - R-5 Residential District**

View: **Diamond Head, Ocean**

**Public Remarks:** Immerse yourself in the serenity of Maunalani Heights with this beautiful single-level home with stunning views! Nestled by a quiet road, this residence features an open floor plan that transitions seamlessly from indoor to outdoor space with a refreshing pool! Updated kitchen boasts beautiful cabinets, granite countertops with a breakfast bar overhang, stylish backsplash and ss appliances. The large, bright and breezy living area opens to breathtaking ocean and iconic Diamond Head views! Enjoy the panoramic vista from the huge wrap-around lanai. Each bedroom has its own sliding doors to enjoy the outside. Home also boasts a large bonus/studio room with a separate entrance and a full bath, perfect for additional living space, home office, rental opportunity or any creative endeavor. Beautifully refinished hardwood floor in the main area and brand new floor in the bonus room. New paint on the interior and exterior completes the modern updates. Relax and unwind in the backyard oasis with a beautiful tiled pool, perfect for relaxation and entertainment. Close to great schools, the University of Hawaii, Waikiki, Diamond Head and the best of everything Honolulu living has to offer! **Sale Conditions:** None  
**Schools:** [Waialae](#), [Kaimuki](#), [Kalani](#) \* [Request Showing](#), [Photos](#), [History](#), [Maps](#), [Deed](#), [Watch List](#), [Tax Info](#)





Address	Price	Bd & Bth	Living / Avg.	Land   Avg.	DOM
<a href="#">1904 Iwi Way</a>	<b>\$1,599,000</b>	3 & 2/1	1,196   \$1,337	5,457   \$293	105

Address	Tax   Maint.   Ass.	Assessed Land	Assessed Building	Assessed Total	Ratio	Year & Remodeled
<a href="#">1904 Iwi Way</a>	\$556   \$0   \$0	\$1,019,600	\$214,400	\$1,234,000	130%	1966 & NA

[1904 Iwi Way](#) - MLS#: [202400193](#) - Original price was \$1,667,000 - Immerse yourself in the serenity of Maunalani Heights with this beautiful single-level home with stunning views! Nestled by a quiet road, this residence features an open floor plan that transitions seamlessly from indoor to outdoor space with a refreshing pool! Updated kitchen boasts beautiful cabinets, granite countertops with a breakfast bar overhang, stylish backsplash and ss appliances. The large, bright and breezy living area opens to breathtaking ocean and iconic Diamond Head views! Enjoy the panoramic vista from the huge wrap-around lanai. Each bedroom has its own sliding doors to enjoy the outside. Home also boasts a large bonus/studio room with a separate entrance and a full bath, perfect for additional living space, home office, rental opportunity or any creative endeavor. Beautifully refinished hardwood floor in the main area and brand new floor in the bonus room. New paint on the interior and exterior completes the modern updates. Relax and unwind in the backyard oasis with a beautiful tiled pool, perfect for relaxation and entertainment. Close to great schools, the University of Hawaii, Waikiki, Diamond Head and the best of everything Honolulu living has to offer! **Region:** Diamond Head **Neighborhood:** Maunalani Heights **Condition:** Excellent **Parking:** 2 Car, Carport, Street **Total Parking:** 2 **View:** Diamond Head, Ocean **Frontage:** **Pool:** In Ground, Tile **Zoning:** 05 - R-5 Residential District **Sale Conditions:** None **Schools:** [Waiālae](#), [Kaimuki](#), [Kalani](#) \* [Request Showing](#), [Photos](#), [History](#), [Maps](#), [Deed](#), [Watch List](#), [Tax Info](#)

DOM = Days on Market