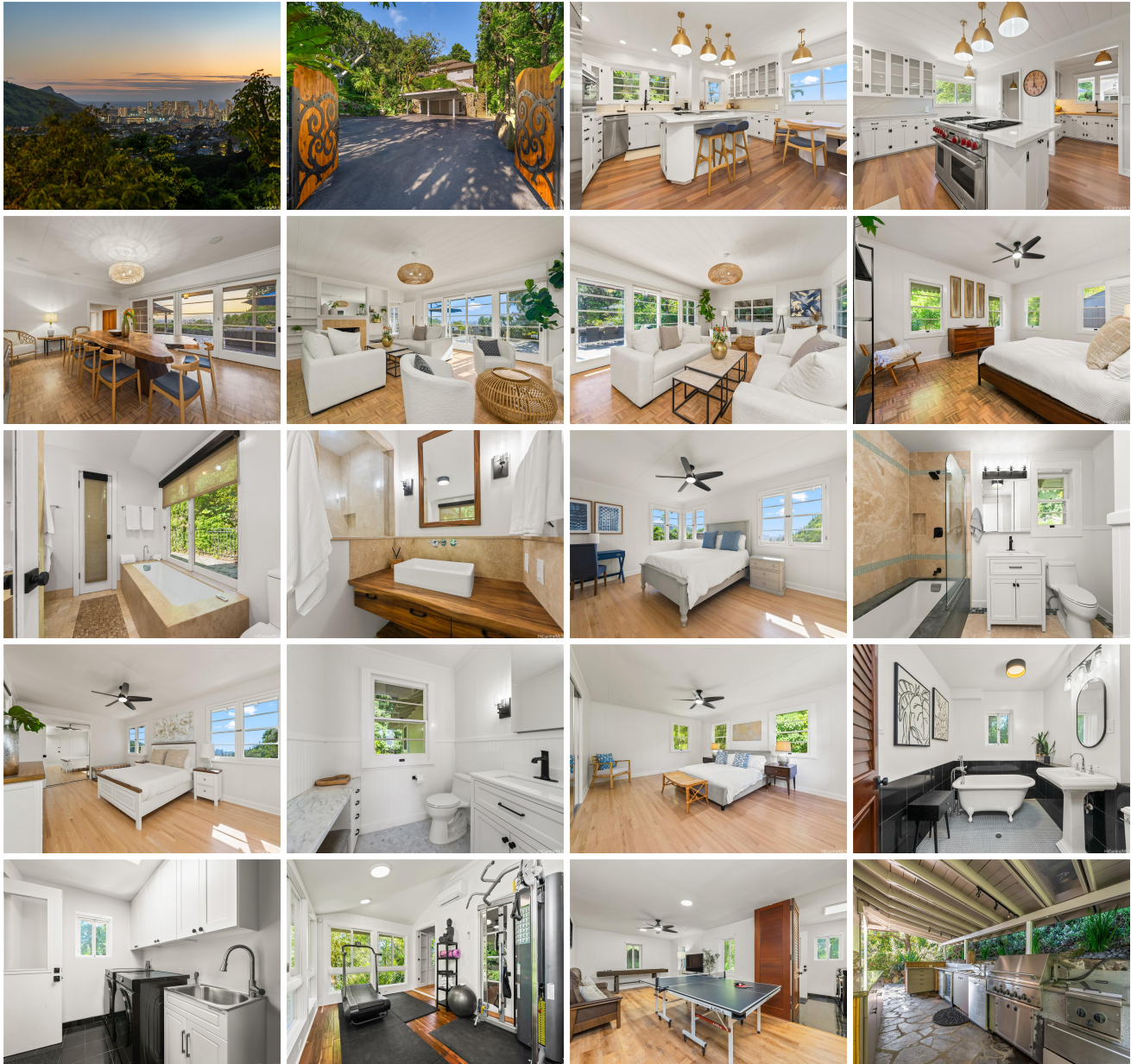


3125 Huelani Place, Honolulu 96822 * \$4,256,300

Beds: 5	MLS#: <u>202400311</u>, FS	Year Built: 1937
Bath: 3/1	Status: Active	Remodeled: 2023
Living Sq. Ft.: 4,178	List Date & DOM: 01-05-2024 & 125	Total Parking: 8
Land Sq. Ft.: 40,752	Condition: Excellent	Assessed Value
Lanai Sq. Ft.: 2,358	Frontage:	Building: \$369,600
Sq. Ft. Other: 784	Tax/Year: \$3,427/2023	Land: \$3,886,700
Total Sq. Ft. 7,320	Neighborhood: Manoa Area	Total: \$4,256,300
Maint./Assoc. \$0 / \$0	Flood Zone : Zone X - Tool	Stories / CPR: Three+ / No
Parking: 3 Car+, Carport, Driveway, Street	Frontage:	
Zoning : 04 - R-7.5 Residential District	View: City, Mountain, Ocean, Other	

Public Remarks: Welcome to 3125 Huelani Place, where the historic natural beauty encompasses this estate. With over 40,000sf of R-7.5 zoned land, the property has a true estate feel. Three distinct structures grace the property: the main house, a guest cottage, and a carriage house with parking for 8 cars. The home itself was originally designed by accomplished architect Louis E. Davis, newly renovation completed in 2023 with additional development potential. Features include exceptionally large rooms, 9 foot ceilings, Koa hardwood entry doors, hardwood floors throughout, gym, fireplace, outside BBQ kitchen, game room, and a noteworthy amount of storage space throughout. Over 2300 sqft of patio space to entertain and enjoy Waikiki sunset views, amazing green mountains, and the Honolulu city lights. Tucked away behind the driveway gates is your own private forest of poured concrete garden paths beautiful trees and tropical Hawaiian plants. Short distance to many of Oahu's most desirable schools. Whether you schedule to see this property at Sunrise, Mid-Day or Sunset, you won't be disappointed. Please call your Realtor for a link to the Matterport walk through tour. **Sale Conditions:** None

Schools: , , * [Request Showing](#), [Photos](#), [History](#), [Maps](#), [Deed](#), [Watch List](#), [Tax Info](#)





Address	Price	Bd & Bth	Living / Avg.	Land Avg.	DOM
3125 Huelani Place	\$4,256,300	5 & 3/1	4,178 \$1,019	40,752 \$104	125

Address	Tax Maint. Ass.	Assessed Land	Assessed Building	Assessed Total	Ratio	Year & Remodeled
3125 Huelani Place	\$3,427 \$0 \$0	\$3,886,700	\$369,600	\$4,256,300	100%	1937 & 2023

[3125 Huelani Place](#) - MLS#: [202400311](#) - Welcome to 3125 Huelani Place, where the historic natural beauty encompasses this estate. With over 40,000sf of R-7.5 zoned land, the property has a true estate feel. Three distinct structures grace the property: the main house, a guest cottage, and a carriage house with parking for 8 cars. The home itself was originally designed by accomplished architect Louis E. Davis, newly renovation completed in 2023 with additional development potential. Features include exceptionally large rooms, 9 foot ceilings, Koa hardwood entry doors, hardwood floors throughout, gym, fireplace, outside BBQ kitchen, game room, and a noteworthy amount of storage space throughout. Over 2300 sqft of patio space to entertain and enjoy Waikiki sunset views, amazing green mountains, and the Honolulu city lights. Tucked away behind the driveway gates is your own private forest of poured concrete garden paths beautiful trees and tropical Hawaiian plants. Short distance to many of Oahu's most desirable schools. Whether you schedule to see this property at Sunrise, Mid-Day or Sunset, you won't be disappointed. Please call your Realtor for a link to the Matterport walk through tour. **Region:** Metro **Neighborhood:** Manoa Area **Condition:** Excellent **Parking:** 3 Car+, Carport, Driveway, Street **Total Parking:** 8 **View:** City, Mountain, Ocean, Other **Frontage:** **Pool:** None **Zoning:** 04 - R-7.5 Residential District **Sale Conditions:** None **Schools:** , , * [Request Showing](#), [Photos](#), [History](#), [Maps](#), [Deed](#), [Watch List](#), [Tax Info](#)

DOM = Days on Market