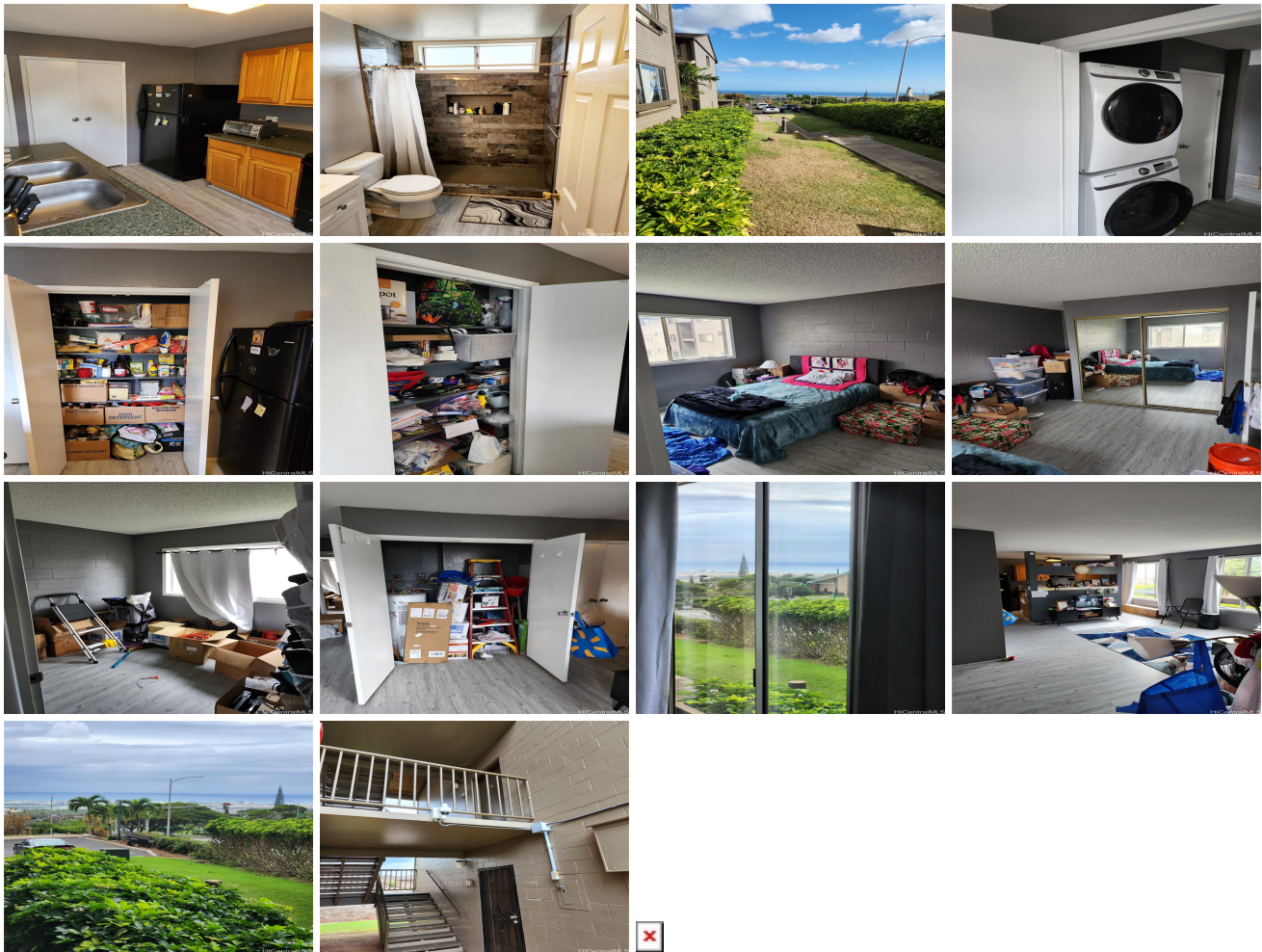


# **Palehua Villas 92-1128 Panana Street Unit 118, Kapolei 96707 \* \$429,900 \* Originally**

**\$450,000**

Beds: <b>2</b>	MLS#: <b><u>202400923</u>, FS</b>	Year Built: <b>1988</b>
Bath: <b>1/0</b>	Status: <b>Pending</b>	Remodeled:
Living Sq. Ft.: <b>743</b>	List Date & DOM: <b>01-16-2024 &amp; 117</b>	Total Parking: <b>1</b>
Land Sq. Ft.: <b>106,156</b>	Condition: <b>Above Average</b>	<a href="#">Assessed Value</a>
Lanai Sq. Ft.: <b>0</b>	Frontage:	Building: <b>\$173,400</b>
Sq. Ft. Other: <b>0</b>	Tax/Year: <b>\$53/2023</b>	Land: <b>\$208,800</b>
Total Sq. Ft. <b>743</b>	Neighborhood: <b>Makakilo-upper</b>	Total: <b>\$382,200</b>
Maint./Assoc. <b>\$366 / \$0</b>	<a href="#">Flood Zone</a> : <b>Zone D - <u>Tool</u></b>	Stories / CPR: <b>One / No</b>
Parking: <b>Assigned, Open - 1</b>	Frontage:	
<a href="#">Zoning</a> : <b>11 - A-1 Low Density Apartment</b>	View: <b>City, Ocean, Other, Sunset</b>	

**Public Remarks:** This is a very ground floor unit with great views of the ocean and Ewa Plain. The home was recently updated with wood-look tile floors and new paint. The kitchen has been updated from the original with oak cabinets and new countertops. The bathroom has been completely with a white shaker cabinet vanity and custom tile step-in shower. There is a full size stacked washer and dryer in the unit. Tons of cabinet space with large closets plus two additional closets in the main room plus two pantries. Maintenance fees of only \$366 per month include water, sewer and building maintenance. In addition to the assigned parking this unit has tons of parking close by. **Sale Conditions:** None **Schools:** , , \* [Request Showing](#), [Photos](#), [History](#), [Maps](#), [Deed](#), [Watch List](#), [Tax Info](#)



Address	Price	Bd & Bth	Living / Avg.	Land   Avg.	DOM
<a href="#">92-1128 Panana Street 118</a>	<b>\$429,900</b>	2 & 1/0	743   \$579	106,156   \$4	117

Address	Tax   Maint.   Ass.	Assessed Land	Assessed Building	Assessed Total	Ratio	Year & Remodeled
<a href="#">92-1128 Panana Street 118</a>	\$53   \$366   \$0	\$208,800	\$173,400	\$382,200	112%	1988 & NA

[92-1128 Panana Street 118](#) - MLS#: [202400923](#) - Original price was \$450,000 - This is a very ground floor unit with great views of the ocean and Ewa Plain. The home was recently updated with wood-look tile floors and new paint. The kitchen has been updated from the original with oak cabinets and new countertops. The bathroom has been completely with a white shaker cabinet vanity and custom tile step-in shower. There is a full size stacked washer and dryer in the unit. Tons of cabinet space with large closets plus two additional closets in the main room plus two pantries. Maintenance fees of only \$366 per month include water, sewer and building maintenance. In addition to the assigned parking this unit has tons of parking close by. **Region:** Makakilo **Neighborhood:** Makakilo-upper **Condition:** Above Average **Parking:** Assigned, Open - 1 **Total Parking:** 1 **View:** City, Ocean, Other, Sunset **Frontage:** **Pool:** **Zoning:** 11 - A-1 Low Density Apartment **Sale Conditions:** None **Schools:** , , \* [Request Showing](#), [Photos](#), [History](#), [Maps](#), [Deed](#), [Watch List](#), [Tax Info](#)

DOM = Days on Market