

1431 Kamole Street, Honolulu 96821 * \$2,418,000

Beds: **4**
Bath: **3/0**
Living Sq. Ft.: **2,339**
Land Sq. Ft.: **9,984**
Lanai Sq. Ft.: **530**
Sq. Ft. Other: **0**
Total Sq. Ft. **2,869**
Maint./Assoc. **\$0 / \$31**

MLS#: **202401523, FS**
Status: **Pending**
List Date & DOM: **03-22-2024 & 8**
Condition: **Above Average**
Frontage:
Tax/Year: **\$526/2024**
Neighborhood: **Waialae Iki**
Flood Zone: **Zone X - Tool**

Year Built: **1964**
Remodeled: **2008**
Total Parking: **2**
Assessed Value
Building: **\$464,700**
Land: **\$1,581,600**
Total: **\$2,046,300**
Stories / CPR: **Two / No**

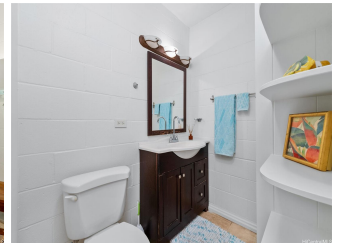
Parking: **2 Car, Driveway, Garage, Street**

Frontage:

Zoning: **04 - R-7.5 Residential District**

View: **Coastline, Diamond Head, Ocean**

Public Remarks: NEW LISTING!! Spectacular unobstructed and panoramic Diamond Head, ocean, and sunset views await you from this beautifully renovated and immaculately maintained 4 bdrm/3 bath single-family home located on one of the best streets in the highly coveted Waialae Iki neighborhood. Situated on a nearly 10,000 sq. ft. lot, this home features an open floor plan, an updated kitchen with stainless-steel appliances, renovated baths, and new carpet. Plus, one of the bedrooms and baths is located on the ground level and offers a separate entry. Without going too far up the ridge, you can enjoy the panoramic ocean views from the generous wrap around deck or relax on the spacious covered lanai and gated landscaped backyard, ideal for entertaining. Conveniently located adjacent to Kamole Mini Park and near Kahala Mall with a variety of shopping, dining, and entertainment. A must see! **Sale Conditions:** None **Schools:** [Aina Haina](#), [Niu Valley](#), [Kalani](#) * [Request Showing](#), [Photos](#), [History](#), [Maps](#), [Deed](#), [Watch List](#), [Tax Info](#)





Address	Price	Bd & Bth	Living / Avg.	Land Avg.	DOM
1431 Kamole Street	\$2,418,000	4 & 3/0	2,339 \$1,034	9,984 \$242	8

Address	Tax Maint. Ass.	Assessed Land	Assessed Building	Assessed Total	Ratio	Year & Remodeled
1431 Kamole Street	\$526 \$0 \$31	\$1,581,600	\$464,700	\$2,046,300	118%	1964 & 2008

[1431 Kamole Street](#) - MLS#: [202401523](#) - NEW LISTING!! Spectacular unobstructed and panoramic Diamond Head, ocean, and sunset views await you from this beautifully renovated and immaculately maintained 4 bdrm/3 bath single-family home located on one of the best streets in the highly coveted Waialae Iki neighborhood. Situated on a nearly 10,000 sq. ft. lot, this home features an open floor plan, an updated kitchen with stainless-steel appliances, renovated baths, and new carpet. Plus, one of the bedrooms and baths is located on the ground level and offers a separate entry. Without going too far up the ridge, you can enjoy the panoramic ocean views from the generous wrap around deck or relax on the spacious covered lanai and gated landscaped backyard, ideal for entertaining. Conveniently located adjacent to Kamole Mini Park and near Kahala Mall with a variety of shopping, dining, and entertainment. A must see! **Region:** Diamond Head **Neighborhood:** Waialae Iki **Condition:** Above Average **Parking:** 2 Car, Driveway, Garage, Street **Total Parking:** 2 **View:** Coastline, Diamond Head, Ocean **Frontage:** Pool: None **Zoning:** 04 - R-7.5 Residential District **Sale Conditions:** None **Schools:** [Aina Haina](#), [Niu Valley](#), [Kalani](#) * [Request Showing](#), [Photos](#), [History](#), [Maps](#), [Deed](#), [Watch List](#), [Tax Info](#)

DOM = Days on Market