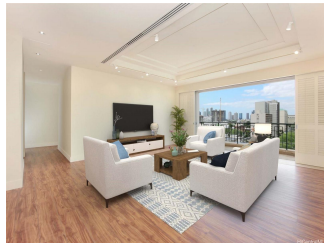


## **Courtyards At Punahou 1740 S Beretania Street Unit 8, Honolulu 96826 \* \$2,000,000**

Beds: <b>3</b>	MLS#: <b>202401587, FS</b>	Year Built: <b>1993</b>
Bath: <b>3/1</b>	Status: <b>Active</b>	Remodeled: <b>2023</b>
Living Sq. Ft.: <b>2,277</b>	List Date & DOM: <b>01-29-2024 &amp; 109</b>	Total Parking: <b>3</b>
Land Sq. Ft.: <b>51,357</b>	Condition: <b>Excellent</b>	<a href="#">Assessed Value</a>
Lanai Sq. Ft.: <b>232</b>	Frontage: <b>Other</b>	Building: <b>\$1,396,100</b>
Sq. Ft. Other: <b>0</b>	Tax/Year: <b>\$433/2023</b>	Land: <b>\$287,400</b>
Total Sq. Ft. <b>2,509</b>	Neighborhood: <b>Moiliili</b>	Total: <b>\$1,683,500</b>
Maint./Assoc. <b>\$5,096 / \$0</b>	<a href="#">Flood Zone</a> : <b>Zone X - Tool</b>	Stories / CPR: <b>One / No</b>
Parking: <b>Assigned, Covered - 3+, Guest, Secured Entry</b>	Frontage: <b>Other</b>	
<a href="#">Zoning</a> : <b>12 - A-2 Medium Density Apartme</b>	View: <b>City, Other</b>	

**Public Remarks:** Welcome home to Courtyards at Punahou. Enjoy this luxurious condo in the heart of Honolulu. This open concept living space is highly desired in one of Oahu's most popular urban cities. Live in luxury in this spacious 3 bedroom, 3.5 bath residence. Secured elevator access leads you to your own private foyer and welcomes you into your elegant home with high ceilings and large lanais. New Quality Hawaiian King Koa vinyl plank flooring, all new base moldings and premium sound and energy insulating subfloor thought-out the unit The Courtyard at Punahou offers residential living with the convenience of a condo. Very private and highly secured residence includes 3 side by side parking stalls and a large storage unit. Enjoy this conveniently located building with luxurious amenities and lots of guest parking. Located near Ala Moana, Waikiki, Downtown with easy access to the freeway. **Sale Conditions:** None **Schools:** [Lunalilo](#), [Washington](#), [Kaimuki](#) \* [Request Showing](#), [Photos](#), [History](#), [Maps](#), [Deed](#), [Watch List](#), [Tax Info](#)



Address	Price	Bd & Bth	Living / Avg.	Land   Avg.	DOM
<a href="#">1740 S Beretania Street 8</a>	<a href="#">\$2,000,000</a>	3 & 3/1	2,277   \$878	51,357   \$39	109

Address	Tax   Maint.   Ass.	Assessed Land	Assessed Building	Assessed Total	Ratio	Year & Remodeled
<a href="#">1740 S Beretania Street 8</a>	\$433   \$5,096   \$0	\$287,400	\$1,396,100	\$1,683,500	119%	1993 & 2023

[1740 S Beretania Street 8](#) - MLS#: [202401587](#) - Welcome home to Courtyards at Punahou. Enjoy this luxurious condo in the heart of Honolulu. This open concept living space is highly desired in one of Oahu's most popular urban cities. Live in luxury in this spacious 3 bedroom, 3.5 bath residence. Secured elevator access leads you to your own private foyer and welcomes you into your elegant home with high ceilings and large lanais. New Quality Hawaiian King Koa vinyl plank flooring, all new base moldings and premium sound and energy insulating subfloor thought-out the unit The Courtyard at Punahou offers residential living with the convenience of a condo. Very private and highly secured residence includes 3 side by side parking stalls and a large storage unit. Enjoy this conveniently located building with luxurious amenities and lots of guest parking. Located near Ala Moana, Waikiki, Downtown with easy access to the freeway. **Region:** Metro **Neighborhood:** Moiliili **Condition:** Excellent **Parking:** Assigned, Covered - 3+, Guest, Secured Entry **Total Parking:** 3 **View:** City, Other **Frontage:** Other **Pool:** **Zoning:** 12 - A-2 Medium Density Apartme **Sale Conditions:** None **Schools:** [Lunalilo](#), [Washington](#), [Kaimuki](#) \* [Request Showing](#), [Photos](#), [History](#), [Maps](#), [Deed](#), [Watch List](#), [Tax Info](#)

DOM = Days on Market