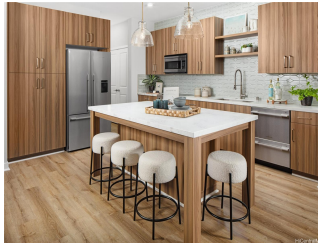


91-1101 Franklin D Roosevelt Avenue Unit 146, Kapolei 96707 * \$947,600

Beds: 3	MLS#: 202401711, FS	Year Built: 2024
Bath: 2/1	Status: Active Under Contract	Remodeled:
Living Sq. Ft.: 1,581	List Date & DOM: 01-30-2024 & 65	Total Parking: 2
Land Sq. Ft.: 2,567	Condition: Excellent	Assessed Value
Lanai Sq. Ft.: 0	Frontage:	Building: \$0
Sq. Ft. Other: 58	Tax/Year: \$0/2024	Land: \$0
Total Sq. Ft. 1,639	Neighborhood: Ag-indl-navy	Total: \$0
Maint./Assoc. \$258 / \$0	Flood Zone : Zone D - Tool	Stories / CPR: Two / Yes
Parking: 2 Car, Garage	Frontage:	
Zoning : 12 - A-2 Medium Density Apartme	View: Garden	

Public Remarks: Brand new construction in Kalaeloa! This beautiful 3 bed, 2.5 bath home with an additional family room has 9' ceilings, Designer cabinets, Corian counters, Kohler fixtures and so much more! The energy saving features include Central AC, Seer2 (16+), 80 gallon solar hot water tank,spray foam insulation, LED lighting, Digital thermostat, Insulated garage door, EV ready, Low-E vinyl windows and Energy star stainless steel appliances. Standard flooring is Luxury Vinyl Plank and plush carpeting, but the choice is up to you to upgrade if desired. This home is located on a beautiful green open space ready for move in at closing! The seller is offering a 3% credit to be used for closing costs or to buy down points/interest rates. Our Ka'ulu community is in a fabulous location, close to beaches, shopping, entertainment the freeway and so much more. Come and check out all our VIP features! Our model homes are open from 10-5 Tues-Sun, and 12-5 on Mondays. (Pictures are of model home). **Sale Conditions:** None **Schools:** [Barbers Point](#), [Kapolei](#), [Kapolei](#) * [Request Showing](#), [Photos](#), [History](#), [Maps](#), [Deed](#), [Watch List](#), [Tax Info](#)



Address	Price	Bd & Bth	Living / Avg.	Land Avg.	DOM
91-1101 Franklin D Roosevelt Avenue 146	\$947,600	3 & 2/1	1,581 \$599	2,567 \$369	65

Address	Tax Maint. Ass.	Assessed Land	Assessed Building	Assessed Total	Ratio	Year & Remodeled
91-1101 Franklin D Roosevelt Avenue 146	\$0 \$258 \$0	\$0	\$0	\$0	inf%	2024 & NA

[91-1101 Franklin D Roosevelt Avenue 146](#) - MLS#: [202401711](#) - Brand new construction in Kalaeloa! This beautiful 3 bed, 2.5 bath home with an additional family room has 9' ceilings, Designer cabinets, Corian counters, Kohler fixtures and so much more! The energy saving features include Central AC, Seer2 (16+), 80 gallon solar hot water tank,spray foam insulation, LED lighting, Digital thermostat, Insulated garage door, EV ready, Low-E vinyl windows and Energy star stainless steel appliances. Standard flooring is Luxury Vinyl Plank and plush carpeting, but the choice is up to you to upgrade if desired. This home is located on a beautiful green open space ready for move in at closing! The seller is offering a 3% credit to be used for closing costs or to buy down points/interest rates. Our Ka'ulu community is in a fabulous location, close to beaches, shopping, entertainment the freeway and so much more. Come and check out all our VIP features! Our model homes are open from 10-5 Tues-Sun, and 12-5 on Mondays. (Pictures are of model home). **Region:** Ewa Plain **Neighborhood:** Ag-indl-navy **Condition:** Excellent **Parking:** 2 Car, Garage **Total Parking:** 2 **View:** Garden **Frontage:** Pool: None **Zoning:** 12 - A-2 Medium Density Apartme **Sale Conditions:** None **Schools:** [Barbers Point](#), [Kapolei](#), [Kapolei](#) * [Request Showing](#), [Photos](#), [History](#), [Maps](#), [Deed](#), [Watch List](#), [Tax Info](#)

DOM = Days on Market