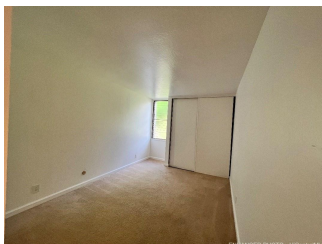
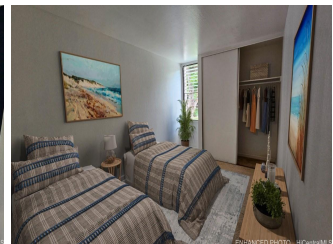
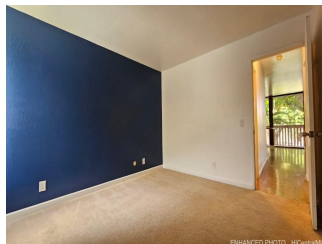


Makaha Valley Pltn 84-664 Ala Mahiku Street Unit 175A, Waianae 96792 * \$336,200 *

Originally \$376,000

Beds: 2	MLS#: <u>202402935</u>, FS	Year Built: 1975
Bath: 1/0	Status: Active	Remodeled: 1980
Living Sq. Ft.: 815	List Date & DOM: 02-02-2024 & 99	Total Parking: 1
Land Sq. Ft.: 1,222,729	Condition: Excellent, Above Average	Assessed Value
Lanai Sq. Ft.: 120	Frontage: Other	Building: \$209,800
Sq. Ft. Other: 0	Tax/Year: \$75/2023	Land: \$48,400
Total Sq. Ft. 935	Neighborhood: Makaha	Total: \$258,200
Maint./Assoc. \$786 / \$0	Flood Zone : Zone D - Tool	Stories / CPR: Three / No
Parking: Open - 1	Frontage: Other	
Zoning : 12 - A-2 Medium Density Apartme	View: Mountain	

Public Remarks: PRICE IMPROVEMENT! Awesome 2 Bedroom Condo in Popular Makaha Valley Plantation with Spacious Lanai. Beautiful 2 bed, 1 bath first Floor unit w/private entrance, in Makaha Valley Plantation Beautifully landscaped with mango & palm trees & natural light. Shady with breezy relaxing atmosphere. The Plantations offers many amenities for residents to enjoy, including pools, tennis courts, spas, basketball courts, on site mailboxes gated community w/24 hour security & Car Wash. These facilities provide opportunities for recreation & relaxation within the community. In close proximity to the beach, a fantastic feature for beach enthusiasts & those who enjoy the coastal lifestyle. Newer Appliances in the kitchen & freshly painted bedrooms, bathroom and kitchen are likely to enhance the overall appeal and functionality of this modern space. This 2 bedroom unit in tropical setting appears as desirable option if seeking a bright, airy and well-equipped living space, in a scenic location. Portable bedroom & living room ac's & flat screen tv included. Pickle ball available. \$5000 sellers credit for flooring or Closing Cost. Make Offer! "One or more photos are enhanced or virtually Staged" **Sale Conditions:** None **Schools:** , , * [Request Showing](#), [Photos](#), [History](#), [Maps](#), [Deed](#), [Watch List](#), [Tax Info](#)





Address	Price	Bd & Bth	Living / Avg.	Land Avg.	DOM
84-664 Ala Mahiku Street 175A	\$336,200	2 & 1/0	815 \$413	1,222,729 \$0	99

Address	Tax Maint. Ass.	Assessed Land	Assessed Building	Assessed Total	Ratio	Year & Remodeled
84-664 Ala Mahiku Street 175A	\$75 \$786 \$0	\$48,400	\$209,800	\$258,200	130%	1975 & 1980

[84-664 Ala Mahiku Street 175A](#) - MLS#: [202402935](#) - Original price was \$376,000 - PRICE IMPROVEMENT! Awesome 2 Bedroom Condo in Popular Makaha Valley Plantation with Spacious Lanai. Beautiful 2 bed, 1 bath first Floor unit w/private entrance, in Makaha Valley Plantation Beautifully landscaped with mango & palm trees & natural light. Shady with breezy relaxing atmosphere. The Plantations offers many amenities for residents to enjoy, including pools, tennis courts, spas, basketball courts, on site mailboxes gated community w/24 hour security & Car Wash. These facilities provide opportunities for recreation & relaxation within the community. In close proximity to the beach, a fantastic feature for beach enthusiasts & those who enjoy the coastal lifestyle. Newer Appliances in the kitchen & freshly painted bedrooms, bathroom and kitchen are likely to enhance the overall appeal and functionality of this modern space. This 2 bedroom unit in tropical setting appears as desirable option if seeking a bright, airy and well-equipped living space, in a scenic location. Portable bedroom & living room ac's & flat screen tv included. Pickle ball available. \$5000 sellers credit for flooring or Closing Cost. Make Offer! "One or more photos are enhanced or virtually Staged" **Region:** Leeward **Neighborhood:** Makaha **Condition:** Excellent, Above Average **Parking:** Open - 1 **Total Parking:** 1 **View:** Mountain **Frontage:** Other **Pool:** **Zoning:** 12 - A-2 Medium Density Apartme **Sale Conditions:** None **Schools:** , , * [Request Showing](#), [Photos](#), [History](#), [Maps](#), [Deed](#), [Watch List](#), [Tax Info](#)

DOM = Days on Market