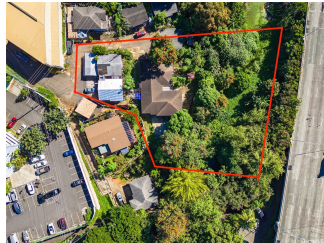


735 Kamehameha Highway, Pearl City 96782 * \$1,830,000 * Originally \$2,250,000

Beds: **10** MLS#: **202403141, FS** Year Built: **1964**
 Bath: **4/1** Status: **Active** Remodeled: **1979**
 Living Sq. Ft.: **3,471** List Date & DOM: **02-13-2024 & 93** Total Parking: **6**
 Land Sq. Ft.: **39,372** Condition: **Above Average, Average** [Assessed Value](#)
 Lanai Sq. Ft.: **0** Frontage: Building: **\$469,000**
 Sq. Ft. Other: **0** Tax/Year: **\$432/2023** Land: **\$1,010,600**
 Total Sq. Ft. **3,471** Neighborhood: **Navy-federal** Total: **\$1,479,600**
 Maint./Assoc. **\$0 / \$0** [Flood Zone](#): **Zone D - Tool** Stories / CPR: **One, Two / No**
 Parking: **3 Car+** Frontage: View: **Garden, Other**
[Zoning](#): **05 - R-5 Residential District**

Public Remarks: All offers considered. Ideal for investors, developers, or anyone eager to tap into immediate income potential, this property presents a unique opportunity. With expansive land, it opens the door to a multitude of development prospects—available renderings showcase the potential. Distinguished by its natural spring, the estate offers a sustainable water source, perfect for pioneering agricultural projects or serene residential settings. Currently, it includes two 2-bedroom, 1-bathroom homes and a 6-bedroom, 3-bathroom duplex, all generating consistent monthly revenue. Equipped with 2 water meters and 3 electric meters, such a find on Oahu, Hawaii, is exceptionally rare. Tenants are currently month to month **Sale Conditions:** None **Schools:** , , * [Request Showing](#), [Photos](#), [History](#), [Maps](#), [Deed](#), [Watch List](#), [Tax Info](#)



Address	Price	Bd & Bth	Living / Avg.	Land Avg.	DOM
735 Kamehameha Highway	\$1,830,000	10 & 4/1	3,471 \$527	39,372 \$46	93

Address	Tax Maint. Ass.	Assessed Land	Assessed Building	Assessed Total	Ratio	Year & Remodeled
735 Kamehameha Highway	\$432 \$0 \$0	\$1,010,600	\$469,000	\$1,479,600	124%	1964 & 1979

[735 Kamehameha Highway](#) - MLS#: [202403141](#) - Original price was \$2,250,000 - All offers considered. Ideal for investors, developers, or anyone eager to tap into immediate income potential, this property presents a unique opportunity. With expansive land, it opens the door to a multitude of development prospects—available renderings showcase the potential. Distinguished by its natural spring, the estate offers a sustainable water source, perfect for pioneering agricultural projects or serene residential settings. Currently, it includes two 2-bedroom, 1-bathroom homes and a 6-bedroom, 3-bathroom duplex, all generating consistent monthly revenue. Equipped with 2 water meters and 3 electric meters, such a find on Oahu, Hawaii, is exceptionally rare. Tenants are currently month to month **Region:** Pearl City **Neighborhood:** Navy-federal **Condition:** Above Average, Average **Parking:** 3 Car+ **Total Parking:** 6 **View:** Garden, Other **Frontage:** **Pool:** None **Zoning:** 05 - R-5 Residential District **Sale Conditions:** None **Schools:** , , * [Request Showing](#), [Photos](#), [History](#), [Maps](#), [Deed](#), [Watch List](#), [Tax Info](#)

DOM = Days on Market