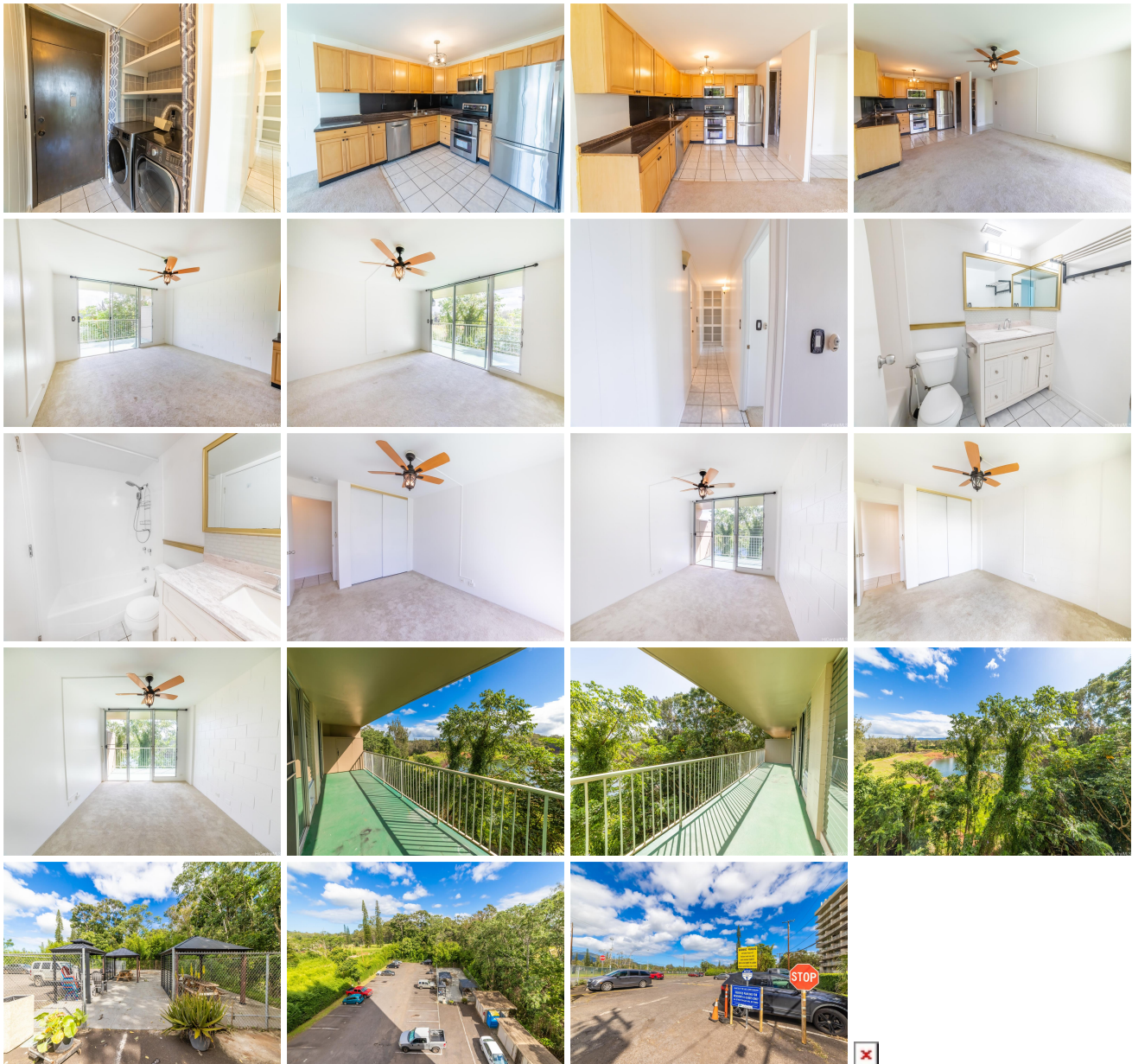


**Kemoo By Lake 1830 Wilikina Drive Unit 505, Wahiawa 96786 \* \$380,000 \* Originally**

**\$399,000**

Beds: <b>2</b>	MLS#: <b><u>202403254</u>, FS</b>	Year Built: <b>1972</b>
Bath: <b>1/0</b>	Status: <b>Active</b>	Remodeled:
Living Sq. Ft.: <b>881</b>	List Date & DOM: <b>02-28-2024 &amp; 78</b>	Total Parking: <b>2</b>
Land Sq. Ft.: <b>63,815</b>	Condition: <b>Above Average, Average</b>	<a href="#">Assessed Value</a>
Lanai Sq. Ft.: <b>277</b>	Frontage: <b>Lake/Pond</b>	Building: <b>\$272,600</b>
Sq. Ft. Other: <b>0</b>	Tax/Year: <b>\$72/2024</b>	Land: <b>\$81,300</b>
Total Sq. Ft. <b>1,158</b>	Neighborhood: <b>Wilikina</b>	Total: <b>\$353,900</b>
Maint./Assoc. <b>\$774 / \$0</b>	<a href="#">Flood Zone</a> : <b>Zone D - Tool</b>	Stories / CPR: <b>One / No</b>
Parking: <b>Assigned, Guest, Open - 2</b>	Frontage: <b>Lake/Pond</b>	
<a href="#">Zoning</a> : <b>12 - A-2 Medium Density Apartme</b>	View: <b>Sunrise</b>	

**Public Remarks:** Price Improvement!!! Welcome to Kemoo By The Lake! This spacious 881sf unit with two bedrooms and one bathroom is situated in a secure building and is an ideal find for first-time buyers or investors. This unit offers a spacious living area, lanai access from both bedrooms, in-unit washer and dryer, stainless steel appliances, and bathtub has recently been reglazed. Come and relax on your large lanai while enjoying beautiful views of Lake Wilson & tranquil greenery. Unit comes with TWO assigned parking stalls and ample guest parking. Its prime location offers easy access to Schofield Barracks, Wheeler Army Airfields, and is just minutes away from the world famous North Shore for quick beach getaways. All showings are by appointment only. Easy to show, schedule showing requests through ShowingTime. **Sale Conditions:** None **Schools:** , \* [Request Showing](#), [Photos](#), [History](#), [Maps](#), [Deed](#), [Watch List](#), [Tax Info](#)



Address	Price	Bd & Bth	Living / Avg.	Land   Avg.	DOM
<a href="#">1830 Wilikina Drive 505</a>	<b>\$380,000</b>	2 & 1/0	881   \$431	63,815   \$6	78

Address	Tax   Maint.   Ass.	Assessed Land	Assessed Building	Assessed Total	Ratio	Year & Remodeled
<a href="#">1830 Wilikina Drive 505</a>	\$72   \$774   \$0	\$81,300	\$272,600	\$353,900	107%	1972 & NA

[1830 Wilikina Drive 505](#) - MLS#: [202403254](#) - Original price was \$399,000 - Price Improvement!!! Welcome to Kemoo By The Lake! This spacious 881sf unit with two bedrooms and one bathroom is situated in a secure building and is an ideal find for first-time buyers or investors. This unit offers a spacious living area, lanai access from both bedrooms, in-unit washer and dryer, stainless steel appliances, and bathtub has recently been reglazed. Come and relax on your large lanai while enjoying beautiful views of Lake Wilson & tranquil greenery. Unit comes with TWO assigned parking stalls and ample guest parking. Its prime location offers easy access to Schofield Barracks, Wheeler Army Airfields, and is just minutes away from the world famous North Shore for quick beach getaways. All showings are by appointment only. Easy to show, schedule showing requests through ShowingTime. **Region:** Central **Neighborhood:** Wilikina **Condition:** Above Average, Average **Parking:** Assigned, Guest, Open - 2 **Total Parking:** 2 **View:** Sunrise **Frontage:** Lake/Pond **Pool:** **Zoning:** 12 - A-2 Medium Density Apartme **Sale Conditions:** None **Schools:** , , \* [Request Showing](#), [Photos](#), [History](#), [Maps](#), [Deed](#), [Watch List](#), [Tax Info](#)

DOM = Days on Market