

45-1016/45-101 Anoi Road, Kaneohe 96744 * \$1,850,000

Beds: **6**
Bath: **4/2**
Living Sq. Ft.: **3,588**
Land Sq. Ft.: **8,230**

Lanai Sq. Ft.: **0**
Sq. Ft. Other: **0**
Total Sq. Ft. **3,588**
Maint./Assoc. **\$0 / \$0**

Parking: **3 Car+, Carport, Driveway**

Zoning: 05 - R-5 Residential District

MLS#: **202403493, FS**

Status: **Active**

List Date & DOM: **02-13-2024 & 86**

Condition: **Excellent, Above Average**

Frontage:

Tax/Year: **\$500/2023**

Neighborhood: **Halekauwila**

Flood Zone: Zone X - Tool

Year Built: **1962**

Remodeled: **2019**

Total Parking: **4**

[Assessed Value](#)

Building: **\$408,300**

Land: **\$766,400**

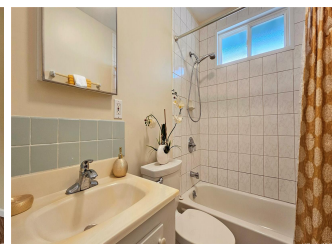
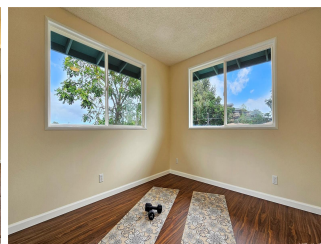
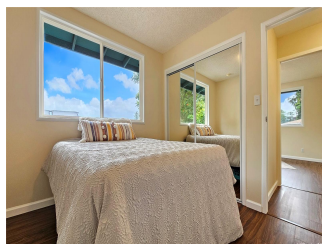
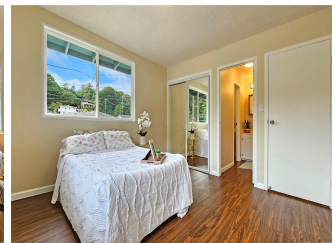
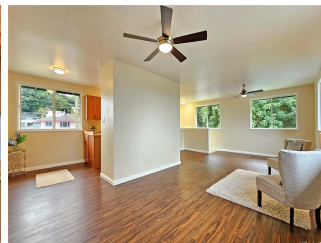
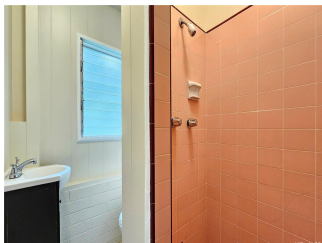
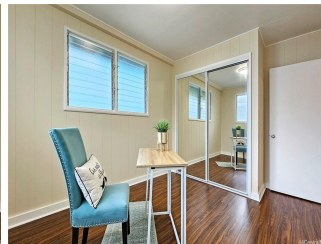
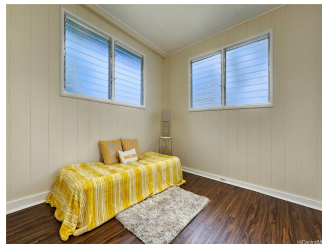
Total: **\$1,174,700**

Stories / CPR: **One, Two / No**

Frontage:

View: **Mountain**

Public Remarks: Seize an exceptional and rare chance to own two distinct living spaces on a single lot in the beautiful setting of Kaneohe. This opportunity is perfect for legal multi-family living or generating rental income, showcasing pride of ownership in both homes. Situated for utmost convenience, these residences are near freeway access, a variety of eateries, schools, and a shopping center. The first home presents a spacious design with 3 bedrooms, 2.5 bathrooms, and a large carport accommodating 3 cars, while the second mirrors this layout with room for 4 cars in its carport. Both homes are meticulously maintained. Featuring ample storage solutions and readiness for immediate move-in. Energy efficiency is prioritized with solar water heaters, and the generous yard space for gardening enthusiasts. The second residence boasts an external bathroom, ideal for hosting gatherings in the expansive lanai area. Located on a private lane, these homes promise tranquility and privacy. Offered in "As-is" condition. **Sale Conditions:** None **Schools:** [Kapunahala](#), [King](#), [Castle](#) * [Request Showing](#), [Photos](#), [History](#), [Maps](#), [Deed](#), [Watch List](#), [Tax Info](#)





Address	Price	Bd & Bth	Living / Avg.	Land Avg.	DOM
45-1016/45-101 Anoi Road	\$1,850,000	6 & 4/2	3,588 \$516	8,230 \$225	86

Address	Tax Maint. Ass.	Assessed Land	Assessed Building	Assessed Total	Ratio	Year & Remodeled
45-1016/45-101 Anoi Road	\$500 \$0 \$0	\$766,400	\$408,300	\$1,174,700	157%	1962 & 2019

[45-1016/45-101 Anoi Road](#) - MLS#: [202403493](#) - Seize an exceptional and rare chance to own two distinct living spaces on a single lot in the beautiful setting of Kaneohe. This opportunity is perfect for legal multi-family living or generating rental income, showcasing pride of ownership in both homes. Situated for utmost convenience, these residences are near freeway access, a variety of eateries, schools, and a shopping center. The first home presents a spacious design with 3 bedrooms, 2.5 bathrooms, and a large carport accommodating 3 cars, while the second mirrors this layout with room for 4 cars in its carport. Both homes are meticulously maintained. Featuring ample storage solutions and readiness for immediate move-in. Energy efficiency is prioritized with solar water heaters, and the generous yard space for gardening enthusiasts. The second residence boasts an external bathroom, ideal for hosting gatherings in the expansive lanai area, Located on a private lane, these homes promise tranquility and privacy. Offered in "As-is" condition. **Region:** Kaneohe **Neighborhood:** Halekauwila **Condition:** Excellent, Above Average **Parking:** 3 Car+, Carport, Driveway **Total Parking:** 4 **View:** Mountain **Frontage:** **Pool:** None **Zoning:** 05 - R-5 Residential District **Sale Conditions:** None **Schools:** [Kapunahala](#), [King](#), [Castle](#) * [Request Showing](#), [Photos](#), [History](#), [Maps](#), [Deed](#), [Watch List](#), [Tax Info](#)

DOM = Days on Market