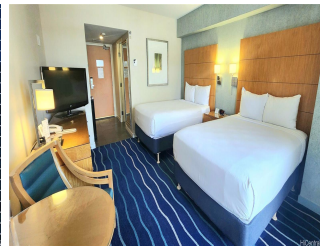


Ala Moana Hotel Condo 410 Atkinson Street Unit 2903, Honolulu 96814 * \$255,000

Beds: **0** MLS#: **202403595, FS** Year Built: **1970**
 Bath: **1/0** Status: **Active** Remodeled:
 Living Sq. Ft.: **297** List Date & DOM: **02-14-2024 & 92** Total Parking: **0**
 Land Sq. Ft.: **0** Condition: **Excellent** [Assessed Value](#)
 Lanai Sq. Ft.: **48** Frontage:
 Sq. Ft. Other: **0** Tax/Year: **\$278/2023** Building: **\$179,800**
 Total Sq. Ft. **345** Neighborhood: **Ala Moana** Land: **\$60,100**
 Maint./Assoc. **\$1,314 / \$0** [Flood Zone](#): **Zone AE - Tool** Total: **\$239,900**
 Parking: **None** Frontage:
[Zoning](#): **33 - BMX-3 Community Business M** View: **City, Mountain, Ocean, Sunset**

Public Remarks: A great investment opportunity for you in this beautiful turn key fully furnished studio in this Waikiki Tower Ala Moana Hotel condo. Conveniently located just minutes away from the Ala Moana Shopping Center and Beach Park, Waikiki and dining/shopping opportunities galore making this the ultimate retreat for your own vacation get-away. Enjoy the views from the comfort of your room or step out onto the lanai and take in the view of the mountain and city. Rent your unit through Mantra's full services which offers exceptional and seamless full service management. **Sale Conditions:** None **Schools:** , , * [Request Showing](#), [Photos](#), [History](#), [Maps](#), [Deed](#), [Watch List](#), [Tax Info](#)



Address	Price	Bd & Bth	Living / Avg.	Land Avg.	DOM
410 Atkinson Street 2903	\$255,000	0 & 1/0	297 \$859	0 \$inf	92

Address	Tax Maint. Ass.	Assessed Land	Assessed Building	Assessed Total	Ratio	Year & Remodeled
410 Atkinson Street 2903	\$278 \$1,314 \$0	\$60,100	\$179,800	\$239,900	106%	1970 & NA

[410 Atkinson Street 2903](#) - MLS#: [202403595](#) - A great investment opportunity for you in this beautiful turn key fully furnished studio in this Waikiki Tower Ala Moana Hotel condo. Conveniently located just minutes away from the Ala Moana Shopping Center and Beach Park, Waikiki and dining/shopping opportunities galore making this the ultimate retreat for your own vacation get-away. Enjoy the views from the comfort of your room or step out onto the lanai and take in the view of the mountain and city. Rent your unit through Mantra's full services which offers exceptional and seamless full service management. **Region:** Metro **Neighborhood:** Ala Moana **Condition:** Excellent **Parking:** None **Total Parking:** 0 **View:** City, Mountain, Ocean, Sunset **Frontage:** **Pool:** **Zoning:** 33 - BMX-3 Community Business M **Sale Conditions:** None **Schools:** , , * [Request Showing](#), [Photos](#), [History](#), [Maps](#), [Deed](#), [Watch List](#), [Tax Info](#)

DOM = Days on Market