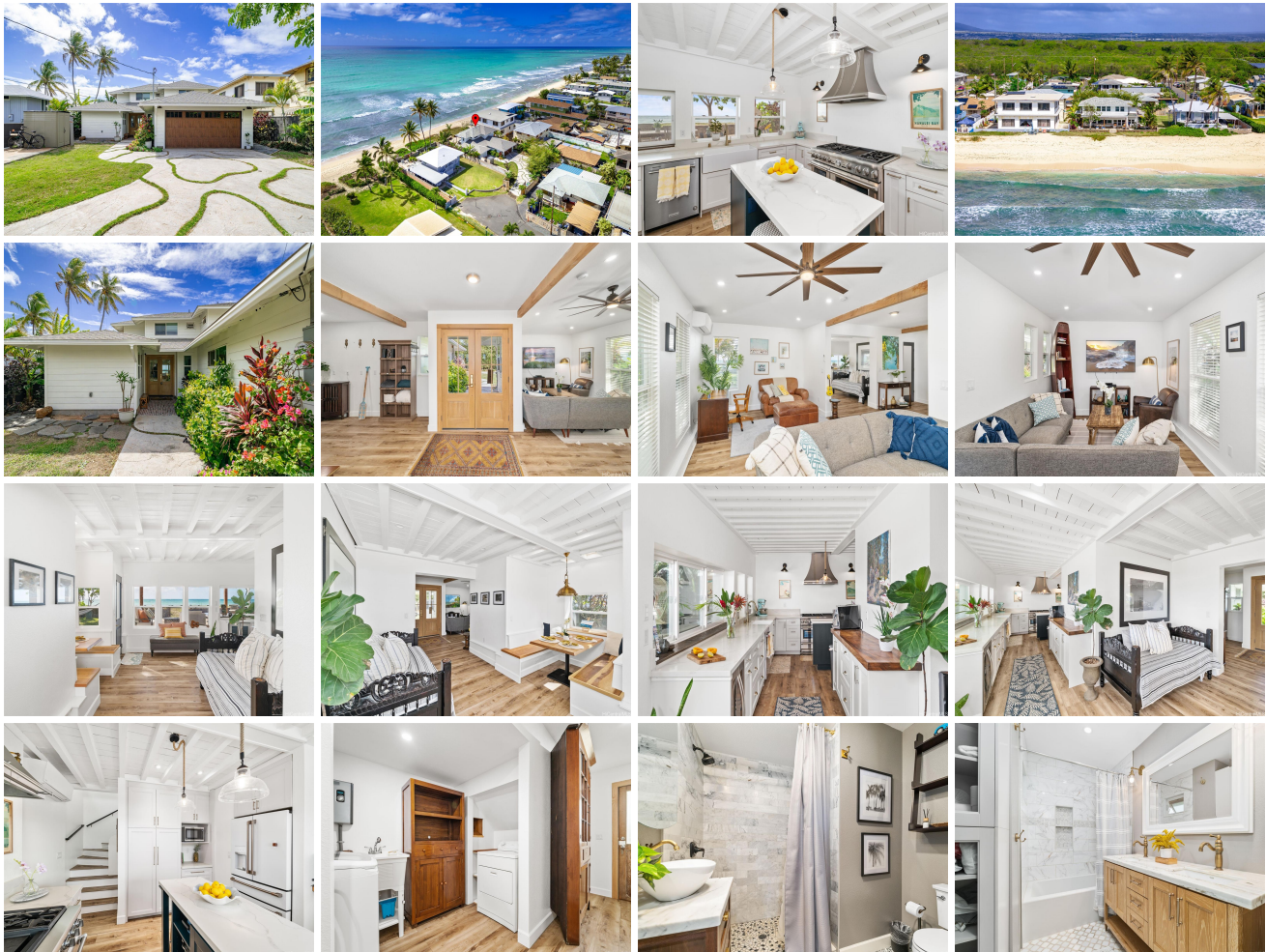


91-004 Nalomeli Place, Ewa Beach 96706 * \$1,825,000

Beds: 3	MLS#: 202403842, FS	Year Built: 2020
Bath: 2/0	Status: Active Under Contract	Remodeled: 2020
Living Sq. Ft.: 1,789	List Date & DOM: 02-28-2024 & 41	Total Parking: 4
Land Sq. Ft.: 7,190	Condition: Excellent, Above Average	Assessed Value
Lanai Sq. Ft.: 360	Frontage: Ocean, Sandy Beach, Waterfront	Building: \$362,700
Sq. Ft. Other: 0	Tax/Year: \$426/2024	Land: \$1,196,600
Total Sq. Ft. 2,149	Neighborhood: Ewa Beach	Total: \$1,559,300
Maint./Assoc. \$0 / \$0	Flood Zone : Zone XS - Tool	Stories / CPR: Two / No
Parking: 3 Car+, Driveway, Garage	Frontage: Ocean, Sandy Beach, Waterfront	View: Coastline, Ocean, Sunrise
Zoning : 05 - R-5 Residential District		

Public Remarks: Completely rebuilt beachfront paradise in Ewa Beach! Meticulously remodeled and expanded in 2020, this 3-bed, 2-bath gem allows one to experience the ultimate oceanfront lifestyle. With mesmerizing ocean and Diamond Head views, a full garage, and direct beach access, this home offers unbeatable value on Oahu's shoreline. Every detail has been thoughtfully designed and curated to today's style and look, from the elegant quartz counters and trending finishes to the chef's kitchen with massive thermador 6 burner stove and matching hood, to the custom laundry chute from upstairs straight to the laundry nook. Wake up to oceanfront bliss by the sound of the waves and step out onto the inviting sandy beach and savor sunsets from the lanai. With a large garage you can park securely and store your beach gear like kayaks, surfboards, and everything that makes beachfront sweet. This location is hard to beat, being just a short walk to the 360 Ewa Beach Country Club/Golf Course, Pu'uloa community beach park, and very close to the great Ewa amenities and shopping. Ready to experience paradise? Schedule your private showing today! **Sale Conditions:** None **Schools:** [Pohakea](#), [Ilima](#), [Campbell](#) * [Request Showing](#), [Photos](#), [History](#), [Maps](#), [Deed](#), [Watch List](#), [Tax Info](#)





Address	Price	Bd & Bth	Living / Avg.	Land Avg.	DOM
91-004 Nalomeli Place	\$1,825,000	3 & 2/0	1,789 \$1,020	7,190 \$254	41

Address	Tax Maint. Ass.	Assessed Land	Assessed Building	Assessed Total	Ratio	Year & Remodeled
91-004 Nalomeli Place	\$426 \$0 \$0	\$1,196,600	\$362,700	\$1,559,300	117%	2020 & 2020

[91-004 Nalomeli Place](#) - MLS#: [202403842](#) - Completely rebuilt beachfront paradise in Ewa Beach! Meticulously remodeled and expanded in 2020, this 3-bed, 2-bath gem allows one to experience the ultimate oceanfront lifestyle. With mesmerizing ocean and Diamond Head views, a full garage, and direct beach access, this home offers unbeatable value on Oahu's shoreline. Every detail has been thoughtfully designed and curated to today's style and look, from the elegant quartz counters and trending finishes to the chef's kitchen with massive thermador 6 burner stove and matching hood, to the custom laundry chute from upstairs straight to the laundry nook. Wake up to oceanfront bliss by the sound of the waves and step out onto the inviting sandy beach and savor sunsets from the lanai. With a large garage you can park securely and store your beach gear like kayaks, surfboards, and everything that makes beachfront sweet. This location is hard to beat, being just a short walk to the 360 Ewa Beach Country Club/Golf Course, Pu'uloa community beach park, and very close to the great Ewa amenities and shopping. Ready to experience paradise? Schedule your private showing today! **Region:** Ewa Plain **Neighborhood:** Ewa Beach **Condition:** Excellent, Above Average **Parking:** 3 Car+, Driveway, Garage **Total Parking:** 4 **View:** Coastline, Ocean, Sunrise **Frontage:** Ocean, Sandy Beach, Waterfront **Pool:** None **Zoning:** 05 - R-5 Residential District **Sale Conditions:** None **Schools:** [Pohakea](#), [Ilima](#), [Campbell](#) * [Request Showing](#), [Photos](#), [History](#), [Maps](#), [Deed](#), [Watch List](#), [Tax Info](#)

DOM = Days on Market