

Crosspointe 572 Mananai Place Unit 20A, Honolulu 96818 * \$689,000 * Originally \$669,000

Beds: **2**

MLS#: **202404167, FS**

Year Built: **1986**

Bath: **2/1**

Status: **Active Under Contract**

Remodeled:

Living Sq. Ft.: **1,005**

List Date & DOM: **03-06-2024 & 19**

Total Parking: **2**

Land Sq. Ft.: **117,089**

Condition: **Excellent, Above Average**

[Assessed Value](#)

Lanai Sq. Ft.: **0**

Frontage: **Other**

Building: **\$378,500**

Sq. Ft. Other: **0**

Tax/Year: **\$203/2023**

Land: **\$316,200**

Total Sq. Ft. **1,005**

Neighborhood: **Halawa**

Total: **\$694,700**

Maint./Assoc. **\$689 / \$0**

[Flood Zone](#): **Zone X - Tool**

Stories / CPR: **Two / No**

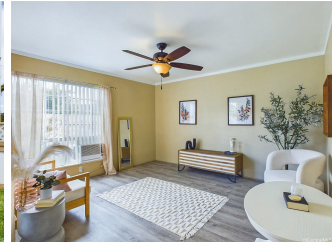
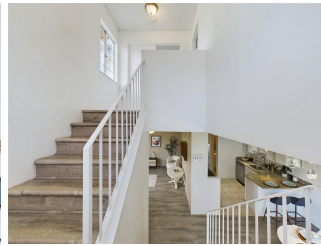
Parking: **Assigned, Guest**

Frontage: **Other**

[Zoning](#): **11 - A-1 Low Density Apartment**

View: **None**

Public Remarks: BACK ON THE MARKET!! Look no further, You've hit the jackpot! Nestled in the gated community of Crosspointe, this corner unit offers unparalleled comfort, privacy, and a unique advantage with no neighbors behind or above. What sets it apart even more is the rarity of finding a unit of this caliber at this price. Step inside to experience the blend of modern elegance and functionality, with upgraded floors and freshly painted kitchen cabinets enhancing the living and dining areas. The culinary space boasts a new range, new microwave, and new dishwasher. Complementing this is a full size washer & dryer with the added perk of a private yard, offering your own outdoor sanctuary. This condo offers ample space for comfortable living. Easy freeway access ensures seamless connections, making commuting a breeze. Charging your electric vehicle is made SIMPLE with the community's EV Charging Station! Beyond your personal oasis, Crosspointe situates you close to shopping malls, eateries, schools, and parks, creating a lifestyle of convenience and vibrancy. Don't miss this golden opportunity to make this corner unit your own. **Sale Conditions:** None **Schools:** , , * [Request Showing](#), [Photos](#), [History](#), [Maps](#), [Deed](#), [Watch List](#), [Tax Info](#)





Address	Price	Bd & Bth	Living / Avg.	Land Avg.	DOM
572 Mananai Place 20A	\$689,000	2 & 2/1	1,005 \$686	117,089 \$6	19

Address	Tax Maint. Ass.	Assessed Land	Assessed Building	Assessed Total	Ratio	Year & Remodeled
572 Mananai Place 20A	\$203 \$689 \$0	\$316,200	\$378,500	\$694,700	99%	1986 & NA

[572 Mananai Place 20A](#) - MLS#: [202404167](#) - Original price was \$669,000 - BACK ON THE MARKET!! Look no further, You've hit the jackpot! Nestled in the gated community of Crosspointe, this corner unit offers unparalleled comfort, privacy, and a unique advantage with no neighbors behind or above. What sets it apart even more is the rarity of finding a unit of this caliber at this price. Step inside to experience the blend of modern elegance and functionality, with upgraded floors and freshly painted kitchen cabinets enhancing the living and dining areas. The culinary space boasts a new range, new microwave, and new dishwasher. Complementing this is a full size washer & dryer with the added perk of a private yard, offering your own outdoor sanctuary. This condo offers ample space for comfortable living. Easy freeway access ensures seamless connections, making commuting a breeze. Charging your electric vehicle is made SIMPLE with the community's EV Charging Station! Beyond your personal oasis, Crosspointe situates you close to shopping malls, eateries, schools, and parks, creating a lifestyle of convenience and vibrancy. Don't miss this golden opportunity to make this corner unit your own.

Region: Pearl City **Neighborhood:** Halawa **Condition:** Excellent, Above Average **Parking:** Assigned, Guest **Total Parking:** 2 **View:** None **Frontage:** Other **Pool:** **Zoning:** 11 - A-1 Low Density Apartment **Sale Conditions:** None **Schools:** , , * [Request Showing](#), [Photos](#), [History](#), [Maps](#), [Deed](#), [Watch List](#), [Tax Info](#)

DOM = Days on Market