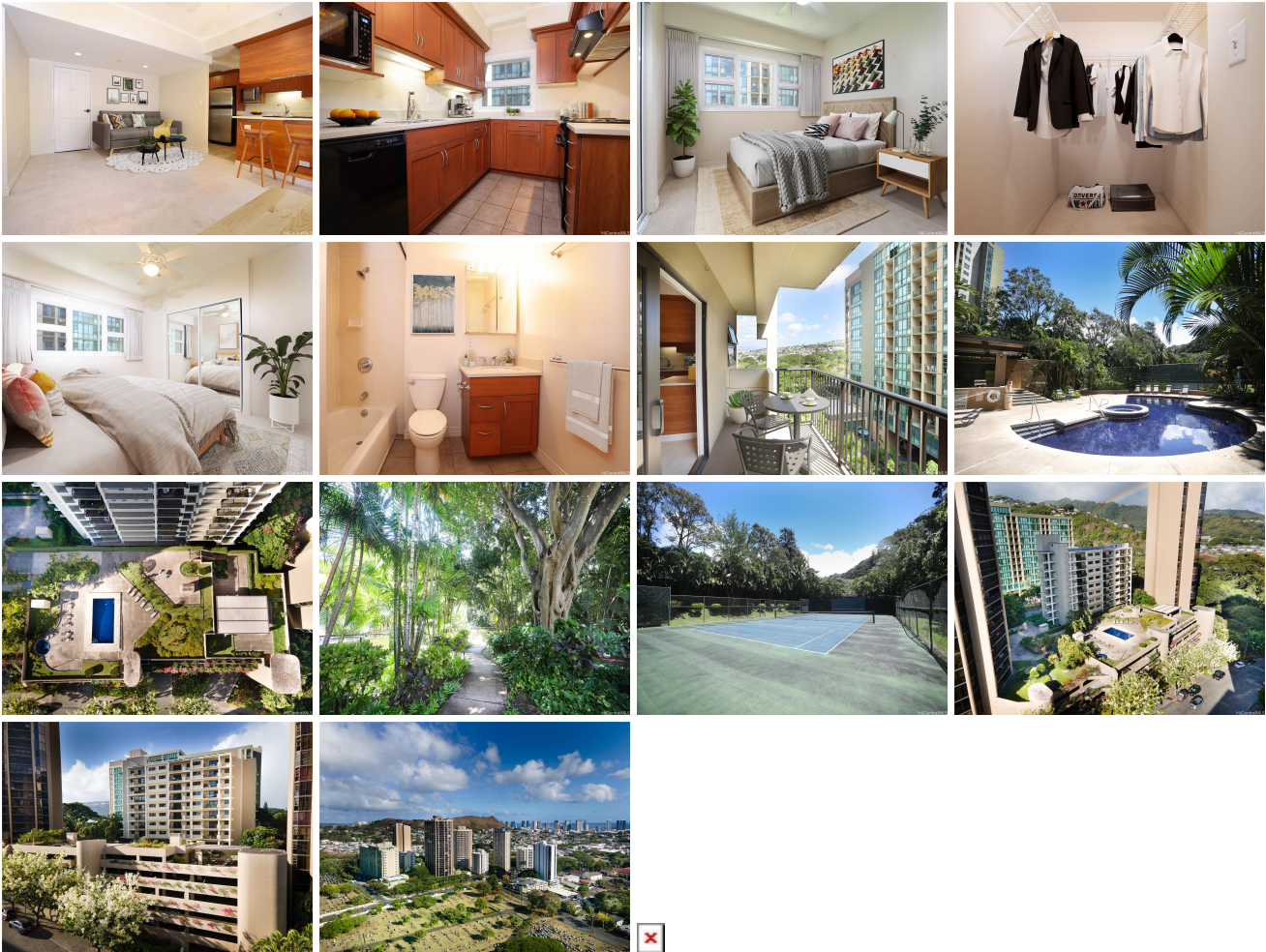


## **Craigside 21 Craigside Place Unit III/7A, Honolulu 96817 \* \$470,000**

Beds: <b>2</b>	MLS#: <b>202404267, FS</b>	Year Built: <b>1965</b>
Bath: <b>1/0</b>	Status: <b>Active Under Contract</b>	Remodeled:
Living Sq. Ft.: <b>830</b>	List Date & DOM: <b>03-08-2024 &amp; 49</b>	Total Parking: <b>1</b>
Land Sq. Ft.: <b>0</b>	Condition: <b>Above Average</b>	<a href="#">Assessed Value</a>
Lanai Sq. Ft.: <b>0</b>	Frontage: <b>Stream/Canal</b>	Building: <b>\$433,300</b>
Sq. Ft. Other: <b>0</b>	Tax/Year: <b>\$145/2024</b>	Land: <b>\$62,700</b>
Total Sq. Ft. <b>830</b>	Neighborhood: <b>Nuuanu-lower</b>	Total: <b>\$496,000</b>
Maint./Assoc. <b>\$1,169 / \$0</b>	<a href="#">Flood Zone</a> : <b>Zone X,Zon - Tool</b>	Stories / CPR: <b>8-14 / No</b>
Parking: <b>Assigned, Covered - 1, Garage, Guest, Secured Entry</b>	Frontage: <b>Stream/Canal</b>	
<a href="#">Zoning</a> : <b>13 - A-3 High Density Apartment</b>	View: <b>Cemetery, Garden</b>	

**Public Remarks:** Nestled within the historic Nu'uano neighborhood, this two bedroom, single level unit looks out beyond the treetops while enjoying the cool breezes. Craigside III is conveniently located and close to Pali Hwy and H1. This unit features a covered lanai, split a/c, dishwasher, and in-unit washer and dryer. Included with the unit is a large storage unit more than 10 feet in height and a covered parking stall within a private garage. In addition to the unit's features, you have access to the Craigside association's luxury amenities: two pools, jacuzzi, fitness center, sauna, bbq areas, and tennis courts, security and site manager. Pet-friendly, please verify. Some photos have been virtually staged. **Sale Conditions:** None **Schools:** , , \* [Request Showing](#), [Photos](#), [History](#), [Maps](#), [Deed](#), [Watch List](#), [Tax Info](#)



Address	Price	Bd & Bth	Living / Avg.	Land   Avg.	DOM
<a href="#">21 Craigside Place III/7A</a>	<a href="#">\$470,000</a>	2 & 1/0	830   \$566	0   \$inf	49

Address	Tax   Maint.   Ass.	Assessed Land	Assessed Building	Assessed Total	Ratio	Year & Remodeled
<a href="#">21 Craigside Place III/7A</a>	\$145   \$1,169   \$0	\$62,700	\$433,300	\$496,000	95%	1965 & NA

[21 Craigsides Place III/7A](#) - MLS#: [202404267](#) - Nestled within the historic Nu'uuanu neighborhood, this two bedroom, single level unit looks out beyond the treetops while enjoying the cool breezes. Craigsides III is conveniently located and close to Pali Hwy and H1. This unit features a covered lanai, split a/c, dishwasher, and in-unit washer and dryer. Included with the unit is a large storage unit more than 10 feet in height and a covered parking stall within a private garage. In addition to the unit's features, you have access to the Craigsides association's luxury amenities: two pools, jacuzzi, fitness center, sauna, bbq areas, and tennis courts, security and site manager. Pet-friendly, please verify. Some photos have been virtually staged.

**Region:** Metro **Neighborhood:** Nuuanu-lower **Condition:** Above Average **Parking:** Assigned, Covered - 1, Garage, Guest, Secured Entry **Total Parking:** 1 **View:** Cemetery, Garden **Frontage:** Stream/Canal **Pool:** **Zoning:** 13 - A-3 High Density Apartment **Sale Conditions:** None **Schools:** , , \* [Request Showing](#), [Photos](#), [History](#), [Maps](#), [Deed](#), [Watch List](#), [Tax Info](#)

DOM = Days on Market