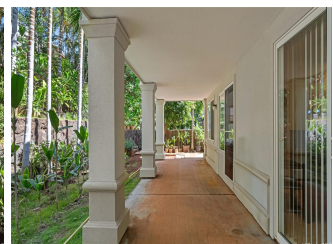
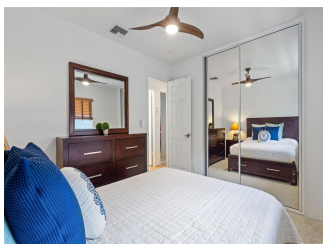
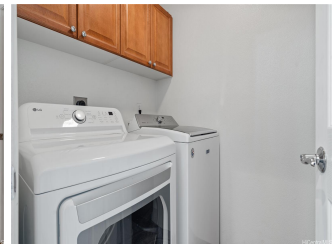
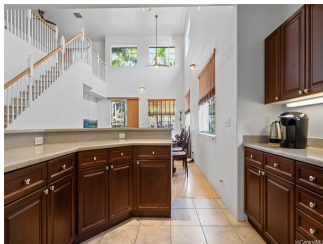


91-1444 Wahane Street, Kapolei 96707 * \$1,465,000 * Originally \$1,480,000

Beds: 4	MLS#: 202404331, FS	Year Built: 2005
Bath: 2/1	Status: Active	Remodeled:
Living Sq. Ft.: 2,690	List Date & DOM: 03-01-2024 & 70	Total Parking: 4
Land Sq. Ft.: 6,000	Condition: Above Average	Assessed Value
Lanai Sq. Ft.: 0	Frontage:	Building: \$634,400
Sq. Ft. Other: 0	Tax/Year: \$384/2024	Land: \$682,500
Total Sq. Ft. 2,690	Neighborhood: Kapolei Knolls	Total: \$1,316,900
Maint./Assoc. \$0 / \$65	Flood Zone : Zone D - Tool	Stories / CPR: Two / No
Parking: 2 Car, Driveway, Garage	Frontage:	
Zoning : 05 - R-5 Residential District	View: Garden, Mountain	

Public Remarks: Experience remarkable value with a \$15,000 price improvement plus an additional \$15,000 Seller's credit! Welcome to your new haven in Kapolei Knolls! Lovingly maintained by its original owners, this highly sought-after Opus model boasts unparalleled craftsmanship with 2,690sf of interior living space on a 6,000sf lot, 4 bdrms, 2.5 baths - the perfect floor plan for entertaining family and friends. From the moment you arrive and step inside, you'll be captivated by the seamless flow and inviting ambiance of this Opus model. Its spacious layout offers ample room for gatherings, whether hosting intimate dinners or grand celebrations. This exceptional residence features stucco finished exterior walls, durable Monier roof, and 35-panel PV system. Recent upgrades include newly painted exterior, new central A/C system and water heater and much more. Immerse yourself in the serenity of this wonderful neighborhood while enjoying the convenience of nearby amenities. Don't miss out on this opportunity to own luxury living in Kapolei Knolls. Schedule your private showing today your new lifestyle awaits! **Sale Conditions:** None **Schools:** [Kapolei](#), [Kapolei](#), [Kapolei](#) * [Request Showing](#), [Photos](#), [History](#), [Maps](#), [Deed](#), [Watch List](#), [Tax Info](#)





Address	Price	Bd & Bth	Living / Avg.	Land Avg.	DOM
91-1444 Wahane Street	\$1,465,000	4 & 2/1	2,690 \$545	6,000 \$244	70

Address	Tax Maint. Ass.	Assessed Land	Assessed Building	Assessed Total	Ratio	Year & Remodeled
91-1444 Wahane Street	\$384 \$0 \$65	\$682,500	\$634,400	\$1,316,900	111%	2005 & NA

[91-1444 Wahane Street](#) - MLS#: [202404331](#) - Original price was \$1,480,000 - Experience remarkable value with a \$15,000 price improvement plus an additional \$15,000 Seller's credit! Welcome to your new haven in Kapolei Knolls! Lovingly maintained by its original owners, this highly sought-after Opus model boasts unparalleled craftsmanship with 2,690sf of interior living space on a 6,000sf lot, 4 bdrms, 2.5 baths - the perfect floor plan for entertaining family and friends. From the moment you arrive and step inside, you'll be captivated by the seamless flow and inviting ambiance of this Opus model. Its spacious layout offers ample room for gatherings, whether hosting intimate dinners or grand celebrations. This exceptional residence features stucco finished exterior walls, durable Monier roof, and 35-panel PV system. Recent upgrades include newly painted exterior, new central A/C system and water heater and much more. Immerse yourself in the serenity of this wonderful neighborhood while enjoying the convenience of nearby amenities. Don't miss out on this opportunity to own luxury living in Kapolei Knolls. Schedule your private showing today your new lifestyle awaits! **Region:** Ewa Plain **Neighborhood:** Kapolei Knolls **Condition:** Above Average **Parking:** 2 Car, Driveway, Garage **Total Parking:** 4 **View:** Garden, Mountain **Frontage:** **Pool:** None **Zoning:** 05 - R-5 Residential District **Sale Conditions:** None **Schools:** [Kapolei](#), [Kapolei](#), [Kapolei](#) * [Request Showing](#), [Photos](#), [History](#), [Maps](#), [Deed](#), [Watch List](#), [Tax Info](#)

DOM = Days on Market