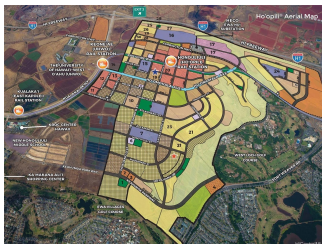
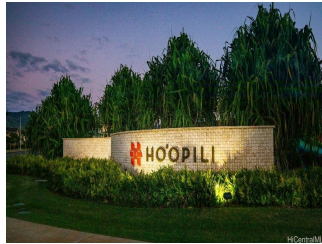


NA 91-1883 Kapeku Loop Unit Lot 43, Ewa Beach 96706 * \$922,655

Beds: 3	MLS#: 202404335, FS	Year Built: 2024
Bath: 2/0	Status: Pending	Remodeled:
Living Sq. Ft.: 1,219	List Date & DOM: 02-27-2024 & 35	Total Parking: 2
Land Sq. Ft.: 4,686	Condition: Excellent	Assessed Value
Lanai Sq. Ft.: 64	Frontage:	Building: \$0
Sq. Ft. Other: 80	Tax/Year: \$0/2024	Land: \$0
Total Sq. Ft. 1,363	Neighborhood: Hoopili-kanalani	Total: \$0
Maint./Assoc. \$0 / \$78	Flood Zone : Zone D - Tool	Stories / CPR: One / No
Parking: 2 Car	Frontage:	
Zoning : 07 - R-3.5 Residential District	View: None	

Public Remarks: This popular single-level Canoe plan features a welcoming front covered lanai and 1,219 sq. ft. of living area, 3 bedrooms and 2 bathrooms. The bright, wide open living room and dining area with vinyl plank flooring flows into the modern kitchen with white soft-close cabinets, solid surface countertops, a Kohler® single basin sink and stainless-steel range/oven, micro-hood and dishwasher. The spacious, sit-down peninsula counter creates a casual and inviting atmosphere that's perfect for family or entertaining. The home includes a Family Drop Zone tech area off the living room, complete with USB outlets. The primary bedroom boasts a large walk-in closet, plush carpeting and en-suite bathroom with dual sinks, solid surface countertop and a step-in shower. Tucked away at the end of the hall are the two secondary bedrooms with mirrored wardrobe doors and the second bathroom with a combination tub/shower for family or guests. The rear covered lanai and backyard offer a great place to relax at the end of the day. Home comes with the Kanalani + Warm Package Upgrade. **Sale Conditions:** None **Schools:** [Ewa Beach](#), [Honouliuli](#), [Kapolei](#) * [Request Showing](#), [Photos](#), [History](#), [Maps](#), [Deed](#), [Watch List](#), [Tax Info](#)



Address	Price	Bd & Bth	Living / Avg.	Land Avg.	DOM
91-1883 Kapeku Loop Lot 43	\$922,655	3 & 2/0	1,219 \$757	4,686 \$197	35

Address	Tax Maint. Ass.	Assessed Land	Assessed Building	Assessed Total	Ratio	Year & Remodeled
91-1883 Kapeku Loop Lot 43	\$0 \$0 \$78	\$0	\$0	\$0	inf%	2024 & NA

91-1883 Kapeku Loop Lot 43 - MLS#: 202404335 - This popular single-level Canoe plan features a welcoming front covered lanai and 1,219 sq. ft. of living area, 3 bedrooms and 2 bathrooms. The bright, wide open living room and dining area with vinyl plank flooring flows into the modern kitchen with white soft-close cabinets, solid surface countertops, a Kohler® single basin sink and stainless-steel range/oven, micro-hood and dishwasher. The spacious, sit-down peninsula counter creates a casual and inviting atmosphere that's perfect for family or entertaining. The home includes a Family Drop Zone tech area off the living room, complete with USB outlets. The primary bedroom boasts a large walk-in closet, plush carpeting and en-suite bathroom with dual sinks, solid surface countertop and a step-in shower. Tucked away at the end of the hall are the two secondary bedrooms with mirrored wardrobe doors and the second bathroom with a combination tub/shower for family or guests. The rear covered lanai and backyard offer a great place to relax at the end of the day. Home comes with the Kanalani + Warm Package Upgrade. Region: Ewa Plain Neighborhood: Hoopili-kanalani Condition: Excellent Parking: 2 Car Total Parking: 2 View: None Frontage: Pool: Community Association Pool Zoning: 07 - R-3.5 Residential District Sale Conditions: None Schools: Ewa Beach , Honouliuli , Kapolei * Request Showing , Photos , History , Maps , Deed , Watch List , Tax Info

DOM = Days on Market