

## **Lele Pono 98-099 Uao Place Unit 2610, Aiea 96701 \* \$539,900 \* Originally \$549,000**

Beds: **2**

MLS#: **202404494, FS**

Year Built: **1976**

Bath: **2/0**

Status: **Active Under Contract**

Remodeled: **2024**

Living Sq. Ft.: **792**

List Date & DOM: **03-04-2024 & 59**

Total Parking: **2**

Land Sq. Ft.: **93,785**

Condition: **Excellent**

[Assessed Value](#)

Lanai Sq. Ft.: **144**

Frontage:

Building: **\$497,900**

Sq. Ft. Other: **0**

Tax/Year: **\$159/2023**

Land: **\$47,800**

Total Sq. Ft. **936**

Neighborhood: **Pearlridge**

Total: **\$545,700**

Maint./Assoc. **\$731 / \$0**

[Flood Zone](#): **Zone X - Tool**

Stories / CPR: **21+ / No**

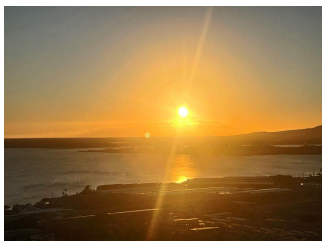
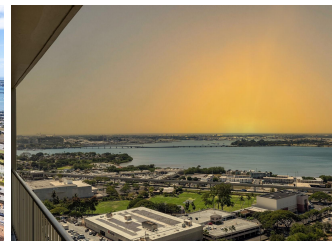
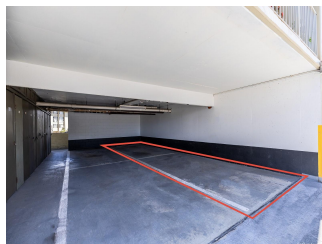
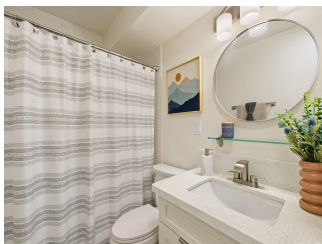
Parking: **Covered - 2, Tandem**

Frontage:

[Zoning](#): **12 - A-2 Medium Density Apartme**

View: **Coastline, Mountain, Ocean**

**Public Remarks:** Welcome home to this completely renovated unit at the Lele Pono. This beautifully upgraded 2-bed, 2-bath end unit was completely remodeled with luxury vinyl plank flooring, new cabinets, new quartz counters, new bathrooms, new appliances, and more. Access your huge lanai from either the primary bedroom or the living room, and take in the views of Pearl Harbor and the beautiful sunsets. Enjoy the enhanced security and quietness of new double pane windows replacing the jalousie windows, as well as a new video doorbell camera. A tandem covered parking stall is just steps from the building entrance. Lele Pono is convenient - just across the street from Pearlridge Mall, with quick access to the H-1 freeway, Pearl Harbor, schools, banks, Pali Momi Hospital, golfing, a new Skyline rail station, bus routes, restaurants and other nearby businesses. This gated community is pet-friendly (verify), well-maintained, and offers security, an onsite manager, ample guest parking, a spacious pool area, and a convenient storage locker right by the parking stall. Fire safety components have recently been installed in each condo unit to enhance occupant's safety. Don't miss it! **Sale Conditions:** None **Schools:** , , \* [Request Showing](#), [Photos](#), [History](#), [Maps](#), [Deed](#), [Watch List](#), [Tax Info](#)



Address	Price	Bd & Bth	Living / Avg.	Land   Avg.	DOM
<a href="#">98-099 Uao Place 2610</a>	<b>\$539,900</b>	2 & 2/0	792   \$682	93,785   \$6	59

Address	Tax   Maint.   Ass.	Assessed Land	Assessed Building	Assessed Total	Ratio	Year & Remodeled
<a href="#">98-099 Uao Place 2610</a>	\$159   \$731   \$0	\$47,800	\$497,900	\$545,700	99%	1976 & 2024

<a href="#">98-099 Uao Place 2610</a> - MLS#: <a href="#">202404494</a> - Original price was \$549,000 - Welcome home to this completely renovated unit at the Lele Pono. This beautifully upgraded 2-bed, 2-bath end unit was completely remodeled with luxury vinyl plank flooring, new cabinets, new quartz counters, new bathrooms, new appliances, and more. Access your huge lanai from either the primary bedroom or the living room, and take in the views of Pearl Harbor and the beautiful sunsets. Enjoy the enhanced security and quietness of new double pane windows replacing the jalousie windows, as well as a new video doorbell camera. A tandem covered parking stall is just steps from the building entrance. Lele Pono is convenient - just across the street from Pearlridge Mall, with quick access to the H-1 freeway, Pearl Harbor, schools, banks, Pali Momi Hospital, golfing, a new Skyline rail station, bus routes, restaurants and other nearby businesses. This gated community is pet-friendly (verify), well-maintained, and offers security, an onsite manager, ample guest parking, a spacious pool area, and a convenient storage locker right by the parking stall. Fire safety components have recently been installed in each condo unit to enhance occupant's safety. Don't miss it! <b>Region:</b> Pearl City <b>Neighborhood:</b> Pearlridge <b>Condition:</b> Excellent <b>Parking:</b> Covered - 2, Tandem <b>Total Parking:</b> 2 <b>View:</b> Coastline, Mountain, Ocean <b>Frontage:</b> <b>Pool:</b> <b>Zoning:</b> 12 - A-2 Medium Density Apartme <b>Sale Conditions:</b> None <b>Schools:</b> , , * <a href="#">Request Showing</a> , <a href="#">Photos</a> , <a href="#">History</a> , <a href="#">Maps</a> , <a href="#">Deed</a> , <a href="#">Watch List</a> , <a href="#">Tax Info</a>
--

DOM = Days on Market