

1438 Mapuana Place, Kailua 96734 * \$1,438,000

Beds: **3**

MLS#: **202404509, FS**

Year Built: **1960**

Bath: **2/0**

Status: **Active Under Contract**

Remodeled: **1990**

Living Sq. Ft.: **1,428**

List Date & DOM: **03-20-2024 & 28**

Total Parking: **3**

Land Sq. Ft.: **9,177**

Condition: **Above Average**

[Assessed Value](#)

Lanai Sq. Ft.: **0**

Frontage:

Building: **\$515,500**

Sq. Ft. Other: **600**

Tax/Year: **\$889/2023**

Land: **\$1,069,100**

Total Sq. Ft. **2,028**

Neighborhood: **Keolu Hills**

Total: **\$1,584,600**

Maint./Assoc. **\$0 / \$0**

[Flood Zone:](#) **Zone X - Tool**

Stories / CPR: **One / No**

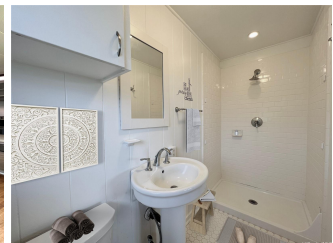
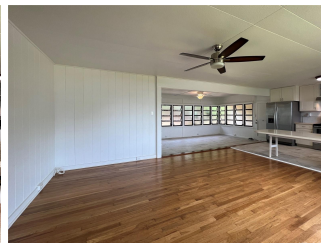
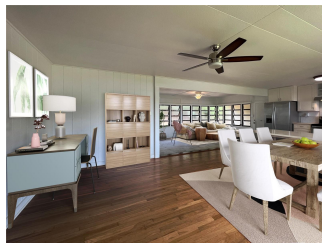
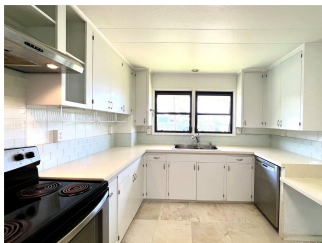
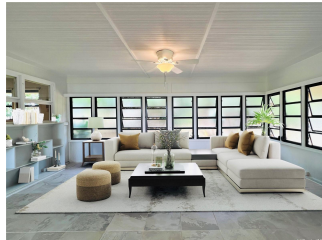
Parking: **2 Car, Carport, Driveway, Street**

Frontage:

[Zoning:](#) **04 - R-7.5 Residential District**

View: **City, Coastline, Garden**

Public Remarks: This is the idyllic retreat you have been waiting for: a delightful single-level home located on a cul-de-sac, w/ large level lot! Come home to it's spacious backyard and open floor plan. There is over 9,000 sqft to garden, expand, or maybe build a tree house in one of its two prized mango trees. Step inside this cool coastal charmer, with vintage touches and become transported to a slower time, where classic island living is easy. Large quartz eat-in counter opens up to an a bright and airy enclosed lanai, accentuated by original hardwood floors. The flexible floor plan and ample built-ins are perfect for game nights, crafts, or just to display your favorite collections. Take in Fourth of July views from your kitchen window, and a peek-a-boo horizon view is a reminder that a short drive will bring you to the finest beaches. Imagine festive celebrations or choosing to just hang out in your private backyard. This home offers the space to meet your needs with ample carport storage for recreation, DIY projects, or ocean sports. A dedicated workshop area provides the perfect place for creative hobbies & tinkering -- or finally organize your stuff! **Sale Conditions:** None **Schools:** , [Kailua](#), [Kalaheo](#) * [Request Showing](#), [Photos](#), [History](#), [Maps](#), [Deed](#), [Watch List](#), [Tax Info](#)





Address	Price	Bd & Bth	Living / Avg.	Land Avg.	DOM
1438 Mapuana Place	\$1,438,000	3 & 2/0	1,428 \$1,007	9,177 \$157	28

Address	Tax Maint. Ass.	Assessed Land	Assessed Building	Assessed Total	Ratio	Year & Remodeled
1438 Mapuana Place	\$889 \$0 \$0	\$1,069,100	\$515,500	\$1,584,600	91%	1960 & 1990

[1438 Mapuana Place](#) - MLS#: [202404509](#) - This is the idyllic retreat you have been waiting for: a delightful single-level home located on a cul-de-sac, w/ large level lot! Come home to it's spacious backyard and open floor plan. There is over 9,000 sqft to garden, expand, or maybe build a tree house in one of its two prized mango trees. Step inside this cool coastal charmer, with vintage touches and become transported to a slower time, where classic island living is easy. Large quartz eat-in counter opens up to an a bright and airy enclosed lanai, accentuated by original hardwood floors. The flexible floor plan and ample built-ins are perfect for game nights, crafts, or just to display your favorite collections. Take in Fourth of July views from your kitchen window, and a peek-a-boo horizon view is a reminder that a short drive will bring you to the finest beaches. Imagine festive celebrations or choosing to just hang out in your private backyard. This home offers the space to meet your needs with ample carport storage for recreation, DIY projects, or ocean sports. A dedicated workshop area provides the perfect place for creative hobbies & tinkering -- or finally organize your stuff! **Region:** Kailua **Neighborhood:** Keolu Hills **Condition:** Above Average **Parking:** 2 Car, Carport, Driveway, Street **Total Parking:** 3 **View:** City, Coastline, Garden **Frontage:** **Pool:** None **Zoning:** 04 - R-7.5 Residential District **Sale Conditions:** None **Schools:** , [Kailua](#), [Kalaheo](#) * [Request Showing](#), [Photos](#), [History](#), [Maps](#), [Deed](#), [Watch List](#), [Tax Info](#)

DOM = Days on Market