

98-1901 Kaahumanu Street Unit H, Aiea 96701 * \$1,010,000 * Originally \$1,035,000

Beds: **4**

MLS#: **202404701, FS**

Year Built: **1988**

Bath: **2/1**

Status: **Active Under Contract**

Remodeled:

Living Sq. Ft.: **1,317**

List Date & DOM: **03-04-2024 & 60**

Total Parking: **4**

Land Sq. Ft.: **3,340**

Condition: **Above Average**

[Assessed Value](#)

Lanai Sq. Ft.: **0**

Frontage:

Building: **\$258,400**

Sq. Ft. Other: **0**

Tax/Year: **\$277/2023**

Land: **\$692,000**

Total Sq. Ft. **1,317**

Neighborhood: **Wailuna**

Total: **\$950,400**

Maint./Assoc. **\$561 / \$78**

[Flood Zone](#): **Zone D - Tool**

Stories / CPR: **Two / Yes**

Parking: **2 Car, Driveway, Garage**

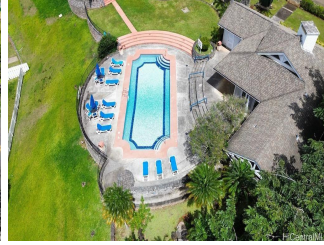
Frontage:

[Zoning](#): **11 - A-1 Low Density Apartment**

View: **None**

Public Remarks: Discover the opportunity to own a slice of paradise in the coveted Crest At Wailuna community, where a move-in ready single-family home awaits you. This rare gem, nestled in a serene area, offers a blend of privacy, security, and tranquility. With its spacious layout featuring 4 bedrooms and 3 baths, this home is a haven of comfort and style. Imagine waking up and unwinding in the evening with stunning mountain vistas at the back. Each room is equipped with split A/C units for your comfort. The functional floor plan includes 3 bedrooms and 2 baths on the second floor, along with a versatile ground-floor bedroom and full bath, perfect for a home office or in-law suite. Living in Wailuna means enjoying access to exclusive amenities such as three recreation centers, pools, hot tubs, tennis courts, playgrounds, and party rental facilities. Located in Pearl City, this home is conveniently close to shopping, schools, parks, and freeway access, making your daily commute a breeze. Don't let this incredible opportunity pass you by—embrace the lifestyle you've been dreaming of in Wailuna **Sale Conditions:** None **Schools:** , , * [Request Showing](#), [Photos](#), [History](#), [Maps](#), [Deed](#), [Watch List](#), [Tax Info](#)





Address	Price	Bd & Bth	Living / Avg.	Land Avg.	DOM
98-1901 Kaahumanu Street H	\$1,010,000	4 & 2/1	1,317 \$767	3,340 \$302	60

Address	Tax Maint. Ass.	Assessed Land	Assessed Building	Assessed Total	Ratio	Year & Remodeled
98-1901 Kaahumanu Street H	\$277 \$561 \$78	\$692,000	\$258,400	\$950,400	106%	1988 & NA

[98-1901 Kaahumanu Street H](#) - MLS#: [202404701](#) - Original price was \$1,035,000 - Discover the opportunity to own a slice of paradise in the coveted Crest At Wailuna community, where a move-in ready single-family home awaits you. This rare gem, nestled in a serene area, offers a blend of privacy, security, and tranquility. With its spacious layout featuring 4 bedrooms and 3 baths, this home is a haven of comfort and style. Imagine waking up and unwinding in the evening with stunning mountain vistas at the back. Each room is equipped with split A/C units for your comfort. The functional floor plan includes 3 bedrooms and 2 baths on the second floor, along with a versatile ground-floor bedroom and full bath, perfect for a home office or in-law suite. Living in Wailuna means enjoying access to exclusive amenities such as three recreation centers, pools, hot tubs, tennis courts, playgrounds, and party rental facilities. Located in Pearl City, this home is conveniently close to shopping, schools, parks, and freeway access, making your daily commute a breeze. Don't let this incredible opportunity pass you by—embrace the lifestyle you've been dreaming of in Wailuna **Region:** Pearl City **Neighborhood:** Wailuna **Condition:** Above Average **Parking:** 2 Car, Driveway, Garage **Total Parking:** 4 **View:** None **Frontage:** **Pool:** Community Association Pool **Zoning:** 11 - A-1 Low Density Apartment **Sale Conditions:** None **Schools:** , , * [Request Showing](#), [Photos](#), [History](#), [Maps](#), [Deed](#), [Watch List](#), [Tax Info](#)

DOM = Days on Market