

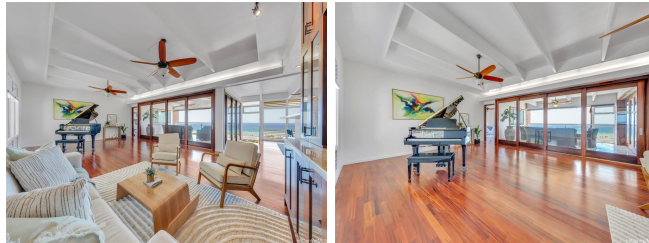
1404 Kamole Place, Honolulu 96821 * \$3,495,000

Beds: 5	MLS#: 202406119, FS	Year Built: 1966
Bath: 4/0	Status: Active	Remodeled:
Living Sq. Ft.: 4,007	List Date & DOM: 03-25-2024 & 44	Total Parking: 6
Land Sq. Ft.: 8,846	Condition: Excellent	Assessed Value
Lanai Sq. Ft.: 0	Frontage:	Building: \$175,700
Sq. Ft. Other: 441	Tax/Year: \$993/2023	Land: \$1,518,300
Total Sq. Ft. 4,448	Neighborhood: Waiialae Iki	Total: \$1,694,000
Maint./Assoc. \$0 / \$0	Flood Zone : Zone X - Tool	Stories / CPR: Two / No
Parking: 3 Car+, Carport, Driveway	Frontage:	

Zoning: 04 - R-7.5 Residential District

View: **Coastline, Diamond Head, Golf Course, Ocean, Sunrise, Sunset**

Public Remarks: The Island Dream of peaceful luxury and panoramic views of the Pacific Ocean awaits you. Rarely available, nestled in the heart of Waiālae Iki, this stunning executive home is situated on a cul-de-sac and offers 5-bedrooms with multiple lounge & living spaces to relax in, complete with hardwood floors and floor-to-ceiling custom built-in cabinetry made of exotic hardwood. The primary bedroom provides gorgeous scenic views of the ocean from your bedside window, and large windows throughout the property let in the shimmering golden light of Hawaii sunrises and sunsets every single day. A seamless transition from indoors to outdoors welcomes you to a refreshing pool with stone sundeck where you can lounge in quiet meditation under the graceful leaves of the surrounding palms. Sitting high above its neighboring properties, this 8,846 sq. ft. lot guarantees both the benefits of unobstructed views, and privacy with its secured gate entry. A rare and precious gem, just minutes away from the best beaches, shopping, golfing, and parks that Oahu has to offer... island living is made easy here. **Sale Conditions:** None **Schools:** , * [Request Showing](#), [Photos](#), [History](#), [Maps](#), [Deed](#), [Watch List](#), [Tax Info](#)



Address	Price	Bd & Bth	Living / Avg.	Land Avg.	DOM
1404 Kamole Place	\$3,495,000	5 & 4/0	4,007 \$872	8,846 \$395	44

Address	Tax Maint. Ass.	Assessed Land	Assessed Building	Assessed Total	Ratio	Year & Remodeled
1404 Kamole Place	\$993 \$0 \$0	\$1,518,300	\$175,700	\$1,694,000	206%	1966 & NA

1404 Kamole Place - MLS#: **202406119** - The Island Dream of peaceful luxury and panoramic views of the Pacific Ocean awaits you. Rarely available, nestled in the heart of Waialae Iki, this stunning executive home is situated on a cul-de-sac and offers 5-bedrooms with multiple lounge & living spaces to relax in, complete with hardwood floors and floor-to-ceiling custom built-in cabinetry made of exotic hardwood. The primary bedroom provides gorgeous scenic views of the ocean from your bedside window, and large windows throughout the property let in the shimmering golden light of Hawaii sunrises and sunsets every single day. A seamless transition from indoors to outdoors welcomes you to a refreshing pool with stone sundeck where you can lounge in quiet meditation under the graceful leaves of the surrounding palms. Sitting high above its neighboring properties, this 8,846 sq. ft. lot guarantees both the benefits of unobstructed views, and privacy with its secured gate entry. A rare and precious gem, just minutes away from the best beaches, shopping, golfing, and parks that Oahu has to offer... island living is made easy here. **Region:** Diamond Head **Neighborhood:** Waialae Iki **Condition:** Excellent **Parking:** 3 Car+, Carport, Driveway **Total Parking:** 6 **View:** Coastline, Diamond Head, Golf Course, Ocean, Sunrise, Sunset **Frontage:** Pool: In Ground, Tile, Pool on Property **Zoning:** 04 - R-7.5 Residential District **Sale Conditions:** None **Schools:** , ,
* [Request Showing](#), [Photos](#), [History](#), [Maps](#), [Deed](#), [Watch List](#), [Tax Info](#)

DOM = Days on Market