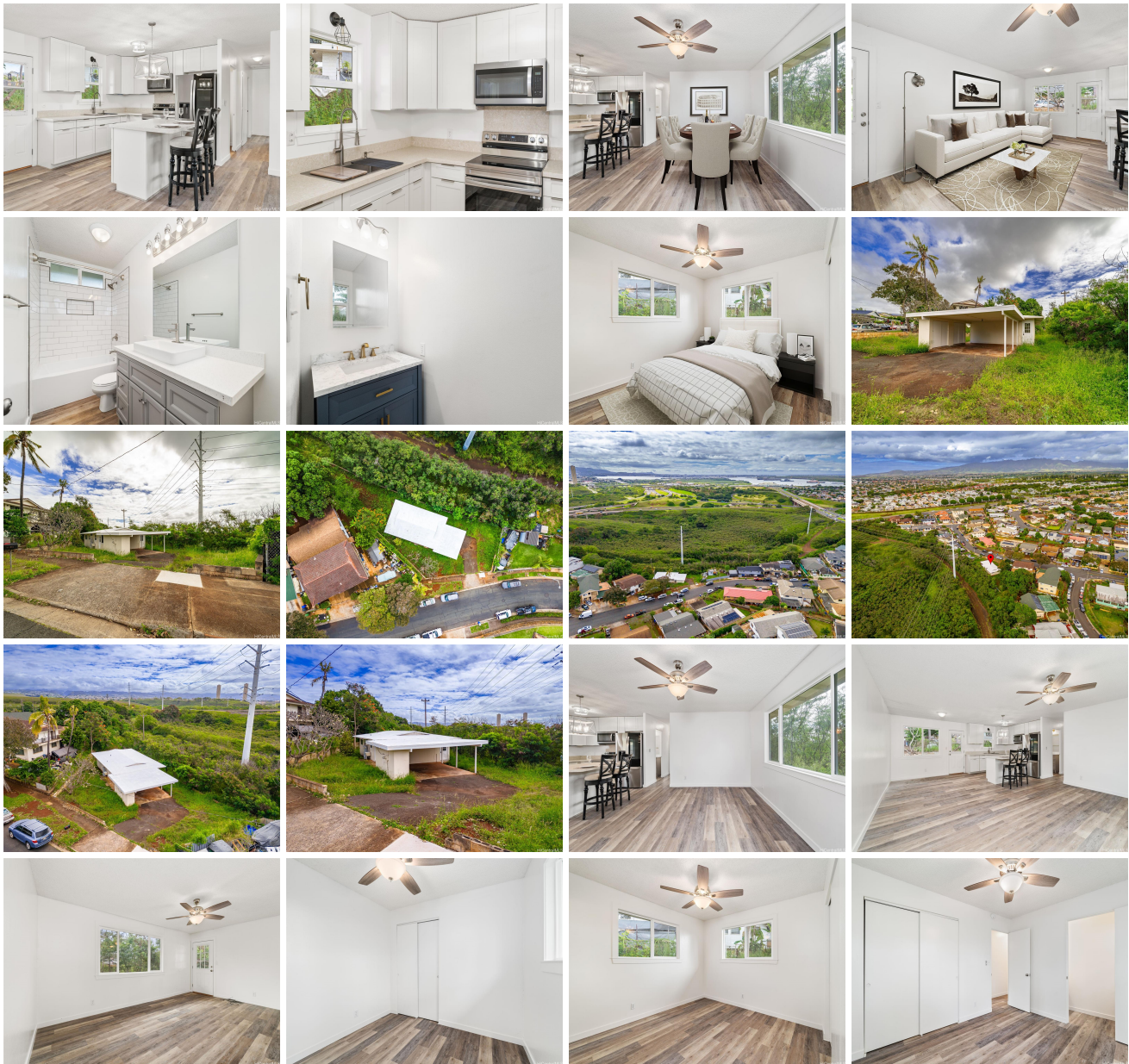


**94-1051 Lumikula Street, Waipahu 96797 \* \$939,000**

Beds: <b>3</b>	MLS#: <b>202406652, FS</b>	Year Built: <b>1977</b>
Bath: <b>1/1</b>	Status: <b>Active Under Contract</b>	Remodeled: <b>2023</b>
Living Sq. Ft.: <b>1,008</b>	List Date & DOM: <b>03-24-2024 &amp; 9</b>	Total Parking: <b>6</b>
Land Sq. Ft.: <b>8,099</b>	Condition: <b>Excellent</b>	<a href="#">Assessed Value</a>
Lanai Sq. Ft.: <b>0</b>	Frontage: <b>Conservation, Other</b>	Building: <b>\$169,500</b>
Sq. Ft. Other: <b>0</b>	Tax/Year: <b>\$276/2023</b>	Land: <b>\$778,100</b>
Total Sq. Ft. <b>1,008</b>	Neighborhood: <b>Seaview</b>	Total: <b>\$947,600</b>
Maint./Assoc. <b>\$0 / \$0</b>	<a href="#">Flood Zone</a> : <b>Zone X - Tool</b>	Stories / CPR: <b>One / No</b>
Parking: <b>2 Car, Carport, Driveway, Street</b>	Frontage: <b>Conservation, Other</b>	
<a href="#">Zoning</a> : <b>05 - R-5 Residential District</b>	View: <b>None, Other</b>	

**Public Remarks:** Beautiful remodeled home with new modern appliances. 1 story open floor plan with cool grey tones. All new windows and ceiling fans in each room. Located on a large level lot in backing open space with plenty of potential and possibilities for expansion. Roof newly sealed. This is a rare find in the Seaview neighborhood centrally located just a few minutes to Waikale Golf Course, Waikale Outlets, Safeway, Lowes, Costco, restaurants and H1. **Sale Conditions:** None  
**Schools:** [Waikale](#), [Waipahu](#), [Waipahu](#) \* [Request Showing](#), [Photos](#), [History](#), [Maps](#), [Deed](#), [Watch List](#), [Tax Info](#)





Address	Price	Bd & Bth	Living / Avg.	Land   Avg.	DOM
<a href="#">94-1051 Lumikula Street</a>	<a href="#">\$939,000</a>	3 & 1/1	1,008   \$932	8,099   \$116	9

Address	Tax   Maint.   Ass.	Assessed Land	Assessed Building	Assessed Total	Ratio	Year & Remodeled
<a href="#">94-1051 Lumikula Street</a>	\$276   \$0   \$0	\$778,100	\$169,500	\$947,600	99%	1977 & 2023

[94-1051 Lumikula Street](#) - MLS#: [202406652](#) - Beautiful remodeled home with new modern appliances. 1 story open floor plan with cool grey tones. All new windows and ceiling fans in each room. Located on a large level lot in backing open space with plenty of potential and possibilities for expansion. Roof newly sealed. This is a rare find in the Seaview neighborhood centrally located just a few minutes to Waialeale Golf Course, Waialeale Outlets, Safeway, Lowes, Costco, restaurants and H1. **Region:** Waipahu **Neighborhood:** Seaview **Condition:** Excellent **Parking:** 2 Car, Carport, Driveway, Street **Total Parking:** 6 **View:** None, Other **Frontage:** Conservation, Other **Pool:** None **Zoning:** 05 - R-5 Residential District **Sale Conditions:** None **Schools:** [Waialeale](#), [Waipahu](#), [Waipahu](#) \* [Request Showing](#), [Photos](#), [History](#), [Maps](#), [Deed](#), [Watch List](#), [Tax Info](#)

DOM = Days on Market