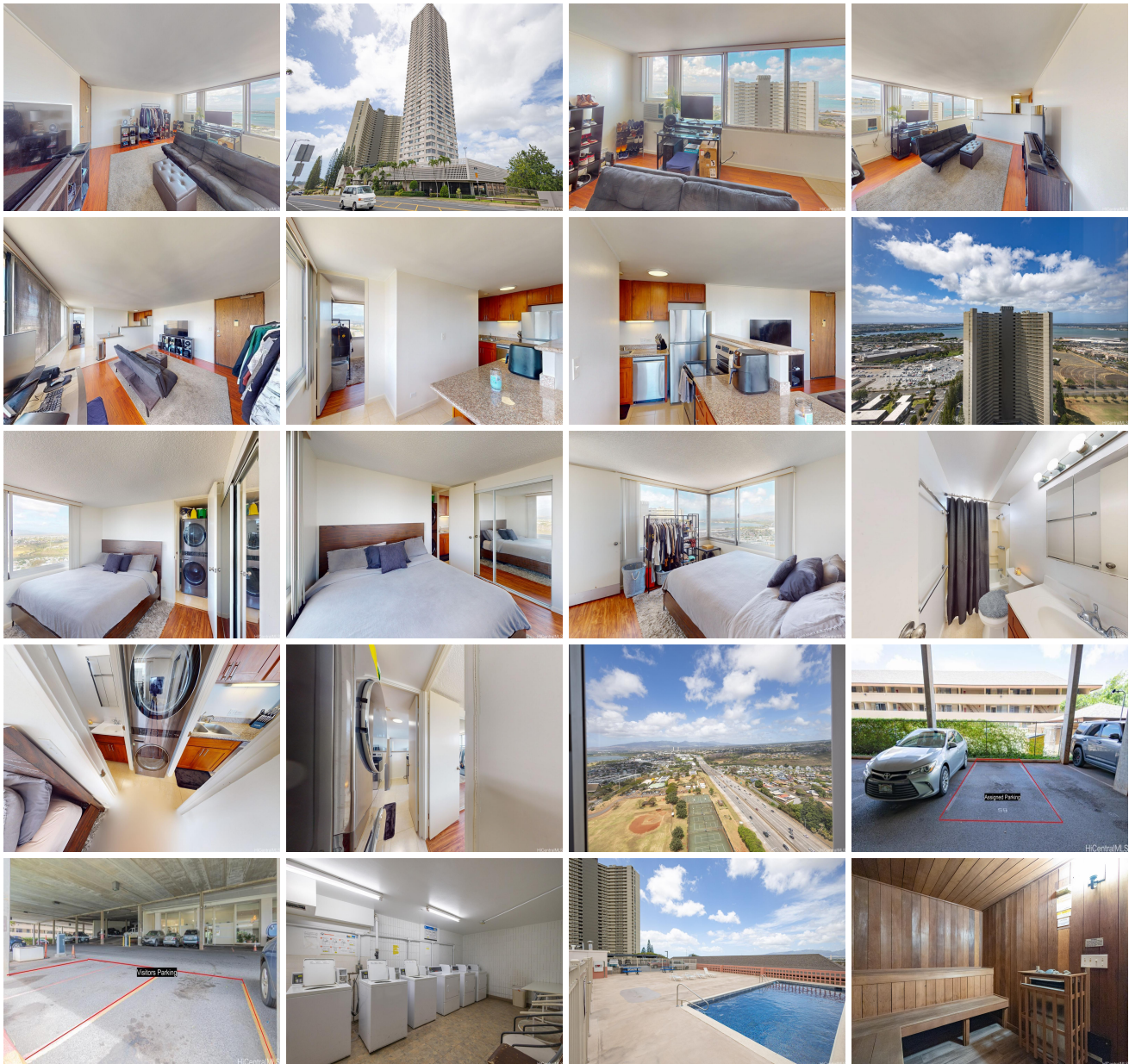


Pearlridge Square 98-288 Kaonohi Street Unit 3102, Aiea 96701 * \$415,000

Beds: 1	MLS#: 202406773, FS	Year Built: 1980
Bath: 1/0	Status: Active	Remodeled:
Living Sq. Ft.: 515	List Date & DOM: 04-10-2024 & 38	Total Parking: 1
Land Sq. Ft.: 50,007	Condition: Above Average	Assessed Value
Lanai Sq. Ft.: 0	Frontage:	Building: \$319,000
Sq. Ft. Other: 0	Tax/Year: \$101/2023	Land: \$26,200
Total Sq. Ft. 515	Neighborhood: Pearlridge	Total: \$345,200
Maint./Assoc. \$504 / \$0	Flood Zone : Zone X - Tool	Stories / CPR: 8-14 / No
Parking: Assigned, Covered - 1	Frontage:	
Zoning : 12 - A-2 Medium Density Apartme	View: City, Ocean	

Public Remarks: Experience convenient island living in this charming 1-bedroom, 1-bathroom condo nestled in the heart of Aiea. This cozy residence offers a comfortable living space with ocean views. The open floor plan maximizes space and natural light, creating a welcoming atmosphere throughout. Enjoy preparing meals in the comfort of your home, then relax by soaking in the views. The bedroom provides a peaceful retreat, while the bathroom offers both style and convenience. With its convenient location near shopping, dining, and transportation options, this condo is the perfect opportunity to embrace the relaxed lifestyle of Aiea. Don't miss out - schedule a showing today and make this your island oasis! **Sale Conditions:** None

Schools: , , * [Request Showing](#), [Photos](#), [History](#), [Maps](#), [Deed](#), [Watch List](#), [Tax Info](#)





Address	Price	Bd & Bth	Living / Avg.	Land Avg.	DOM
98-288 Kaonohi Street 3102	\$415,000	1 & 1/0	515 \$806	50,007 \$8	38

Address	Tax Maint. Ass.	Assessed Land	Assessed Building	Assessed Total	Ratio	Year & Remodeled
98-288 Kaonohi Street 3102	\$101 \$504 \$0	\$26,200	\$319,000	\$345,200	120%	1980 & NA

[98-288 Kaonohi Street 3102](#) - MLS#: [202406773](#) - Experience convenient island living in this charming 1-bedroom, 1-bathroom condo nestled in the heart of Aiea. This cozy residence offers a comfortable living space with ocean views. The open floor plan maximizes space and natural light, creating a welcoming atmosphere throughout. Enjoy preparing meals in the comfort of your home, then relax by soaking in the views. The bedroom provides a peaceful retreat, while the bathroom offers both style and convenience. With its convenient location near shopping, dining, and transportation options, this condo is the perfect opportunity to embrace the relaxed lifestyle of Aiea. Don't miss out - schedule a showing today and make this your island oasis! **Region:** Pearl City **Neighborhood:** Pearlridge **Condition:** Above Average **Parking:** Assigned, Covered - 1 **Total Parking:** 1 **View:** City, Ocean **Frontage:** **Pool:** **Zoning:** 12 - A-2 Medium Density Apartme **Sale Conditions:** None **Schools:** , , * [Request Showing](#), [Photos](#), [History](#), [Maps](#), [Deed](#), [Watch List](#), [Tax Info](#)

DOM = Days on Market