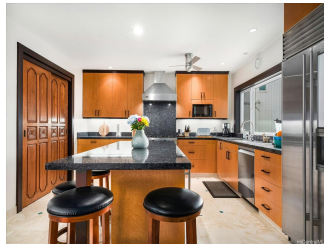


59-021 Holawa Street, Haleiwa 96712 * \$6,390,000

Beds: 3	MLS#: <u>202407034</u>, FS	Year Built: 2003
Bath: 3/0	Status: Active	Remodeled:
Living Sq. Ft.: 2,869	List Date & DOM: 03-25-2024 & 48	Total Parking: 4
Land Sq. Ft.: 10,378	Condition: Above Average	Assessed Value
Lanai Sq. Ft.: 1,187	Frontage: Ocean, Sandy Beach	Building: \$1,603,000
Sq. Ft. Other: 0	Tax/Year: \$3,788/2023	Land: \$3,033,700
Total Sq. Ft. 4,056	Neighborhood: Sunset Area	Total: \$4,636,700
Maint./Assoc. \$0 / \$0	Flood Zone : Zone VE - Tool	Stories / CPR: Two / No
Parking: 3 Car+, Driveway, Garage	Frontage: Ocean, Sandy Beach	View: Coastline, Mountain, Ocean, Sunrise, Sunset
Zoning : 05 - R-5 Residential District		

Public Remarks: This custom-built beachfront home at Sunset Beach offers the perfect blend of privacy and convenience. Located three blocks from Kam Highway, residents enjoy easy access to Sunset Beach Elementary School, Pipeline Beach, and the nearby Foodland Supermarket. Boasting 3 bedrooms, 3 baths, and a unique Balinese-inspired design. Meticulously crafted and designed to maximize its stunning oceanfront location and the cooling trade wind breeze. Situated on a generous 10,372 sq ft lot, the property faces west, providing breathtaking views of the vast Pacific Ocean. The interior spans 2,869 sq ft, complemented by an additional 1,1715 sq ft of garage and deck space for indoor/outdoor living. There's a custom-built Balinese pergola with retractable chaise lounge backrests to relax on and soak in the spectacular views. Balinese stone carvings and architectural details further enhance the tropical ambiance. The lush garden showcases vibrant flowers. Enjoy the sweet low-growing coconuts, papayas, figs and herbs. Swim, snorkel, fish & surf right in front of your home. Immerse yourself in awe-inspiring sunsets and glowing rainbows of this spectacular beachfront paradise. **Sale Conditions:** None
Schools: [Sunset Beach](#), [Kahuku](#), [Kahuku](#) * [Request Showing](#), [Photos](#), [History](#), [Maps](#), [Deed](#), [Watch List](#), [Tax Info](#)





Address	Price	Bd & Bth	Living / Avg.	Land Avg.	DOM
59-021 Holawa Street	\$6,390,000	3 & 3/0	2,869 \$2,227	10,378 \$616	48

Address	Tax Maint. Ass.	Assessed Land	Assessed Building	Assessed Total	Ratio	Year & Remodeled
59-021 Holawa Street	\$3,788 \$0 \$0	\$3,033,700	\$1,603,000	\$4,636,700	138%	2003 & NA

[59-021 Holawa Street](#) - MLS#: [202407034](#) - This custom-built beachfront home at Sunset Beach offers the perfect blend of privacy and convenience. Located three blocks from Kam Highway, residents enjoy easy access to Sunset Beach Elementary School, Pipeline Beach, and the nearby Foodland Supermarket. Boasting 3 bedrooms, 3 baths, and a unique Balinese-inspired design. Meticulously crafted and designed to maximize its stunning oceanfront location and the cooling trade wind breeze. Situated on a generous 10,372 sq ft lot, the property faces west, providing breathtaking views of the vast Pacific Ocean. The interior spans 2,869 sq ft, complemented by an additional 1,1715 sq ft of garage and deck space for indoor/outdoor living. There's a custom-built Balinese pergola with retractable chaise lounge backrests to relax on and soak in the spectacular views. Balinese stone carvings and architectural details further enhance the tropical ambiance. The lush garden showcases vibrant flowers. Enjoy the sweet low-growing coconuts, papayas, figs and herbs. Swim, snorkel, fish & surf right in front of your home. Immerse yourself in awe-inspiring sunsets and glowing rainbows of this spectacular beachfront paradise.

Region: North Shore **Neighborhood:** Sunset Area **Condition:** Above Average **Parking:** 3 Car+, Driveway, Garage **Total Parking:** 4 **View:** Coastline, Mountain, Ocean, Sunrise, Sunset **Frontage:** Ocean, Sandy Beach **Pool:** None **Zoning:** 05 - R-5 Residential District **Sale Conditions:** None **Schools:** [Sunset Beach](#), [Kahuku](#), [Kahuku](#) * [Request Showing](#), [Photos](#), [History](#), [Maps](#), [Deed](#), [Watch List](#), [Tax Info](#)

DOM = Days on Market