

Diamond Head Alii 3027 Pualei Circle Unit 102, Honolulu 96815 * \$535,000 * Originally

\$555,000

Beds: **1**
Bath: **1/0**
Living Sq. Ft.: **661**
Land Sq. Ft.: **31,886**
Lanai Sq. Ft.: **0**
Sq. Ft. Other: **0**
Total Sq. Ft. **661**
Maint./Assoc. **\$631 / \$0**

MLS#: **202407065, FS**
Status: **Active**
List Date & DOM: **04-16-2024 & 34**
Condition: **Average**
Frontage:
Tax/Year: **\$171/2023**
Neighborhood: **Diamond Head**
[Flood Zone](#): **Zone X - Tool**

Year Built: **1961**
Remodeled:
Total Parking: **1**
[Assessed Value](#)
Building: **\$434,800**
Land: **\$151,000**
Total: **\$585,800**
Stories / CPR: **Three / No**

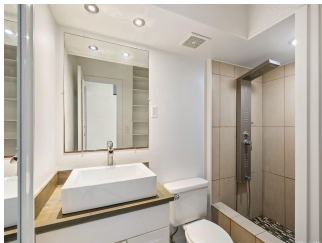
Parking: **Assigned, Open - 1**

[Zoning](#): **12 - A-2 Medium Density Apartme**

Frontage:

View: **Garden, Other**

Public Remarks: Nestled near the skirts of Leahi, you'll find the iconic neighborhood known as Pualei Circle. This charming one bedroom, one bath condo at Diamond Head Ali'i, offers deeded parking, and is a pet friendly complex! Situated near the Gold Coast, Outrigger Canoe Club and the Elks Lodge, it's just minutes from both Kapiolani Park and Kaimana Beach! So easy to get your daily dose of Hawaii living. Our ground floor unit is also just a stone's throw from frolicking at the infamous Waikiki Beach or finding a cool eatery in the Kapahulu area, where the restaurants and shopping are endless. Apartment's bathroom has been updated, and its entire interior has been freshly painted, and meticulously cleaned. Reasonably priced, yet ready for your personal touch. Call or text your fave realtor, and let's get started! **Sale Conditions:** None **Schools:** [Waikiki](#), [Kaimuki](#), [Kalani](#) * [Request Showing](#), [Photos](#), [History](#), [Maps](#), [Deed](#), [Watch List](#), [Tax Info](#)





Address	Price	Bd & Bth	Living / Avg.	Land Avg.	DOM
3027 Pualei Circle 102	\$535,000	1 & 1/0	661 \$809	31,886 \$17	34

Address	Tax Maint. Ass.	Assessed Land	Assessed Building	Assessed Total	Ratio	Year & Remodeled
3027 Pualei Circle 102	\$171 \$631 \$0	\$151,000	\$434,800	\$585,800	91%	1961 & NA

[3027 Pualei Circle 102](#) - MLS#: [202407065](#) - Original price was \$555,000 - Nestled near the skirts of Leahi, you'll find the iconic neighborhood known as Pualei Circle. This charming one bedroom, one bath condo at Diamond Head Ali'i, offers deeded parking, and is a pet friendly complex! Situated near the Gold Coast, Outrigger Canoe Club and the Elks Lodge, it's just minutes from both Kapiolani Park and Kaimana Beach! So easy to get your daily dose of Hawaii living. Our ground floor unit is also just a stone's throw from frolicking at the infamous Waikiki Beach or finding a cool eatery in the Kapahulu area, where the restaurants and shopping are endless. Apartment's bathroom has been updated, and its entire interior has been freshly painted, and meticulously cleaned. Reasonably priced, yet ready for your personal touch. Call or text your fave realtor, and let's get started! **Region:** Diamond Head **Neighborhood:** Diamond Head **Condition:** Average **Parking:** Assigned, Open - 1 **Total Parking:** 1 **View:** Garden, Other **Frontage:** Pool: **Zoning:** 12 - A-2 Medium Density Apartme **Sale Conditions:** None **Schools:** [Waikiki](#), [Kaimuki](#), [Kalani](#) * [Request Showing](#), [Photos](#), [History](#), [Maps](#), [Deed](#), [Watch List](#), [Tax Info](#)

DOM = Days on Market