

Puu Alii 2-2 46-058 Aliikane Place Unit 2125, Kaneohe 96744 * \$735,000

Beds: **2**

MLS#: **202407164, FS**

Year Built: **1981**

Bath: **2/0**

Status: **Active Under Contract**

Remodeled:

Living Sq. Ft.: **1,132**

List Date & DOM: **04-01-2024 & 10**

Total Parking: **2**

Land Sq. Ft.: **172,628**

Condition: **Above Average**

[Assessed Value](#)

Lanai Sq. Ft.: **128**

Frontage:

Building: **\$678,700**

Sq. Ft. Other: **0**

Tax/Year: **\$257/2023**

Land: **\$203,100**

Total Sq. Ft. **1,260**

Neighborhood: **Puualii**

Total: **\$881,800**

Maint./Assoc. **\$478 / \$571**

[Flood Zone](#): **Zone X - Tool**

Stories / CPR: **Two / No**

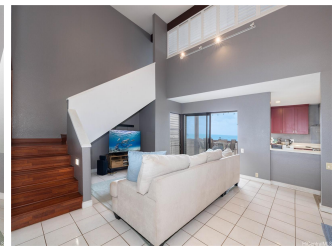
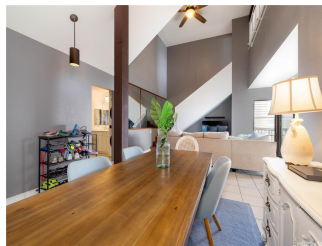
Parking: **Assigned, Covered - 1, Guest, Open - 1, Street**

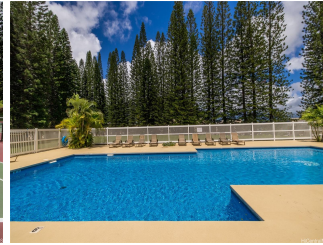
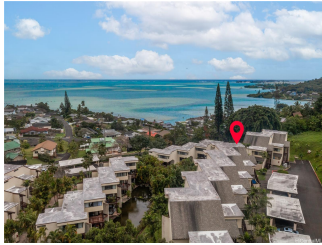
Frontage:

[Zoning](#): **12 - A-2 Medium Density Apartme**

View: **Mountain, Ocean**

Public Remarks: Welcome to your dream home in Puu Alii, where stunning ocean and mountain views await you every morning! This rarely available 2 bedroom, 2 bath corner unit condo offers the perfect blend of luxury, comfort, and convenience. As you step into this immaculate home, you'll be greeted by an upgraded kitchen featuring sleek stainless steel appliances, perfect for preparing delicious meals while enjoying the panoramic vistas. The vaulted ceilings create an airy and spacious atmosphere, complemented by elegant plantation shutters that enhance privacy and style. Whether you're unwinding on your private lanai overlooking the sparkling ocean or taking in the majestic beauty of the Koolau Mountains, every moment spent here is pure bliss. Beyond the confines of your condo, indulge in resort-like amenities including a rejuvenating sauna, soothing hot tub, inviting pool, tranquil koi pond, and scenic jogging trails. Whether you prefer relaxation or recreation, there's something for everyone to enjoy in this community. Don't miss out on the opportunity to make this breathtaking corner unit condo your own slice of paradise. **Sale Conditions:** None **Schools:** [Parker](#), [King](#), [Castle](#) * [Request Showing](#), [Photos](#), [History](#), [Maps](#), [Deed](#), [Watch List](#), [Tax Info](#)





Address	Price	Bd & Bth	Living / Avg.	Land Avg.	DOM
46-058 Aliikane Place 2125	\$735,000	2 & 2/0	1,132 \$649	172,628 \$4	10

Address	Tax Maint. Ass.	Assessed Land	Assessed Building	Assessed Total	Ratio	Year & Remodeled
46-058 Aliikane Place 2125	\$257 \$478 \$571	\$203,100	\$678,700	\$881,800	83%	1981 & NA

[46-058 Aliikane Place 2125](#) - MLS#: [202407164](#) - Welcome to your dream home in Puu Alii, where stunning ocean and mountain views await you every morning! This rarely available 2 bedroom, 2 bath corner unit condo offers the perfect blend of luxury, comfort, and convenience. As you step into this immaculate home, you'll be greeted by an upgraded kitchen featuring sleek stainless steel appliances, perfect for preparing delicious meals while enjoying the panoramic vistas. The vaulted ceilings create an airy and spacious atmosphere, complemented by elegant plantation shutters that enhance privacy and style. Whether you're unwinding on your private lanai overlooking the sparkling ocean or taking in the majestic beauty of the Koolau Mountains, every moment spent here is pure bliss. Beyond the confines of your condo, indulge in resort-like amenities including a rejuvenating sauna, soothing hot tub, inviting pool, tranquil koi pond, and scenic jogging trails. Whether you prefer relaxation or recreation, there's something for everyone to enjoy in this community. Don't miss out on the opportunity to make this breathtaking corner unit condo your own slice of paradise. **Region:** Kaneohe **Neighborhood:** Puualii **Condition:** Above Average **Parking:** Assigned, Covered - 1, Guest, Open - 1, Street **Total Parking:** 2 **View:** Mountain, Ocean **Frontage:** **Pool:** **Zoning:** 12 - A-2 Medium Density Apartme **Sale Conditions:** None **Schools:** [Parker, King, Castle](#) * [Request Showing](#), [Photos](#), [History](#), [Maps](#), [Deed](#), [Watch List](#), [Tax Info](#)

DOM = Days on Market