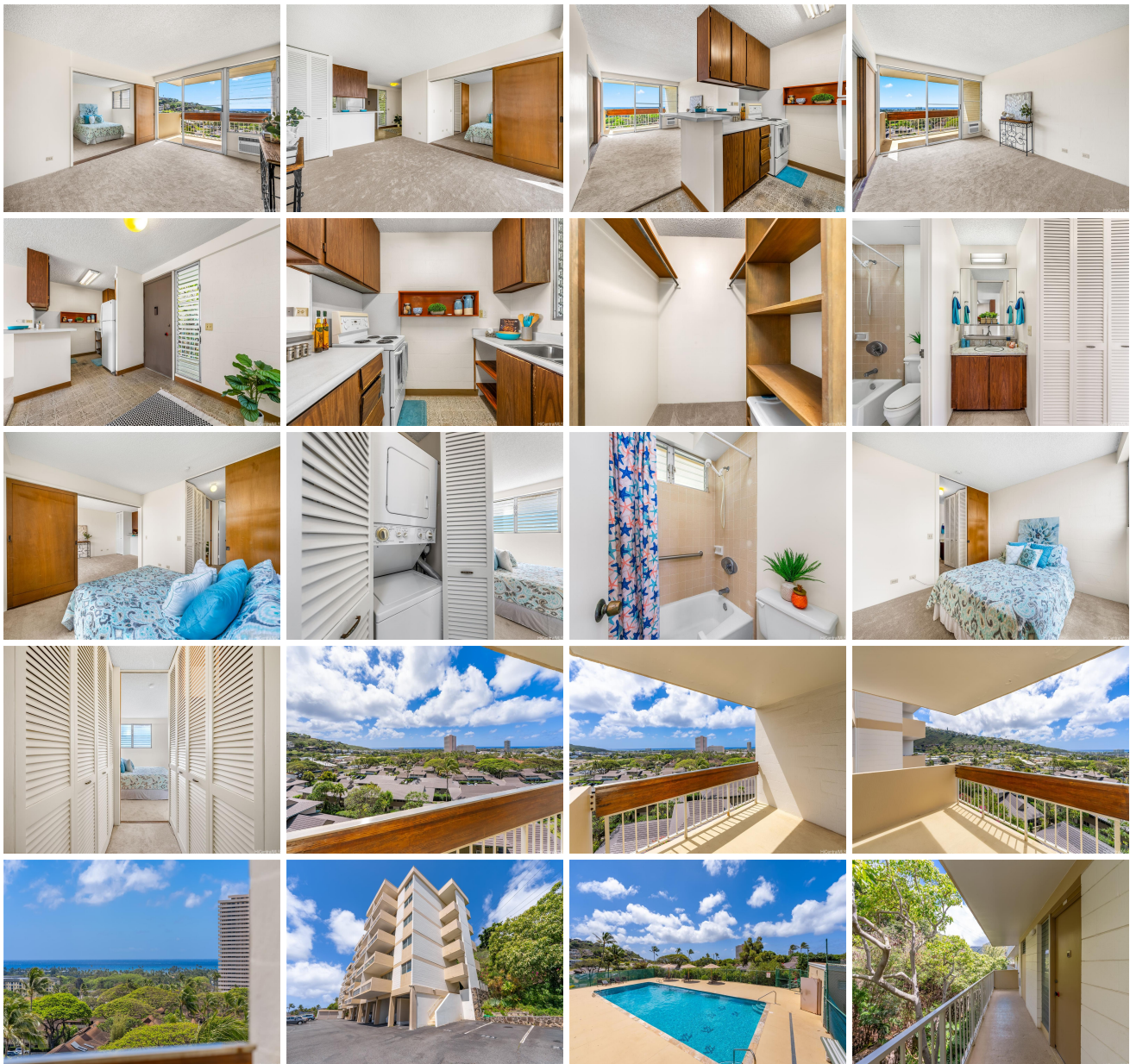


**Waialae Gardens 4970 Kilauea Avenue Unit 507, Honolulu 96816 \* \$525,000**

Beds: <b>1</b>	MLS#: <b>202407303, FS</b>	Year Built: <b>1972</b>
Bath: <b>1/0</b>	Status: <b>Active</b>	Remodeled:
Living Sq. Ft.: <b>624</b>	List Date & DOM: <b>04-26-2024 &amp; 23</b>	Total Parking: <b>1</b>
Land Sq. Ft.: <b>0</b>	Condition: <b>Average</b>	<a href="#">Assessed Value</a>
Lanai Sq. Ft.: <b>88</b>	Frontage:	Building: <b>\$64,000</b>
Sq. Ft. Other: <b>0</b>	Tax/Year: <b>\$113/2024</b>	Land: <b>\$461,200</b>
Total Sq. Ft. <b>712</b>	Neighborhood: <b>Waialae Nui Vly</b>	Total: <b>\$525,200</b>
Maint./Assoc. <b>\$775 / \$0</b>	<a href="#">Flood Zone</a> : <b>Zone X - Tool</b>	Stories / CPR: <b>4-7 / No</b>
Parking: <b>Assigned, Open - 1</b>	Frontage:	
<a href="#">Zoning</a> : <b>11 - A-1 Low Density Apartment</b>	View: <b>Mountain, Ocean</b>	

**Public Remarks:** NEW LISTING in peaceful Waialae Nui Valley! This 1 bed/1 bath/1 parking condo is located in the low rise building in Waialae Gardens, perched atop the hillside with BREATHTAKING OCEAN VIEWS! Features include new carpet, fresh paint, cool trade wind breezes & a spacious covered lanai to enjoy those views. PRIME LOCATION close to Kahala Mall, Whole Foods, Foodland, freeway access, restaurants, beaches, parks and schools. Hurry and see this AMAZING OPPORTUNITY to get your very own piece of paradise! **Sale Conditions:** None **Schools:** , , \* [Request Showing](#), [Photos](#), [History](#), [Maps](#), [Deed](#), [Watch List](#), [Tax Info](#)





Address	Price	Bd & Bth	Living / Avg.	Land   Avg.	DOM
<a href="#">4970 Kilauea Avenue 507</a>	<a href="#">\$525,000</a>	1 & 1/0	624   \$841	0   \$inf	23

Address	Tax   Maint.   Ass.	Assessed Land	Assessed Building	Assessed Total	Ratio	Year & Remodeled
<a href="#">4970 Kilauea Avenue 507</a>	\$113   \$775   \$0	\$461,200	\$64,000	\$525,200	100%	1972 & NA

[4970 Kilauea Avenue 507](#) - MLS#: [202407303](#) - NEW LISTING in peaceful Waialae Nui Valley! This 1 bed/1 bath/1 parking condo is located in the low rise building in Waialae Gardens, perched atop the hillside with BREATHE-TAKING OCEAN VIEWS! Features include new carpet, fresh paint, cool trade wind breezes & a spacious covered lanai to enjoy those views. PRIME LOCATION close to Kahala Mall, Whole Foods, Foodland, freeway access, restaurants, beaches, parks and schools. Hurry and see this AMAZING OPPORTUNITY to get your very own piece of paradise! **Region:** Diamond Head **Neighborhood:** Waialae Nui Vly **Condition:** Average **Parking:** Assigned, Open - 1 **Total Parking:** 1 **View:** Mountain, Ocean **Frontage:** Pool: **Zoning:** 11 - A-1 Low Density Apartment **Sale Conditions:** None **Schools:** , , \* [Request Showing](#), [Photos](#), [History](#), [Maps](#), [Deed](#), [Watch List](#), [Tax Info](#)

DOM = Days on Market