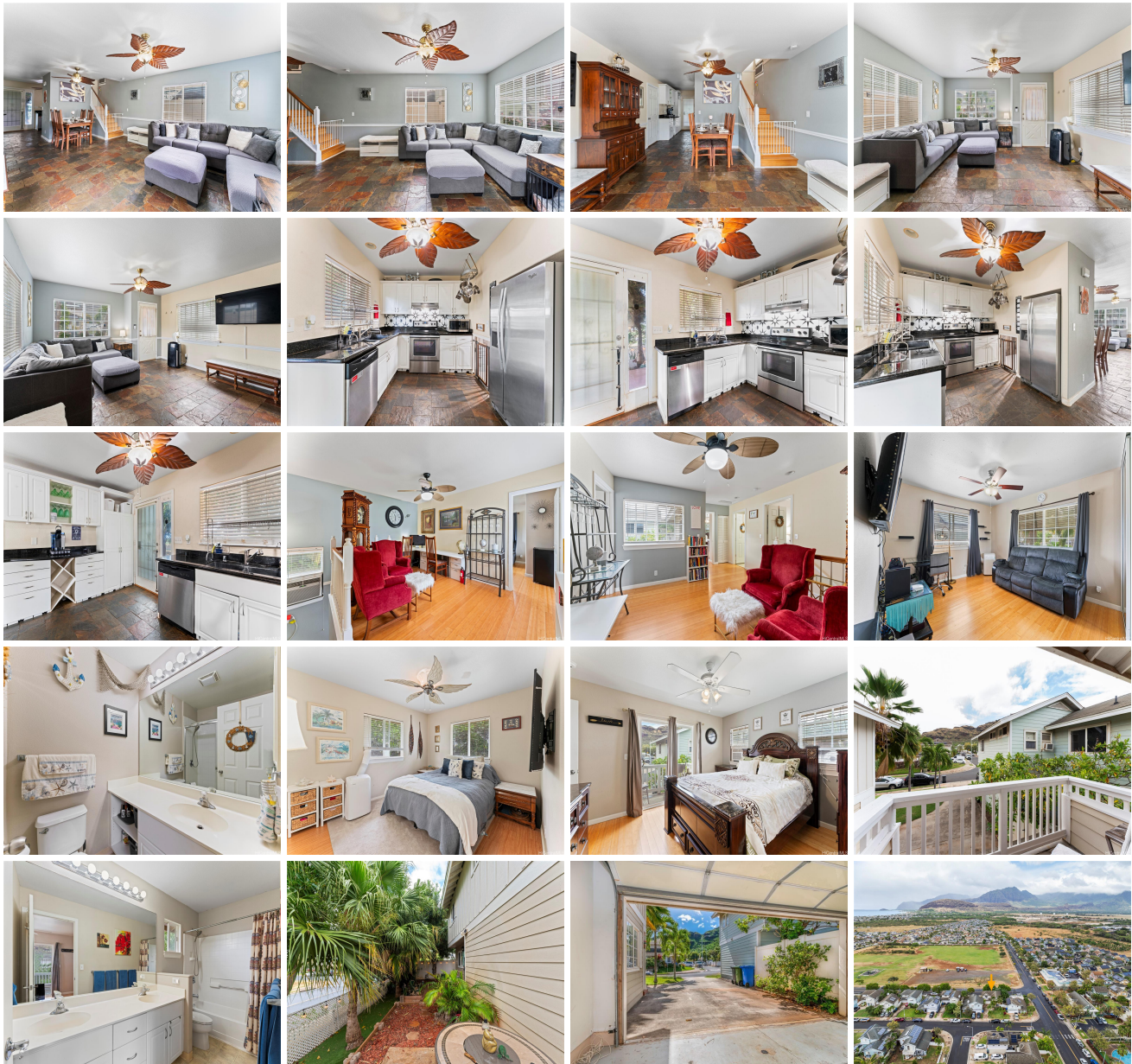


**87-1084 Huamoa Street, Waianae 96792 \* \$715,000 \* Originally \$725,000**

Beds: <b>3</b>	MLS#: <b><u>202407876</u>, FS</b>	Year Built: <b>2003</b>
Bath: <b>2/0</b>	Status: <b>Active</b>	Remodeled:
Living Sq. Ft.: <b>1,363</b>	List Date & DOM: <b>04-09-2024 &amp; 36</b>	Total Parking: <b>4</b>
Land Sq. Ft.: <b>3,900</b>	Condition: <b>Excellent, Above Average</b>	<a href="#">Assessed Value</a>
Lanai Sq. Ft.: <b>0</b>	Frontage:	Building: <b>\$201,100</b>
Sq. Ft. Other: <b>0</b>	Tax/Year: <b>\$130/2023</b>	Land: <b>\$444,200</b>
Total Sq. Ft. <b>1,363</b>	Neighborhood: <b>Maili Sea-palekai</b>	Total: <b>\$645,300</b>
Maint./Assoc. <b>\$0 / \$70</b>	<a href="#">Flood Zone</a> : <b>Zone D - Tool</b>	Stories / CPR: <b>Two / No</b>
Parking: <b>3 Car+, Driveway, Garage, Street</b>	Frontage:	
<a href="#">Zoning</a> : <b>05 - R-5 Residential District</b>	View: <b>Coastline, Mountain, Ocean, Sunset</b>	

**Public Remarks:** Located near the stunning coastline of Waianae in the Sea Country community, this beautiful 3-bedroom, 2-bathroom home with a 2-car enclosed garage blends island style with practicality. As you step inside, you'll be greeted by stylish slate floors downstairs and bamboo flooring upstairs. The kitchen serves as the centerpiece, boasting recessed lighting, a recessed refrigerator, granite countertops, ample storage, modern appliances, and a view of the park. The living areas are spacious and ideal for entertaining guests. Outside, the yard is shaded by palm trees, creating a tranquil setting for relaxation and outdoor gatherings. Nearby amenities include a community pool, general store, and public park, ensuring convenience. Ample parking is available, and you can easily access the house through the garage. A notable feature is the built-in room under the stairs, perfect for pets or extra storage. This home provides the comfort of single-family living in a convenient location. Additionally, portable AC units in the rooms will be included with the home for added comfort. VA assumable loan. **Sale Conditions:** None **Schools:** [Maili](#), [Waianae](#), [Waianae](#) \* [Request Showing](#), [Photos](#), [History](#), [Maps](#), [Deed](#), [Watch List](#), [Tax Info](#)





Address	Price	Bd & Bth	Living / Avg.	Land   Avg.	DOM
<a href="#">87-1084 Huamoa Street</a>	<b>\$715,000</b>	3 & 2/0	1,363   \$525	3,900   \$183	36

Address	Tax   Maint.   Ass.	Assessed Land	Assessed Building	Assessed Total	Ratio	Year & Remodeled
<a href="#">87-1084 Huamoa Street</a>	\$130   \$0   \$70	\$444,200	\$201,100	\$645,300	111%	2003 & NA

[87-1084 Huamoa Street](#) - MLS#: [202407876](#) - Original price was \$725,000 - Located near the stunning coastline of Waianae in the Sea Country community, this beautiful 3-bedroom, 2-bathroom home with a 2-car enclosed garage blends island style with practicality. As you step inside, you'll be greeted by stylish slate floors downstairs and bamboo flooring upstairs. The kitchen serves as the centerpiece, boasting recessed lighting, a recessed refrigerator, granite countertops, ample storage, modern appliances, and a view of the park. The living areas are spacious and ideal for entertaining guests. Outside, the yard is shaded by palm trees, creating a tranquil setting for relaxation and outdoor gatherings. Nearby amenities include a community pool, general store, and public park, ensuring convenience. Ample parking is available, and you can easily access the house through the garage. A notable feature is the built-in room under the stairs, perfect for pets or extra storage. This home provides the comfort of single-family living in a convenient location. Additionally, portable AC units in the rooms will be included with the home for added comfort. VA assumable loan. **Region:** Leeward **Neighborhood:** Maili Sea-palekai **Condition:** Excellent, Above Average **Parking:** 3 Car+, Driveway, Garage, Street **Total Parking:** 4 **View:** Coastline, Mountain, Ocean, Sunset **Frontage:** **Pool:** Community Association Pool **Zoning:** 05 - R-5 Residential District **Sale Conditions:** None **Schools:** [Maili](#), [Waianae](#), [Waianae](#) \* [Request Showing](#), [Photos](#), [History](#), [Maps](#), [Deed](#), [Watch List](#), [Tax Info](#)

DOM = Days on Market