

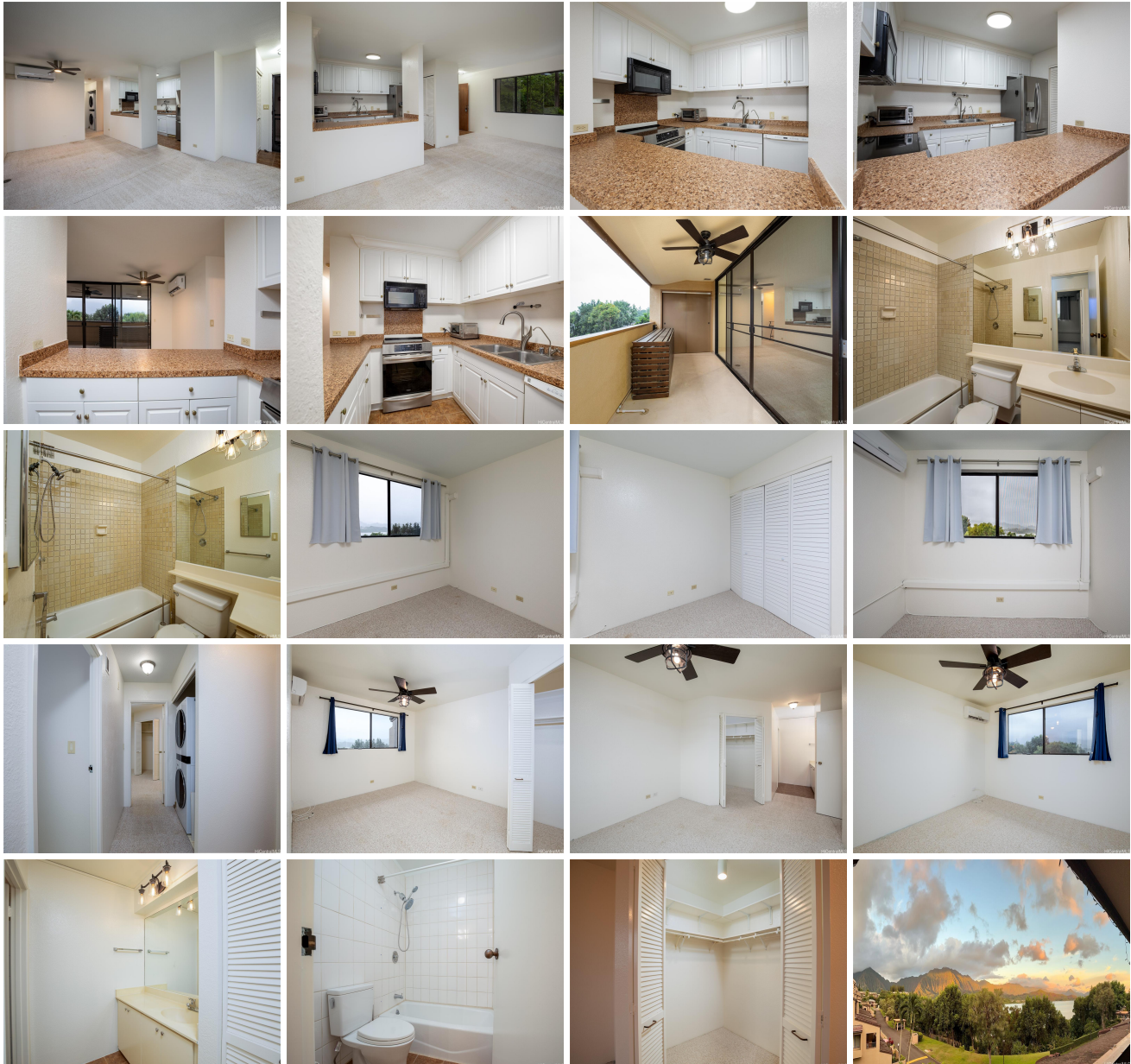
Poha Kea Point 4-3 46-050 Konane Place Unit 3722, Kaneohe 96744 * \$799,000

Beds: 2	MLS#: <u>202408031</u>, FS	Year Built: 1990
Bath: 2/0	Status: Active	Remodeled:
Living Sq. Ft.: 883	List Date & DOM: 04-14-2024 & 31	Total Parking: 2
Land Sq. Ft.: 106,548	Condition: Above Average	Assessed Value
Lanai Sq. Ft.: 146	Frontage: Other	Building: \$544,900
Sq. Ft. Other: 0	Tax/Year: \$180/2024	Land: \$190,000
Total Sq. Ft. 1,029	Neighborhood: Lilipuna	Total: \$734,900
Maint./Assoc. \$384 / \$622	Flood Zone : Zone X - Tool	Stories / CPR: Three+ / No
Parking: Assigned, Covered - 1, Garage, Open - 1, Tandem	Frontage: Other	

[Zoning](#): **03 - R10 - Residential District**

View: **Coastline, Mountain, Ocean, Other, Sunrise, Sunset**

Public Remarks: Highly favored Poha Kea Point - this is a single level, corner end unit, w/2 bedrooms, 2 full bathrooms, gorgeous Ko'olau Mountain & Kaneohe Bay views from living room, kitchen and spacious lanai, recently painted walls/ceiling that comes with quality stainless kitchen appliances, side by side front loading washer/dryer in unit, 3 split AC units located in living rm & both bedrooms, has large primary bedroom walk in closet, 2 reserved parking spaces (one in garage), storage off lanai, & is conveniently located near Kamehameha/H-3/Likelike/Pali Hwy, MCBH, Windward Mall, schools, restaurants, & shopping markets. The Poha Kea community is pet-friendly (please verify specifics w/AOAO), is VA approved, comes with access to 3 swimming pools, hot tubs, community BBQ, clubhouse, tennis courts, tree lined jogging/walking/strolling path & 24 hr security. Unit is easy to see - Open House Sunday 05/05/2024 2-5pm. Mirror image floor plan in supplements. **Sale Conditions:** None **Schools:** [Heeia](#), [King](#), [Castle](#) * [Request Showing](#), [Photos](#), [History](#), [Maps](#), [Deed](#), [Watch List](#), [Tax Info](#)





Address	Price	Bd & Bth	Living / Avg.	Land Avg.	DOM
46-050 Konane Place 3722	\$799,000	2 & 2/0	883 \$905	106,548 \$7	31

Address	Tax Maint. Ass.	Assessed Land	Assessed Building	Assessed Total	Ratio	Year & Remodeled
46-050 Konane Place 3722	\$180 \$384 \$622	\$190,000	\$544,900	\$734,900	109%	1990 & NA

[46-050 Konane Place 3722](#) - MLS#: [202408031](#) - Highly favored Poha Kea Point - this is a single level, corner end unit, w/2 bedrooms, 2 full bathrooms, gorgeous Ko'olau Mountain & Kaneohe Bay views from living room, kitchen and spacious lanai, recently painted walls/ceiling that comes with quality stainless kitchen appliances, side by side front loading washer/dryer in unit, 3 split AC units located in living rm & both bedrooms, has large primary bedroom walk in closet, 2 reserved parking spaces (one in garage), storage off lanai, & is conveniently located near Kamehameha/H-3/Likelike/Pali Hwy, MCBH, Windward Mall, schools, restaurants, & shopping markets. The Poha Kea community is pet-friendly (please verify specifics w/AOAO), is VA approved, comes with access to 3 swimming pools, hot tubs, community BBQ, clubhouse, tennis courts, tree lined jogging/walking/strolling path & 24 hr security. Unit is easy to see - Open House Sunday 05/05/2024 2-5pm. Mirror image floor plan in supplements. **Region:** Kaneohe **Neighborhood:** Lilipuna **Condition:** Above Average **Parking:** Assigned, Covered - 1, Garage, Open - 1, Tandem **Total Parking:** 2 **View:** Coastline, Mountain, Ocean, Other, Sunrise, Sunset **Frontage:** Other **Pool:** **Zoning:** 03 - R10 - Residential District **Sale Conditions:** None **Schools:** [Heeia](#), [King](#), [Castle](#) *
[Request Showing](#), [Photos](#), [History](#), [Maps](#), [Deed](#), [Watch List](#), [Tax Info](#)

DOM = Days on Market