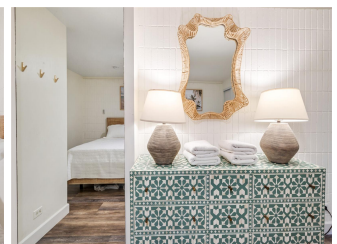
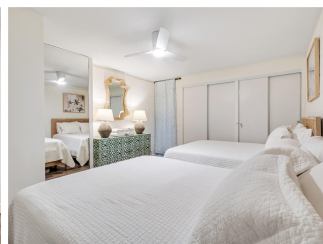
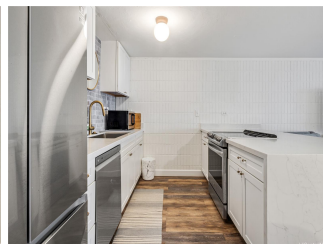
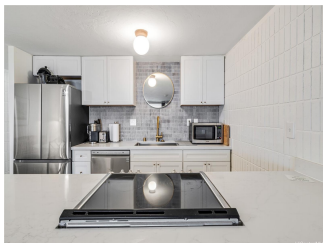


**Pats At Punaluu 53-567 Kamehameha Highway Unit 214, Hauula 96717 \* \$475,000 \***

**Originally \$525,000**

Beds: <b>1</b>	MLS#: <b><u>202408349</u>, FS</b>	Year Built: <b>1975</b>
Bath: <b>1/0</b>	Status: <b>Active</b>	Remodeled: <b>2023</b>
Living Sq. Ft.: <b>726</b>	List Date & DOM: <b>04-16-2024 &amp; 32</b>	Total Parking: <b>1</b>
Land Sq. Ft.: <b>126,672</b>	Condition: <b>Excellent</b>	<a href="#">Assessed Value</a>
Lanai Sq. Ft.: <b>128</b>	<b>Ocean, Sandy Beach, Waterfront</b>	Building: <b>\$357,700</b>
Sq. Ft. Other: <b>0</b>	Tax/Year: <b>\$123/2023</b>	Land: <b>\$62,400</b>
Total Sq. Ft. <b>854</b>	Neighborhood: <b>Punaluu</b>	Total: <b>\$420,100</b>
Maint./Assoc. <b>\$1,239 / \$0</b>	<a href="#">Flood Zone</a> : <b>Zone X - Tool</b>	Stories / CPR: <b>8-14 / No</b>
Parking: <b>Assigned, Open - 1</b>	Frontage: <b>Ocean, Sandy Beach, Waterfront</b>	
<a href="#">Zoning</a> : <b>12 - A-2 Medium Density Apartme</b>	View: <b>Coastline, Ocean</b>	

**Public Remarks:** Welcome to your slice of paradise in Punaluu! Embrace beachfront living at its finest in this meticulously remodeled second-floor unit, boasting unparalleled views and serene coastal ambiance. This unit has been upgraded and meticulously maintained to offer comfort and style. Relish in the convenience of modern amenities, including a fully-equipped gym, inviting BBQ area, and a refreshing pool, all nestled within the confines of this beautiful property. Parking is a breeze with your very own assigned stall, ensuring effortless access to your coastal retreat. Delight in the tranquil lifestyle of beachfront living, where every day feels like a vacation. Unwind and soak in the breathtaking surroundings from your private lanai, meticulously crafted for relaxation and enjoyment. Rest easy knowing that all necessary projects have been completed for this unit, with the monthly assessment taken care of to date. Don't miss out on the opportunity to experience the ultimate beachside lifestyle. Make this your year-round sanctuary and revel in the beauty of Punaluu. Schedule your viewing today and start living your dream coastal life! 30 day or more rentals only. **Sale Conditions:** None **Schools:** , , \* [Request Showing](#), [Photos](#), [History](#), [Maps](#), [Deed](#), [Watch List](#), [Tax Info](#)





Address	Price	Bd & Bth	Living / Avg.	Land   Avg.	DOM
<a href="#">53-567 Kamehameha Highway 214</a>	<b>\$475,000</b>	1 & 1/0	726   \$654	126,672   \$4	32

Address	Tax   Maint.   Ass.	Assessed Land	Assessed Building	Assessed Total	Ratio	Year & Remodeled
<a href="#">53-567 Kamehameha Highway 214</a>	\$123   \$1,239   \$0	\$62,400	\$357,700	\$420,100	113%	1975 & 2023

[53-567 Kamehameha Highway 214](#) - MLS#: [202408349](#) - Original price was \$525,000 - Welcome to your slice of paradise in Punaluu! Embrace beachfront living at its finest in this meticulously remodeled second-floor unit, boasting unparalleled views and serene coastal ambiance. This unit has been upgraded and meticulously maintained to offer comfort and style. Relish in the convenience of modern amenities, including a fully-equipped gym, inviting BBQ area, and a refreshing pool, all nestled within the confines of this beautiful property. Parking is a breeze with your very own assigned stall, ensuring effortless access to your coastal retreat. Delight in the tranquil lifestyle of beachfront living, where every day feels like a vacation. Unwind and soak in the breathtaking surroundings from your private lanai, meticulously crafted for relaxation and enjoyment. Rest easy knowing that all necessary projects have been completed for this unit, with the monthly assessment taken care of to date. Don't miss out on the opportunity to experience the ultimate beachside lifestyle. Make this your year-round sanctuary and revel in the beauty of Punaluu. Schedule your viewing today and start living your dream coastal life! 30 day or more rentals only. **Region:** Kaneohe **Neighborhood:** Punaluu **Condition:** Excellent **Parking:** Assigned, Open - 1 **Total Parking:** 1 **View:** Coastline, Ocean **Frontage:** Ocean, Sandy Beach, Waterfront **Pool:** **Zoning:** 12 - A-2 Medium Density Apartme **Sale Conditions:** None **Schools:** , , \* [Request Showing](#), [Photos](#), [History](#), [Maps](#), [Deed](#), [Watch List](#), [Tax Info](#)

DOM = Days on Market