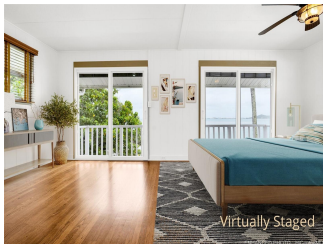
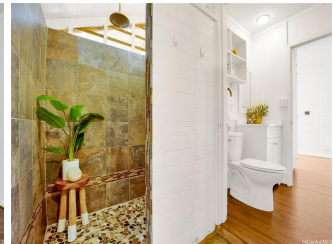


45-005 Likeke Place, Kaneohe 96744 * \$2,720,000

Beds: 6	MLS#: 202408407, FS	Year Built: 1950
Bath: 5/0	Status: Active Under Contract	Remodeled:
Living Sq. Ft.: 3,423	List Date & DOM: 04-17-2024 & 20	Total Parking: 4
Land Sq. Ft.: 9,060	Condition: Above Average	Assessed Value
Lanai Sq. Ft.: 219	Frontage: Ocean, Waterfront	Building: \$237,300
Sq. Ft. Other: 0	Tax/Year: \$507/2024	Land: \$1,621,800
Total Sq. Ft. 3,642	Neighborhood: Kokokahi	Total: \$1,859,100
Maint./Assoc. \$0 / \$0	Flood Zone : Zone X - Tool	Stories / CPR: Two / No
Parking: 3 Car+, Carport, Driveway	Frontage: Ocean, Waterfront	
Zoning : 05 - R-5 Residential District	View: Mountain, Ocean, Sunset	

Public Remarks: Welcome to your waterfront paradise on Kaneohe Bay! With 3 separate dwellings and plenty of parking, this unique property offers a harmonious blend of natural beauty and functional luxury. The main house boasts 3 bedrooms, 2 full baths, an attached guest cabin (2 bed, 1 bath) plus a flex office space. Two detached 1 bedroom units offer versatile living or rental income options. The pier provides direct access to the bay for you to explore with SUPs, kayaks, or boats. Custom upgrades add character to this home. A redwood deck crafted using wood repurposed from San Diego Yacht Club provides an inviting gathering space outside. Inside, a custom mango wood bar adds warmth and charm to the kitchen. Unique touches, such as a light fixture imported from Nantucket and a brass porthole in the guest cabin, reflect the home's coastal ambiance. The large fully fenced grassy lawn offers ample room for entertaining or pets. A thriving garden surrounds the home, complete with a mature avocado tree, papaya, lime, ti plants, and rosemary. Protected by the geographic features of Kaneohe Bay, this waterfront retreat is shielded from flooding and erosion, ensuring peace of mind for years to come. **Sale Conditions:** None **Schools:** [Puohala](#), [King](#), [Castle](#) * [Request Showing](#), [Photos](#), [History](#), [Maps](#), [Deed](#), [Watch List](#), [Tax Info](#)





Address	Price	Bd & Bth	Living / Avg.	Land Avg.	DOM
45-005 Likeke Place	\$2,720,000	6 & 5/0	3,423 \$795	9,060 \$300	20

Address	Tax Maint. Ass.	Assessed Land	Assessed Building	Assessed Total	Ratio	Year & Remodeled
45-005 Likeke Place	\$507 \$0 \$0	\$1,621,800	\$237,300	\$1,859,100	146%	1950 & NA

[45-005 Likeke Place](#) - MLS#: [202408407](#) - Welcome to your waterfront paradise on Kaneohe Bay! With 3 separate dwellings and plenty of parking, this unique property offers a harmonious blend of natural beauty and functional luxury. The main house boasts 3 bedrooms, 2 full baths, an attached guest cabin (2 bed, 1 bath) plus a flex office space. Two detached 1 bedroom units offer versatile living or rental income options. The pier provides direct access to the bay for you to explore with SUPs, kayaks, or boats. Custom upgrades add character to this home. A redwood deck crafted using wood repurposed from San Diego Yacht Club provides an inviting gathering space outside. Inside, a custom mango wood bar adds warmth and charm to the kitchen. Unique touches, such as a light fixture imported from Nantucket and a brass porthole in the guest cabin, reflect the home's coastal ambiance. The large fully fenced grassy lawn offers ample room for entertaining or pets. A thriving garden surrounds the home, complete with a mature avocado tree, papaya, lime, ti plants, and rosemary. Protected by the geographic features of Kaneohe Bay, this waterfront retreat is shielded from flooding and erosion, ensuring peace of mind for years to come. **Region:** Kaneohe **Neighborhood:** Kokokahi **Condition:** Above Average **Parking:** 3 Car+, Carport, Driveway **Total Parking:** 4 **View:** Mountain, Ocean, Sunset **Frontage:** Ocean, Waterfront **Pool:** None **Zoning:** 05 - R-5 Residential District **Sale Conditions:** None **Schools:** [Puohala](#), [King](#), [Castle](#) * [Request Showing](#), [Photos](#), [History](#), [Maps](#), [Deed](#), [Watch List](#), [Tax Info](#)

DOM = Days on Market