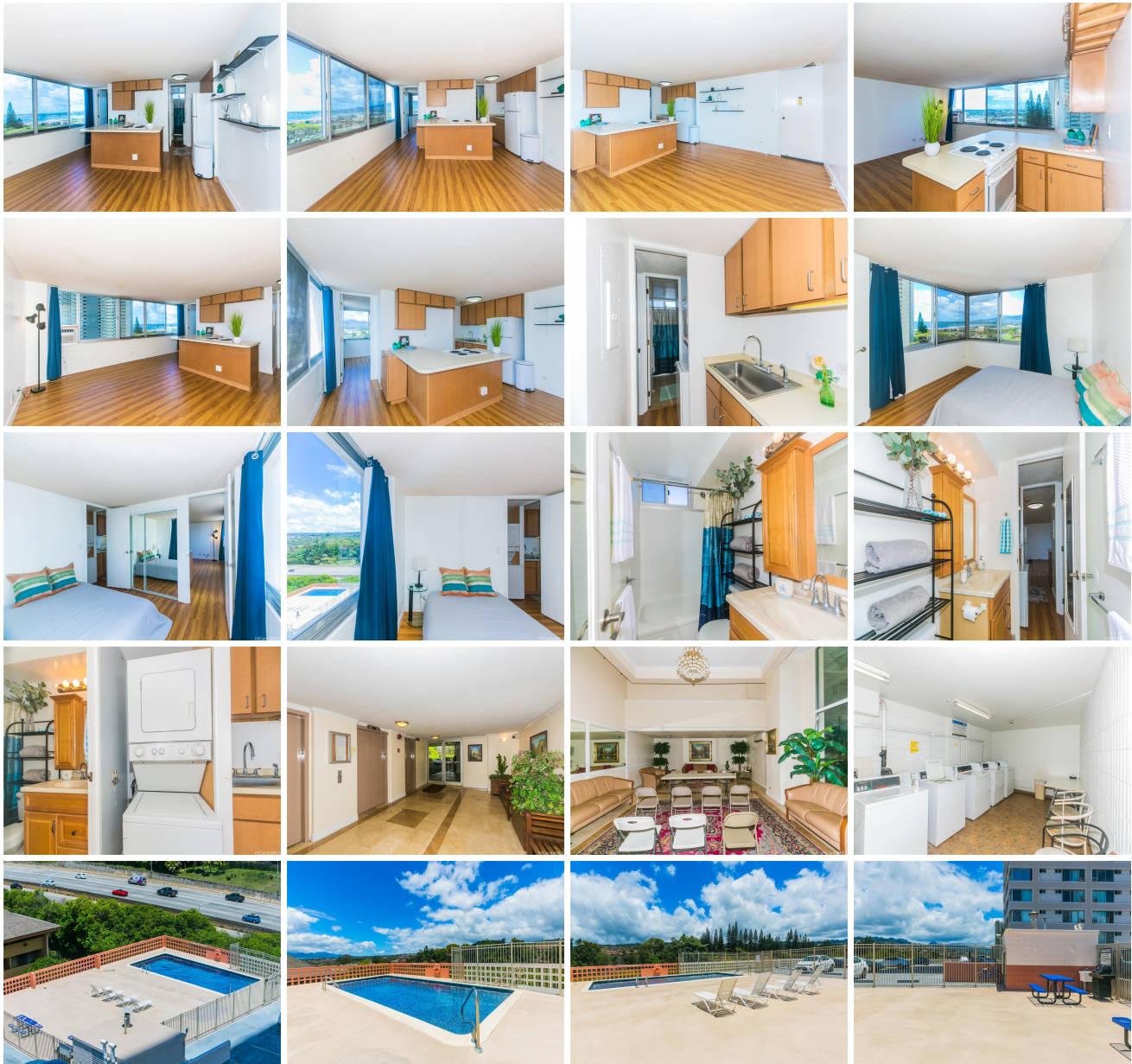
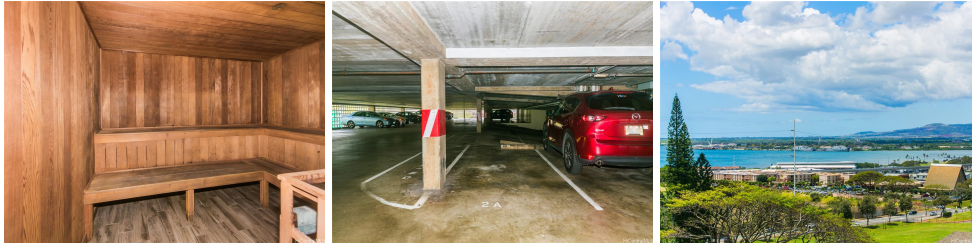


**Pearlridge Square 98-288 Kaonohi Street Unit 802, Aiea 96701 \* \$399,000**

Beds: <b>1</b>	MLS#: <b>202408551, FS</b>	Year Built: <b>1980</b>
Bath: <b>1/0</b>	Status: <b>Active</b>	Remodeled:
Living Sq. Ft.: <b>515</b>	List Date & DOM: <b>04-19-2024 &amp; 29</b>	Total Parking: <b>1</b>
Land Sq. Ft.: <b>50,007</b>	Condition: <b>Above Average</b>	<a href="#">Assessed Value</a>
Lanai Sq. Ft.: <b>0</b>	Frontage:	Building: <b>\$323,900</b>
Sq. Ft. Other: <b>0</b>	Tax/Year: <b>\$102/2024</b>	Land: <b>\$26,200</b>
Total Sq. Ft. <b>515</b>	Neighborhood: <b>Pearlridge</b>	Total: <b>\$350,100</b>
Maint./Assoc. <b>\$504 / \$0</b>	<a href="#">Flood Zone</a> : <b>Zone X - Tool</b>	Stories / CPR: <b>21+ / No</b>
Parking: <b>Assigned, Covered - 1, Guest, Secured Entry, Street</b>	Frontage:	
<a href="#">Zoning</a> : <b>12 - A-2 Medium Density Apartme</b>	View: <b>City, Diamond Head, Mountain, Ocean, Sunset</b>	

**Public Remarks:** This 1 bedroom apartment in Pearlridge Square is a wonderful corner unit with striking views of the Waianae Range, Pearl Harbor & the Koolaus! The sunsets are spectacular too. Great location with super close proximity to Pearlridge Shopping Center, Pearl Harbor-Hickam Joint Base, Honolulu International Airport, dining & entertainment, & Pali Momi & Kaiser Medical Centers. Many recreational opportunities are available in this area. Pearlridge Square is a well managed complex with congenial on-site staff. Parking is secure with 1 covered, assigned parking stall. In-unit laundry as well access to a common laundry facility. The recreation deck includes an inviting pool, sauna & BBQ area. Lots of guest parking. This is a secured building. Maintenance fees include internet, cable tv, hot water, water, sewer & common area maintenance. This property is great for a first time homebuyer or investor. Easy living for the work week & weekends! Open House 4/21st Sunday 2-5pm. **Sale Conditions:** None **Schools:** [Pearl Ridge](#), [Aiea](#), [Aiea](#) \* [Request Showing](#), [Photos](#), [History](#), [Maps](#), [Deed](#), [Watch List](#), [Tax Info](#)





Address	Price	Bd & Bth	Living / Avg.	Land   Avg.	DOM
<a href="#">98-288 Kaonohi Street 802</a>	<a href="#">\$399,000</a>	1 & 1/0	515   \$775	50,007   \$8	29

Address	Tax   Maint.   Ass.	Assessed Land	Assessed Building	Assessed Total	Ratio	Year & Remodeled
<a href="#">98-288 Kaonohi Street 802</a>	\$102   \$504   \$0	\$26,200	\$323,900	\$350,100	114%	1980 & NA

[98-288 Kaonohi Street 802](#) - MLS#: [202408551](#) - This 1 bedroom apartment in Pearlridge Square is a wonderful corner unit with striking views of the Waianae Range, Pearl Harbor & the Koolaus! The sunsets are spectacular too. Great location with super close proximity to Pearlridge Shopping Center, Pearl Harbor-Hickam Joint Base, Honolulu International Airport, dining & entertainment, & Pali Momi & Kaiser Medical Centers. Many recreational opportunities are available in this area. Pearlridge Square is a well managed complex with congenial on-site staff. Parking is secure with 1 covered, assigned parking stall. In-unit laundry as well access to a common laundry facility. The recreation deck includes an inviting pool, sauna & BBQ area. Lots of guest parking. This is a secured building. Maintenance fees include internet, cable tv, hot water, water, sewer & common area maintenance. This property is great for a first time homebuyer or investor. Easy living for the work week & weekends! Open House 4/21st Sunday 2-5pm. **Region:** Pearl City **Neighborhood:** Pearlridge **Condition:** Above Average **Parking:** Assigned, Covered - 1, Guest, Secured Entry, Street **Total Parking:** 1 **View:** City, Diamond Head, Mountain, Ocean, Sunset **Frontage:** Pool: **Zoning:** 12 - A-2 Medium Density Apartme **Sale Conditions:** None **Schools:** [Pearl Ridge](#), [Aiea](#), [Aiea](#) \* [Request Showing](#), [Photos](#), [History](#), [Maps](#), [Deed](#), [Watch List](#), [Tax Info](#)

DOM = Days on Market