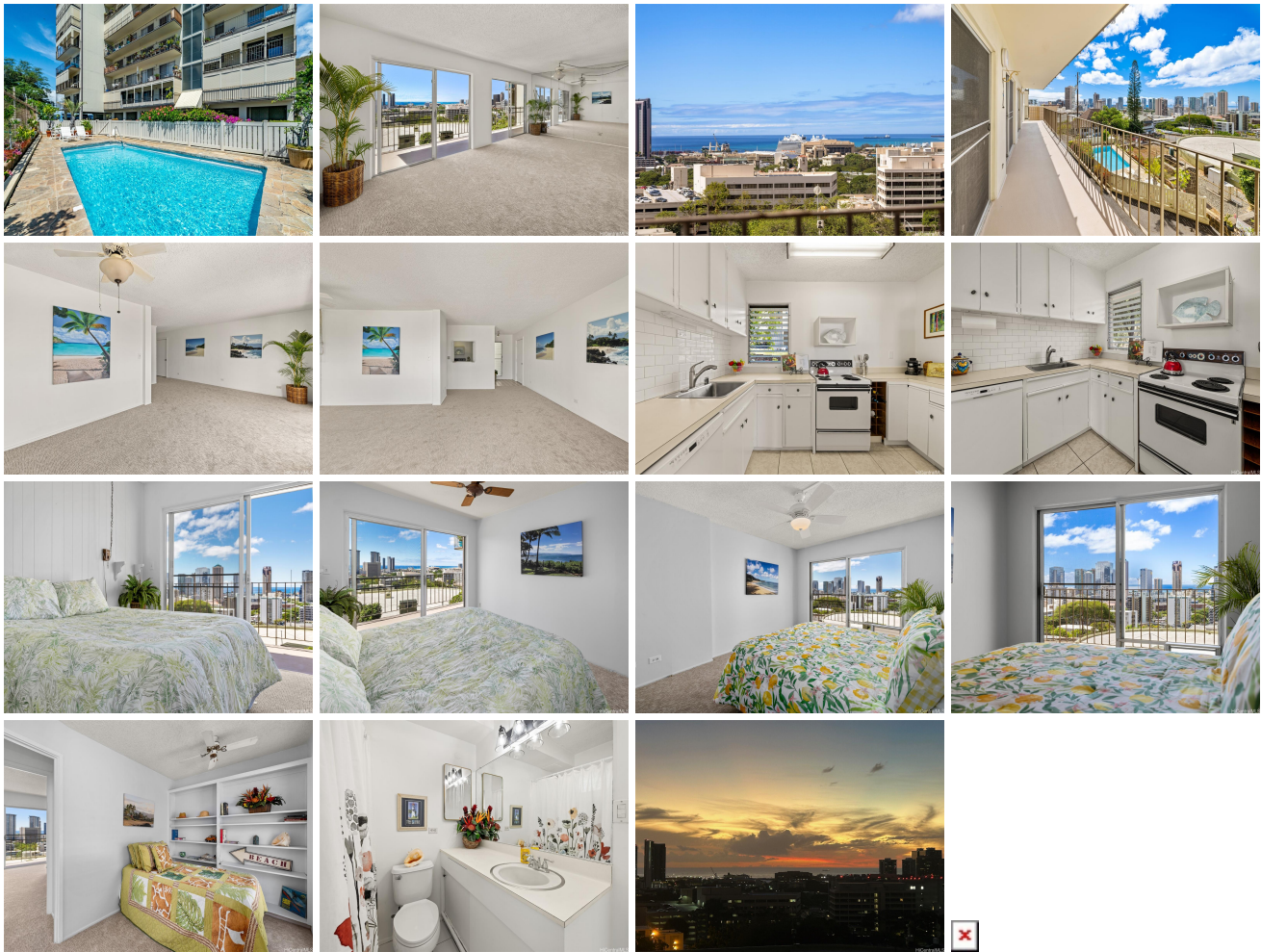


## **Park Tower 625 Iolani Avenue Unit 2023, Honolulu 96813 \* \$589,000**

Beds: <b>3</b>	MLS#: <b>202408586, FS</b>	Year Built: <b>1962</b>
Bath: <b>2/0</b>	Status: <b>Active</b>	Remodeled:
Living Sq. Ft.: <b>1,056</b>	List Date & DOM: <b>04-16-2024 &amp; 31</b>	Total Parking: <b>2</b>
Land Sq. Ft.: <b>11,761</b>	Condition: <b>Average</b>	<a href="#">Assessed Value</a>
Lanai Sq. Ft.: <b>210</b>	Frontage: <b>Other</b>	Building: <b>\$464,800</b>
Sq. Ft. Other: <b>0</b>	Tax/Year: <b>\$109/2024</b>	Land: <b>\$114,100</b>
Total Sq. Ft. <b>1,266</b>	Neighborhood: <b>Punchbowl-lower</b>	Total: <b>\$578,900</b>
Maint./Assoc. <b>\$962 / \$0</b>	<a href="#">Flood Zone</a> : <b>Zone X - Tool</b>	Stories / CPR: <b>8-14 / No</b>
Parking: <b>Open - 2</b>	Frontage: <b>Other</b>	
<a href="#">Zoning</a> : <b>12 - A-2 Medium Density Apartme</b>	View: <b>Ocean, Sunset</b>	

**Public Remarks:** Bright & cheery 3 bedroom 2 bath 2 parking located on a bluff overlooking the Honolulu Skyline offering Sunset and ocean views from not just the lanai but from most of the home. Extra large lanai runs the length of the unit so plenty of outdoor space for table, chairs and plants, any green thumbs out there?! Get healthy by walking or biking to work or just down Ward Avenue, the beach. If you are looking for a spacious feeling unit with views and centrally located by much of Honolulu you found it. Seller with an acceptable offer may credit buyer at closing the amount equal up to one years HOA fee's. Come see today, EZ to view **Sale Conditions:** None **Schools:** , , \* [Request Showing](#), [Photos](#), [History](#), [Maps](#), [Deed](#), [Watch List](#), [Tax Info](#)



Address	Price	Bd & Bth	Living / Avg.	Land   Avg.	DOM
<a href="#">625 Iolani Avenue 2023</a>	<a href="#">\$589,000</a>	3 & 2/0	1,056   \$558	11,761   \$50	31

Address	Tax   Maint.   Ass.	Assessed Land	Assessed Building	Assessed Total	Ratio	Year & Remodeled
<a href="#">625 Iolani Avenue 2023</a>	\$109   \$962   \$0	\$114,100	\$464,800	\$578,900	102%	1962 & NA

[625 Iolani Avenue 2023](#) - MLS#: [202408586](#) - Bright & cheery 3 bedroom 2 bath 2 parking located on a bluff overlooking the Honolulu Skyline offering Sunset and ocean views from not just the lanai but from most of the home. Extra large lanai runs the length of the unit so plenty of outdoor space for table, chairs and plants, any green thumbs out there?! Get healthy by walking or biking to work or just down Ward Avenue, the beach. If you are looking for a spacious feeling unit with views and centrally located by much of Honolulu you found it. Seller with an acceptable offer may credit buyer at closing the amount equal up to one years HOA fee's. Come see today, EZ to view **Region:** Metro **Neighborhood:** Punchbowl-lower **Condition:** Average **Parking:** Open - 2 **Total Parking:** 2 **View:** Ocean, Sunset **Frontage:** Other **Pool:** **Zoning:** 12 - A-2 Medium Density Apartme **Sale Conditions:** None **Schools:** , , \* [Request Showing](#), [Photos](#), [History](#), [Maps](#), [Deed](#), [Watch List](#), [Tax Info](#)

DOM = Days on Market