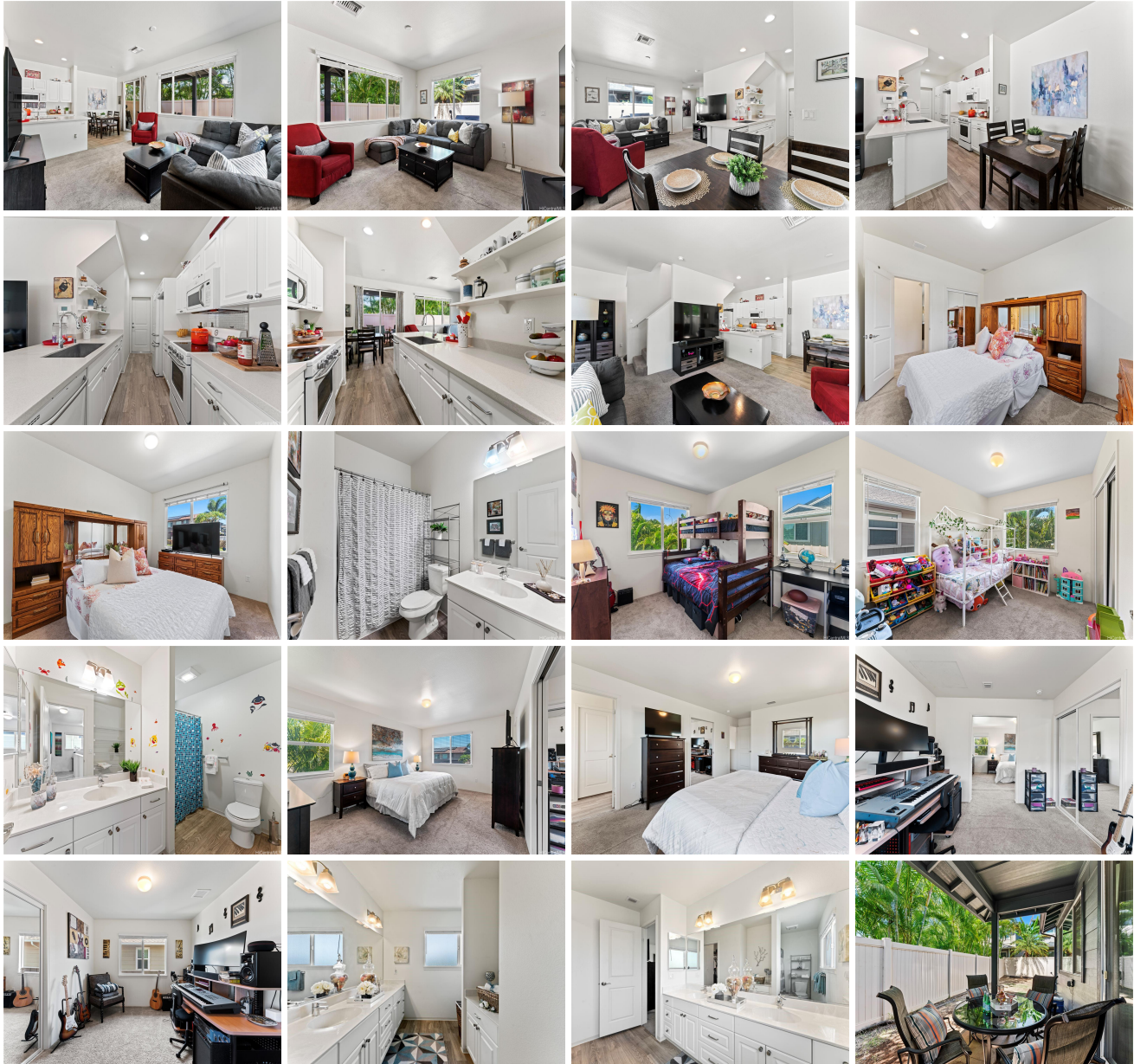


91-6221 Kapolei Parkway Unit 430, Ewa Beach 96706 * \$950,000

Beds: 4	MLS#: 202408917, FS	Year Built: 2014
Bath: 3/0	Status: Pending	Remodeled:
Living Sq. Ft.: 1,720	List Date & DOM: 04-24-2024 & 10	Total Parking: 2
Land Sq. Ft.: 3,752	Condition: Above Average, Average	Assessed Value
Lanai Sq. Ft.: 0	Frontage:	Building: \$401,600
Sq. Ft. Other: 0	Tax/Year: \$242/2024	Land: \$493,500
Total Sq. Ft. 1,720	Neighborhood: Ewa Gen Parkside	Total: \$895,100
Maint./Assoc. \$390 / \$42	Flood Zone : Zone D - Tool	Stories / CPR: Two / Yes
Parking: 3 Car+, Garage	Frontage:	
Zoning : 11 - A-1 Low Density Apartment	View: None	

Public Remarks: Who needs new, when you can have it ALL! Large floor plan, Central A/C, full bed/bath downstairs, deluxe primary retreat, fenced in yard, 3+ car parking & owned solar panels w/ Tesla battery! Picture coming home to a refreshing sanctuary, free from the worry of high electricity bills after a long day's work. This 2-story home boasts an abundance of natural light and features an open-concept living area that seamlessly flows into the dining and kitchen spaces. The kitchen is a chef's dream, equipped with ample cabinet storage, Corian counters, and 2 convenient pantries. Upstairs, you'll find 3 of the 4 bedrooms, including a generously sized primary retreat with a walk-in closet, en-suite, and a private extension perfect for an office or nursery. Your new home and community is very conveniently located! The home is just steps away from the community pool & on a corner lot right next to plenty of visitor parking. The neighborhood is in close proximity to both a middle & elementary schools, the brand new Wai Kai Wave Park, Ka Makana Alii Shopping Center, restaurants, medical center, golf courses and much more. Call your Realtor & schedule your private showing today! **Sale Conditions:** None

Schools: [Keoneula](#), [Ewa Makai](#), [Campbell](#) * [Request Showing](#), [Photos](#), [History](#), [Maps](#), [Deed](#), [Watch List](#), [Tax Info](#)





Address	Price	Bd & Bth	Living / Avg.	Land Avg.	DOM
91-6221 Kapolei Parkway 430	\$950,000	4 & 3/0	1,720 \$552	3,752 \$253	10

Address	Tax Maint. Ass.	Assessed Land	Assessed Building	Assessed Total	Ratio	Year & Remodeled
91-6221 Kapolei Parkway 430	\$242 \$390 \$42	\$493,500	\$401,600	\$895,100	106%	2014 & NA

[91-6221 Kapolei Parkway 430](#) - MLS#: [202408917](#) - Who needs new, when you can have it ALL! Large floor plan, Central A/C, full bed/bath downstairs, deluxe primary retreat, fenced in yard, 3+ car parking & owned solar panels w/ Tesla battery! Picture coming home to a refreshing sanctuary, free from the worry of high electricity bills after a long day's work. This 2-story home boasts an abundance of natural light and features an open-concept living area that seamlessly flows into the dining and kitchen spaces. The kitchen is a chef's dream, equipped with ample cabinet storage, Corian counters, and 2 convenient pantries. Upstairs, you'll find 3 of the 4 bedrooms, including a generously sized primary retreat with a walk-in closet, en-suite, and a private extension perfect for an office or nursery. Your new home and community is very conveniently located! The home is just steps away from the community pool & on a corner lot right next to plenty of visitor parking. The neighborhood is in close proximity to both a middle & elementary schools, the brand new Wai Kai Wave Park, Ka Makana Alii Shopping Center, restaurants, medical center, golf courses and much more. Call your Realtor & schedule your private showing today! **Region:** Ewa Plain **Neighborhood:** Ewa Gen Parkside **Condition:** Above Average, Average **Parking:** 3 Car+, Garage **Total Parking:** 2 **View:** None **Frontage:** **Pool:** Pool on Property, Community Association Pool **Zoning:** 11 - A-1 Low Density Apartment **Sale Conditions:** None **Schools:** [Keoneula](#), [Ewa Makai](#), [Campbell](#) * [Request Showing](#), [Photos](#), [History](#), [Maps](#), [Deed](#), [Watch List](#), [Tax Info](#)

DOM = Days on Market