

91-214 Louluhiwa Place, Kapolei 96707 * \$1,235,000

Beds: **4**

MLS#: **202409027, FS**

Year Built: **2001**

Bath: **3/0**

Status: **Active Under Contract**

Remodeled:

Living Sq. Ft.: **2,036**

List Date & DOM: **04-26-2024 & 11**

Total Parking: **6**

Land Sq. Ft.: **5,000**

Condition: **Excellent**

[Assessed Value](#)

Lanai Sq. Ft.: **0**

Frontage:

Building: **\$518,100**

Sq. Ft. Other: **0**

Tax/Year: **\$296/2023**

Land: **\$625,000**

Total Sq. Ft. **2,036**

Neighborhood: **Kapolei Knolls**

Total: **\$1,168,100**

Maint./Assoc. **\$0 / \$65**

[Flood Zone:](#) **Zone D - Tool**

Stories / CPR: **Two / No**

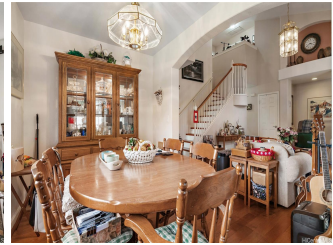
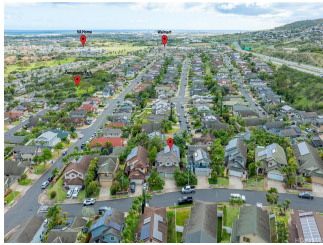
Parking: **3 Car+, Driveway, Garage, Street**

Frontage:

[Zoning:](#) **05 - R-5 Residential District**

View: **City, Coastline, Diamond Head, Garden, Mountain, Ocean, Sunrise, Sunset**

Public Remarks: THIS IS THE ONE! Discover the epitome of luxury island living in the highly sought-after community of KAPOLEI KNOLLS. Marvel at DIAMOND HEAD and OCEAN VIEWS from the comfort of your own home. Enjoy ample storage space provided by the EXPANSIVE 3-CAR GARAGE. Entertain in style with a spacious lanai and FULLY EQUIPPED OUTDOOR KITCHEN, complete with a gas grill, Blackstone flat griddle, outdoor gas stove, and more, making it easy to host gatherings. Your guests will have plenty of parking options on a cul-de-sac street. Escape to your METICULOUSLY LANDSCAPED YARD featuring a serene fish pond and avocado / calamansi trees, creating a peaceful oasis to relax and unwind. Benefit from 25 TESLA PV PANELS w/ WARRANTY ON NEM, offering eco-friendly power and reducing your energy costs. Take advantage of the inclusion of outdoor kitchen appliances, portable AC units, a surround sound system, various furniture items, ensuring a seamless transition into your new home. Enjoy convenient access to freeways, rail/bus stations, shopping, military bases, schools and parks. This won't be on the market long, so schedule a tour now! **Sale Conditions:** None **Schools:** [Kapolei, Kapolei, Kapolei](#) * [Request Showing, Photos, History, Maps, Deed, Watch List, Tax Info](#)





Address	Price	Bd & Bth	Living / Avg.	Land Avg.	DOM
91-214 Louluhiwa Place	\$1,235,000	4 & 3/0	2,036 \$607	5,000 \$247	11

Address	Tax Maint. Ass.	Assessed Land	Assessed Building	Assessed Total	Ratio	Year & Remodeled
91-214 Louluhiwa Place	\$296 \$0 \$65	\$625,000	\$518,100	\$1,168,100	106%	2001 & NA

[91-214 Louluhiwa Place](#) - MLS#: [202409027](#) - THIS IS THE ONE! Discover the epitome of luxury island living in the highly sought-after community of KAPOLEI KNOLLS. Marvel at DIAMOND HEAD and OCEAN VIEWS from the comfort of your own home. Enjoy ample storage space provided by the EXPANSIVE 3-CAR GARAGE. Entertain in style with a spacious lanai and FULLY EQUIPPED OUTDOOR KITCHEN, complete with a gas grill, Blackstone flat griddle, outdoor gas stove, and more, making it easy to host gatherings. Your guests will have plenty of parking options on a cul-de-sac street. Escape to your METICULOUSLY LANDSCAPED YARD featuring a serene fish pond and avocado / calamansi trees, creating a peaceful oasis to relax and unwind. Benefit from 25 TESLA PV PANELS w/ WARRANTY ON NEM, offering eco-friendly power and reducing your energy costs. Take advantage of the inclusion of outdoor kitchen appliances, portable AC units, a surround sound system, various furniture items, ensuring a seamless transition into your new home. Enjoy convenient access to freeways, rail/bus stations, shopping, military bases, schools and parks. This won't be on the market long, so schedule a tour now! **Region:** Ewa Plain **Neighborhood:** Kapolei Knolls **Condition:** Excellent **Parking:** 3 Car+, Driveway, Garage, Street **Total Parking:** 6 **View:** City, Coastline, Diamond Head, Garden, Mountain, Ocean, Sunrise, Sunset **Frontage:** **Pool:** None **Zoning:** 05 - R-5 Residential District **Sale Conditions:** None **Schools:** [Kapolei](#), [Kapolei](#), [Kapolei](#) * [Request Showing](#), [Photos](#), [History](#), [Maps](#), [Deed](#), [Watch List](#), [Tax Info](#)

DOM = Days on Market