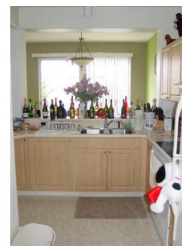
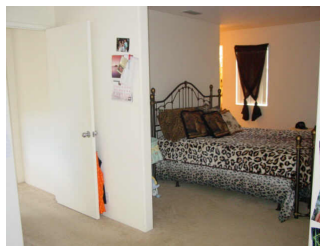


Terrazza 912021 Luahoana Street Unit 83, Ewa Beach 96706 * \$385,000

Sold Price: \$375,000	Sold Date: 11-26-2004	Sold Ratio: 97%
Beds: 4	MLS#: 2414976, FS	Year Built: 2002
Bath: 2/1	Status: Sold	Remodeled:
Living Sq. Ft.: 1,498	List Date & DOM: 09-17-2004 & 23	Total Parking: 0
Land Sq. Ft.: 0	Condition: Above Average	Assessed Value
Lanai Sq. Ft.: 30	Frontage:	Building: \$170,500
Sq. Ft. Other: 0	Tax/Year: \$66/2003	Land: \$78,300
Total Sq. Ft. 1,528	Neighborhood: Ewa Gen Terrazza	Total: \$248,800
Maint./Assoc. \$240 / \$0	Flood Zone : Zone X - Tool	Stories / CPR: Two / Yes
Parking: 3 Car+, Driveway, Garage	Frontage:	
Zoning : 11 - A-1 Low Density Apartment	View: None	

Public Remarks: The master bdrm in this spacious home has been converted so that it has an attached office/nursery! It's beautiful! Community pool, central AC, 2 car garage w/ auto door openers, ceiling fan, washer/dryer, plenty of guest parking directly in front of home, and right across the street from the community park. Located on a small private side street with no drive-thru traffic. Bring your offers now! **Sale Conditions:** Schools: [Holomua](#), [Ilima](#), [Campbell](#) * [Request Showing](#), [Photos](#), [History](#), [Maps](#), [Deed](#), [Watch List](#), [Tax Info](#)



Address	Price	Bd & Bth	Living / Avg.	Land Avg.	DOM
912021 Luahoana Street 83	\$385,000	4 & 2/1	1,498 \$257	0 \$inf	23

Address	Tax Maint. Ass.	Assessed Land	Assessed Building	Assessed Total	Ratio	Year & Remodeled
912021 Luahoana Street 83	\$66 \$240 \$0	\$78,300	\$170,500	\$248,800	155%	2002 & NA

Address	Sold Price	Sold Date	Sold Ratio	Original Ratio	Sold Terms
912021 Luahoana Street 83	\$375,000	11-26-2004	97%	97%	Conventional

[912021 Luahoana Street 83](#) - MLS#: [2414976](#) - The master bdrm in this spacious home has been converted so that it has an attached office/nursery! It's beautiful! Community pool, central AC, 2 car garage w/ auto door openers, ceiling fan, washer/dryer, plenty of guest parking directly in front of home, and right across the street from the community park. Located on a small private side street with no drive-thru traffic. Bring your offers now! **Region:** Ewa Plain **Neighborhood:** Ewa Gen Terrazza **Condition:** Above Average **Parking:** 3 Car+, Driveway, Garage **Total Parking:** 0 **View:** None **Frontage:** Pool: Heated **Zoning:** 11 - A-1 Low Density Apartment **Sale Conditions:** Schools: [Holomua](#), [Ilima](#), [Campbell](#) * [Request Showing](#), [Photos](#), [History](#), [Maps](#), [Deed](#), [Watch List](#), [Tax Info](#)

DOM = Days on Market